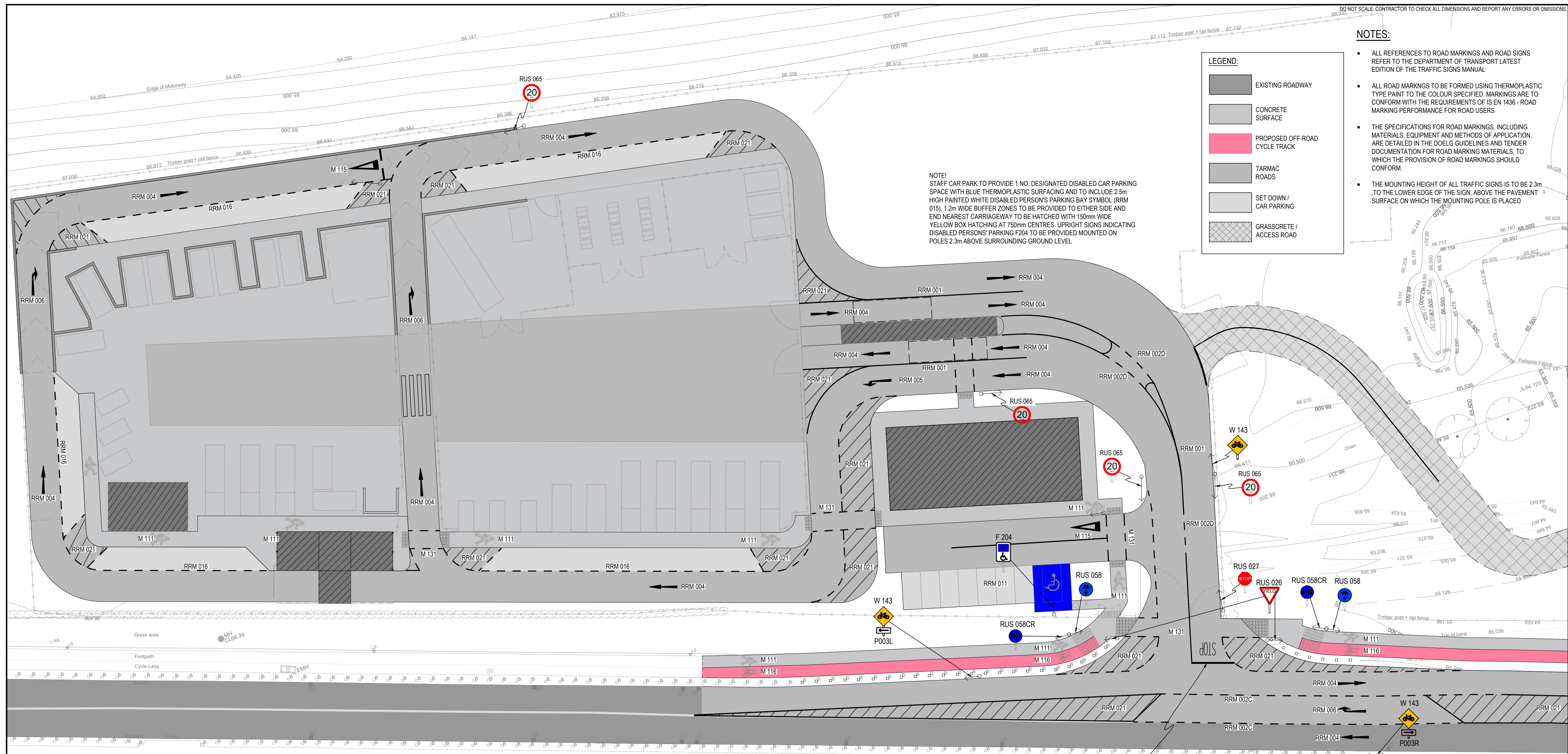


DO NOT SCALE. CONTRACTOR TO CHECK ALL DIMENSIONS AND REPORT ANY ERRORS OR OMISSIONS



- NOTES:**
- ALL REFERENCES TO ROAD MARKINGS AND ROAD SIGNS REFER TO THE DEPARTMENT OF TRANSPORT LATEST EDITION OF THE TRAFFIC SIGNS MANUAL
  - ALL ROAD MARKINGS TO BE FORMED USING THERMOPLASTIC TYPE PAINT TO THE COLOUR SPECIFIED. MARKINGS ARE TO CONFORM WITH THE REQUIREMENTS OF IS EN 1436 - ROAD MARKING PERFORMANCE FOR ROAD USERS
  - THE SPECIFICATIONS FOR ROAD MARKINGS, INCLUDING MATERIALS, EQUIPMENT AND METHODS OF APPLICATION, ARE DETAILED IN THE DOELG GUIDELINES AND TENDER DOCUMENTATION FOR ROAD MARKING MATERIALS, TO WHICH THE PROVISION OF ROAD MARKINGS SHOULD CONFORM.
  - THE MOUNTING HEIGHT OF ALL TRAFFIC SIGNS IS TO BE 2.3m TO THE LOWER EDGE OF THE SIGN, ABOVE THE PAVEMENT SURFACE ON WHICH THE MOUNTING POLE IS PLACED

**NOTE!**  
STAFF CAR PARK TO PROVIDE 1 NO. DESIGNATED DISABLED CAR PARKING SPACE WITH BLUE THERMOPLASTIC SURFACING AND TO INCLUDE 2.5m HIGH PAINTED WHITE DISABLED PERSONS PARKING BAY SYMBOL (RRM 015). 1.2m WIDE BUFFER ZONES TO BE PROVIDED TO EITHER SIDE AND END NEAREST CARRIAGEWAY TO BE HATCHED WITH 150mm WIDE YELLOW BOX HATCHING AT 750mm CENTRES. UPRIGHT SIGNS INDICATING DISABLED PERSONS' PARKING F204 TO BE PROVIDED MOUNTED ON POLES 2.3m ABOVE SURROUNDING GROUND LEVEL

**PROPOSED ROAD MARKINGS - SHEET 1 OF 2**  
SCALE 1:250

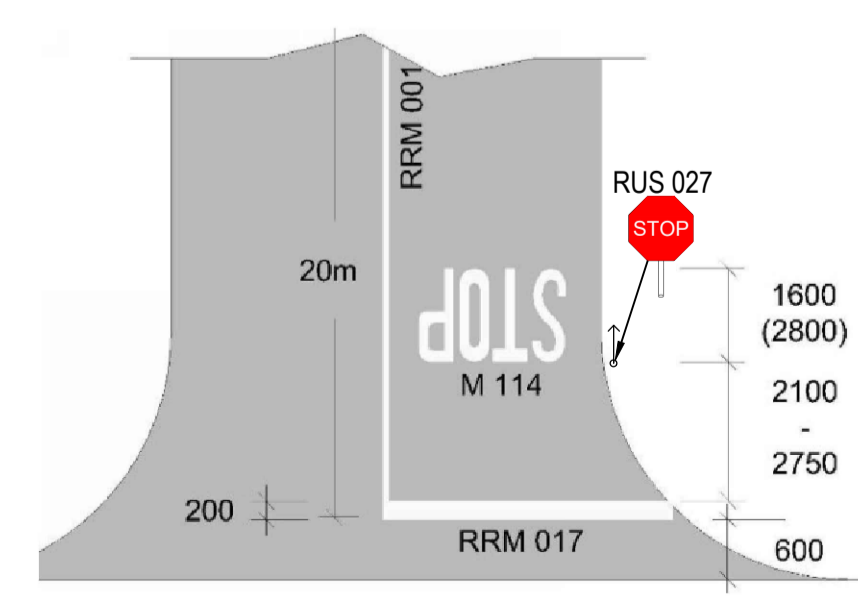
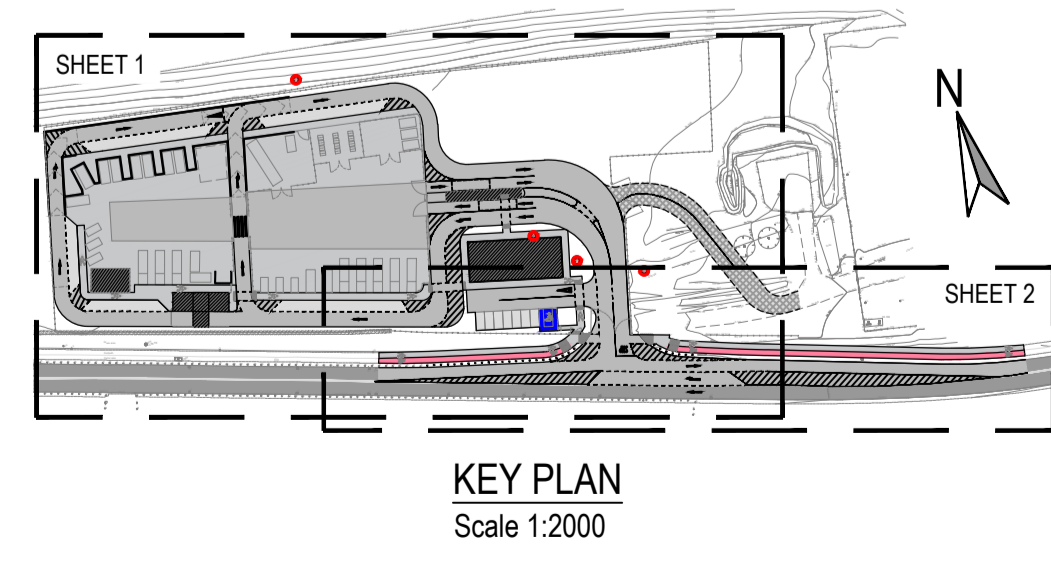
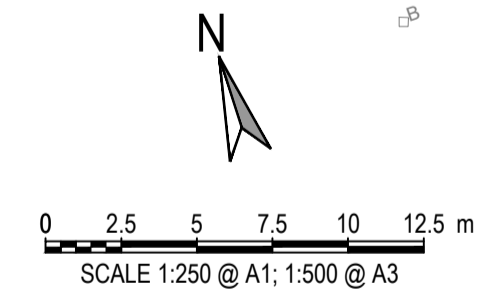


Figure 7.35: Example of Priority-Controlled Stop Junction  
Note: See Paragraph 7.11.2

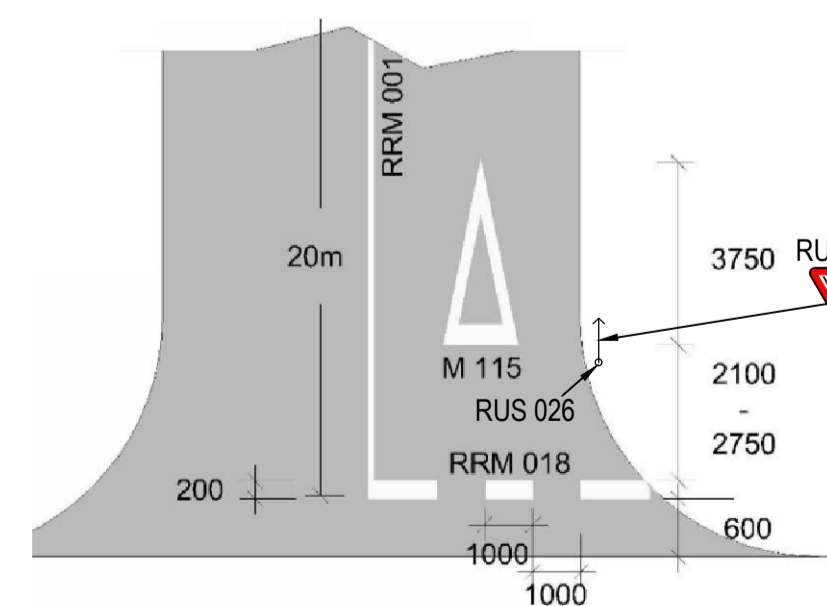


Figure 7.36: Example of Priority-Controlled Yield Junction  
Note: See Paragraph 7.11.2

**TYPICAL JUNCTION DETAILS (FROM TRAFFIC SIGNS MANUAL)**  
SCALE (NTS)

**TABLE OF ROAD MARKINGS**

SIGN NUMBER	DESCRIPTION	NOTES
RRM 001	CONTINUOUS SINGLE CENTRE LINE	WHITE, CONTINUOUS LINE, 100mm WIDE
RRM 002C	CENTRE WARNING LINE	WHITE, 4m LINE, 2m GAP, 150mm WIDE
RRM 002D	CENTRE WARNING LINE	WHITE, 3m LINE, 1m GAP, 100mm WIDE
RRM 004	DIRECTIONAL ARROW - STRAIGHT AHEAD	WHITE
RRM 005	DIRECTIONAL ARROW - LEFT	WHITE
RRM 006	DIRECTIONAL ARROW - RIGHT	WHITE
RRM 016	PARKING BAYS - UNSEGREGATED	WHITE, CONTINUOUS LINE, 50mm WIDE
RRM 017	STOP LINE	WHITE, CONTINUOUS LINE, 200mm WIDE
RRM 018	YIELD LINE	WHITE, 500mm LINE, 500mm GAP, 200mm WIDE
RRM 021	HATCH MARKING	WHITE, 2m APART (DIAGONAL), 150mm WIDE
RRM 022	EDGE OF CYCLE TRACK	WHITE, CONTINUOUS LINE, 100mm WIDE
M 111	PEDESTRIAN MARKING	WHITE
M 114	STOP WORDED MARKING	WHITE, 1.6m LONG LETTERING
M 115	TRIANGULAR YIELD MARKING	WHITE, 3.75m LONG
M 116	CYCLE PATH MARKING	WHITE
M 131	PEDESTRIAN LINE	WHITE, CONTINUOUS LINE, 100mm WIDE, 2m APART

NOTE:  
ALL ROAD MARKINGS TO BE IN ACCORDANCE WITH THE DEPARTMENT OF TRANSPORT TRAFFIC SIGNS MANUAL CHAPTER 7 - ROAD MARKINGS

**TABLE OF ROAD SIGNS**

SIGN NUMBER	DESCRIPTION	NOTES
RUS 026	YIELD	600mm WIDE SIGN
RUS 027	STOP	600mm WIDE SIGN
RUS 058CR	SEGREGATED CYCLE & PEDESTRIAN ROUTE (CYCLE ON RIGHT)	600mm WIDE SIGN
RUS 058	SHARED TRACK CYCLE/PEDESTRIAN	600mm WIDE SIGN
RUS 065	SPEED LIMIT SIGN, 20 KM/H	600mm WIDE SIGN
W143	CYCLE LANE CROSSING AHEAD	600mm WIDE SIGN
P003L OR R	WARNING AHEAD LEFT OR RIGHT	500mm LONG SIGN
F 204	DISABLED PARKING BAY	

**ISSUED FOR PLANNING**

Rev.	Note	Date	Drawn	Check
S2.P03	ISSUED FOR PLANNING	22.02.2019	KD	PD
S2.P02	ISSUED FOR INFORMATION	17.12.2018	KD	PD
S2.P01	ISSUED FOR INFORMATION	05.11.2018	KD	PD

**DONNACHADH O'BRIEN & ASSOCIATES CONSULTING ENGINEERS**

UNIT 5C  
ELM HOUSE  
MILLENNIUM PARK  
NAAS  
CO. KILDARE

PHONE  
+353 45 984 042

INFO@DOBRIEN-ENGINEERS.IE  
WWW.DOBRIEN-ENGINEERS.IE

Client: **KILDARE COUNTY COUNCIL**  
Comhairle Chontae Chill Dara  
MR. JOE BOLAND, DIRECTOR OF SERVICES  
WATER SERVICES & ENVIRONMENT

Project: **PROPOSED CIVIC AMENITY CENTRE & WASTE TRANSFER FACILITY AT KILMACREDDOCK UPPER, CASTLETOWN, CELBRIDGE, Co. KILDARE**

Drawing Title: **PROPOSED ROAD MARKINGS SHEET 1 OF 2**

Drawn By: KD	Checked By: PD	Approved By: DOB	Date: FEB' 2017	Scale: 1:250	Sheet Size: A1
Project Number: DOBA1701	Drawing Number: CIVAMY-DOB-XX-SI-DR-C-0060	Status Code: S2	Rev Number: P03		