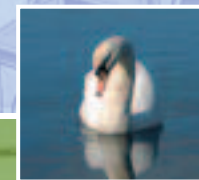
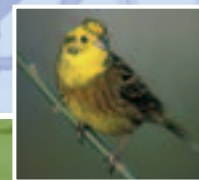
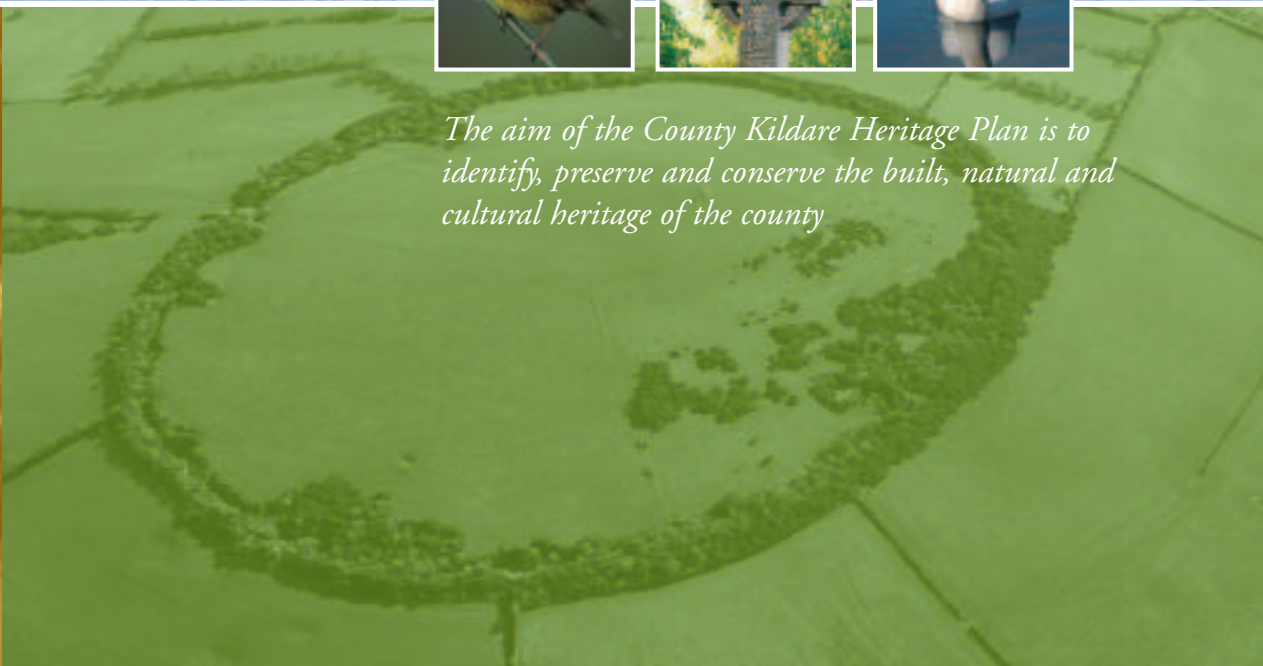


# COUNTY KILDARE HERITAGE PLAN 2005

A partnership plan, prepared by the County Council Heritage Forum



*The aim of the County Kildare Heritage Plan is to identify, preserve and conserve the built, natural and cultural heritage of the county*



**Kildare County Council** and the **County Kildare Heritage Forum** wish to acknowledge the role of **The Heritage Council** in initiating the **County Kildare Heritage Plan** in association with **Kildare County Council**.

In particular, the Forum acknowledges the support of **The Heritage Council** through its funding of the Heritage Officer post, in association with **Kildare County Council**



SUPPORTED BY THE HERITAGE COUNCIL



LE CUIDIÚ AN CHOMHAIRLE OIDHREACHTA

## ACKNOWLEDGEMENTS

Proof reading: Mr Michael Kavanagh, Mary Foley  
Photographs: Conor Kellegher, Phil Richardson, Catherine Casey,  
Lorcan Scott, Peter Black, NIAH, Ted Keane, Mario Corrigan,  
Patrick Donald, NIAH, Eamon Kane, Eddie Dunne.

*For further information please contact: Heritage Officer, Kildare County Council, St Mary's, Naas, Co. Kildare, Tel: 045 873829, Email: [heritageofficer@kildarecoco.ie](mailto:heritageofficer@kildarecoco.ie)* © County Kildare Heritage Forum



## CONTENTS

1. Foreword .....	3
2. Introduction .....	6
3. Objectives and Actions .....	10
4. Statement of Strategy .....	22

## APPENDICES

1. The Formulation of the Heritage Plan .....	24
2. Membership of the County Kildare Heritage Forum & associated Working Groups .....	28
3. Public Consultation .....	32
4. Relevant Heritage Legislation .....	36



# FOREWORD

*Cllr. Billy Hillis - Mayor of County Kildare*



As Mayor of County Kildare I am pleased to welcome this, the first County Kildare Heritage Plan. Kildare is a county with a vast wealth of natural, built, cultural and archaeological heritage of which we are justifiably proud. In the last decade Kildare has undergone many changes and there is always the challenge of balancing the

development of the county with a desire to protect and enhance our heritage stock.

This plan, developed by the County Kildare Heritage Forum following extensive public consultation, establishes a coherent strategy for the future management of heritage in the county. The implementation of this plan relies on all stakeholders working in partnership to achieve a common aim to identify, preserve and conserve the built, natural and cultural heritage of the county.

Within this county there are many individuals and groups, which are dedicated to caring for and managing out heritage. This plan strives to support and co-ordinate the work of these people.

I wish the Heritage Plan every success in its stated objectives over the next five years.



*Mr Niall Bradley - County Manager*



Kildare is a county rich in Heritage many aspects of which are unique such as the Curragh, Pollardstown Fen, Carton House in Maynooth and the High Cross at Moone. Heritage is more than just buildings, rivers, trees, landscape and archaeological sites alone. It is the interrelationship between all these elements and their relationship with citizens. The

Heritage of an area is what makes it unique, what gives it a character all its own and what defines its "sense of place". Some aspects of the Heritage of Kildare are important in their own locality and some are of national or international importance, protected by legislation. Whatever their inherent importance, all aspects of heritage serve to enhance the quality of life for all who live or are associated with County Kildare

The development of the first County Kildare Heritage Plan, represents a new approach to the management and protection of our local Heritage. This plan was drafted by County Kildare Heritage Forum and co-ordinated by Kildare County Council.

The Plan provides a strategic framework for the management of Heritage in the County, be setting out objectives and actions for the management and protection of our heritage for the next five years.

I take this opportunity to wish the Kildare Heritage Forum and the plan every success it its implementation.

*Mr Paul Croghan - Chairperson of County Kildare Heritage Forum*



As Chairperson of the County Kildare Heritage Forum, I am proud to be associated with the first Heritage Plan for County Kildare. Since the formation of the County Kildare Heritage Forum in 2003 an enormous amount of work has been achieved. The County Kildare Heritage Plan is the outcome of a process involving the community, heritage groups, the farming community,

the business and state sectors and the professional staff and elected members of the Kildare Local Authorities. The County Kildare Heritage Forum brings together the key bodies with an interest in protecting our heritage and the objectives and actions outlined in the plan will be implemented by the forum with the support of the Heritage Council and Kildare Local Authorities over the next five years.

The County Kildare Heritage Plan is a working document and it provides for the first time a strategic framework for the integration of Kildare's Built, Natural and Cultural heritage in overall policy for the future development of our county. The publication of the plan is the culmination of an extensive public consultation process and as Chairperson of the County Kildare Heritage Forum, I hope that it will help to raise awareness of and pride in the unique heritage of County Kildare. I would like to thank everyone that made submissions on the plan to the forum.

I would like to thank the members of the forum for their commitment in completing this plan. I would like to acknowledge the members of the Built, Natural and Cultural Working Groups for their advice and assistance. In particular, on behalf of the County Kildare Heritage Forum, I would like to acknowledge the support of Ms. Bridget Loughlin, Heritage Officer, Kildare County Council for her guidance and encouragement in our task.



## INTRODUCTION

*“The aim of the County Kildare Heritage Plan is to identify, preserve and conserve the built, natural and cultural heritage of the county”*







## 2.0 Introduction

"Heritage is a presence which physically expresses the essence and the heart-beat of collective historical identity." *The National Heritage Plan, April 2002*

The aim of the County Kildare Heritage Plan is to identify, preserve and conserve the built, natural and cultural heritage of the county.

County Kildare is a county rich in heritage, which is expressed in the unique natural sites of the Curragh Plains and Pollardstown Fen, in the monuments representative of all periods from the early pre-Christian sites to the magnificent Palladian mansion of Castletown and its estate village of Celbridge, the peatlands and the rich cultivated landscape of south Kildare.

Heritage is more than just buildings, rivers, trees, landscape and archaeological sites alone. It is the interrelationship between all these elements and their relationship with mankind. The Heritage of an area is what makes it unique, what gives it a character all its own and what defines its "sense of place". Some aspects of the Heritage of Kildare are important in their own locality and some are of national or international importance, protected by legislation. Whatever their inherent importance, all aspects of heritage serve to enhance the quality of life for all who live or are associated with County Kildare and thus contribute to making County Kildare a place people will choose to "live, work, visit, learn and do business". A vision developed in the County Development Board's Strategy for economic, social and cultural development of Kildare- "Kildare 2012" and reflected in the County Council's Corporate Plan.



## 2.1 National Heritage Plan and County Kildare Heritage Plan

Although the heritage of Kildare is continually changing and evolving, it is still a precious, finite resource, which must be protected. The management of heritage must be planned in order to secure its enhancement and conservation. The importance of heritage in terms of its contribution to quality of life, to the tourist economy and the general perception of the Ireland are recognised by the Government in the publication of the National Heritage Plan in April 2002. This plan sets out “ a comprehensive strategy and framework for the protection and management of heritage over the coming five year period”.

The National Heritage Plan recognises the communal nature of heritage and the responsibility we all share in its protection. This plan states that “Protection of our heritage must begin at local level, enabling everybody to become actively involved in preserving and enhancing that which belongs to us.” A key element of the National Heritage Plan is the “preparation and adoption of Local Heritage Plans involving Local Heritage Fora.” These Local Heritage Plans will involve local communities, non-government agencies, local and national government in identifying steps necessary for the protection and enjoyment of heritage at the local level, thus fostering a shared responsibility for heritage.

The Heritage Act of 1995 gives the first “official” definition of Heritage to include:

- |                          |                            |                    |
|--------------------------|----------------------------|--------------------|
| - monuments              | - archaeological objects   | - heritage objects |
| - architectural heritage | - flora                    | - fauna            |
| - wildlife habitats      | - landscapes               | - wrecks           |
| - seascapes              | - heritage gardens & parks | - geology          |
| - inland waterways       |                            |                    |

*The County Kildare Heritage Forum expanded this definition to include local history*

## 2.2 County Kildare Heritage Forum

The County Kildare Heritage Forum<sup>1</sup> has drafted the first County Kildare Heritage Plan. The Forum, an advisory group established by Kildare County Council to assist in the formulation and implementation of the Heritage Plan, is composed of various stakeholders, who have an interest in or who are concerned with heritage management in the County. The County Kildare Heritage Forum represents a coming together, for the first time, of representatives from local government, government departments and agencies, community and voluntary groups, local history groups, the farming community, local development organisations and the education sector, forming a partnership to develop a plan of action for heritage in the County.

The County Kildare Heritage Forum will meet on a regular basis to assist in the implementation of the plan. The Heritage Forum, in agreement with all partners, will propose a detailed programme of costed actions each year and will monitor the implementation of the Plan, over its 5-year time frame.

## 2.3 Guiding Documents and Plans

In preparing the Plan, the County Kildare Heritage Forum took cognisance of other documents, strategies and plans such as the National Heritage Plan, the National Biodiversity Plan, Kildare County Development Plan 1999-2005, the County Development Board Strategy- “Kildare 2012”- An Economic, Social and Cultural Strategy” and Kildare County Council’s Corporate Plan. The appointment of a Heritage Officer and the preparation of a Local Heritage Plan are specifically included as priorities in the County Development Board Strategy.

## 2.4 Public Consultation

The process of drafting the Heritage Plan began with a Heritage Seminar held in

<sup>1</sup> In accordance with an agreed methodology produced by The Heritage Council



Kilcullen Heritage Centre. The purpose of this seminar was begin to expand the perception of heritage and to introduce the concept of the Local Heritage Plan as a mechanism for combining all efforts to manage and protect heritage in the county.

At the inaugural meeting of the Heritage Forum, in September 2003, the aim of the Heritage Plan was agreed. In order to encourage a sense of collective responsibility towards the management of heritage and therefore the Plan, the public were invited to make submissions. In total 60 written submissions were received from individuals and organisations interested in County Kildare's heritage. In addition 9 public meetings were held throughout the County during October 2003. The issues raised in these submissions and at the public meetings informed the Heritage Forum's work in developing the Plan.

## 2.5 Working Groups

In November 2003 the County Kildare Heritage Forum established three working groups, Built, Natural and Archaeological/Cultural, to discuss identified issues, formulate actions and propose partners for the Heritage Plan. The working groups consisted of members of the Heritage Forum and invited expertise, which met a number of times during the plan process. This process is outlined in appendix 1. Membership of the working groups and aspects of heritage discussed in each working group are listed in appendix 2.

All submissions were considered and every effort was made to include the issues raised. However, given the strategic and county-wide nature of this plan it was not possible to include site specific issues.

The County Kildare Heritage Forum acknowledges the work of many organisations, individuals and agencies already taking place within the County. The Heritage Plan seeks to expand on this work by concentrating on local heritage issues. The success of the plan will, however, require a level of commitment from the proposed partners. The preparation of a Local Kildare Heritage Plan signals a new approach to the management of heritage in the County. This approach seeks to further involve local communities in caring for their heritage.

## 2.6 Objectives and Actions Identified

The aim of the County Kildare Heritage Plan is to identify, preserve and conserve the built, natural and cultural heritage of the County. The working groups formulated actions to address the various issues raised in the consultation process. These actions will further the aim of the Heritage Plan and can be grouped under four broad objectives:

1. To facilitate the collection and dissemination of heritage information.
2. To raise public awareness, understanding and appreciation of County Kildare's heritage.
3. To promote best practice in heritage conservation and management.
4. To inform policy and provide advice to County Kildare Local Authorities.

*“Heritage is a presence which physically expresses the essence and the heart-beat of collective historical identity”*



# HERITAGE PLAN DEVELOPMENT AND IMPLEMENTATION PROCESS



A historical map of the Ballitore and Timolin area in Kildare, Ireland. The map shows the River Rye flowing through the center, with Ballitore to the north and Timolin to the south. Various landmarks are labeled, including 'The Nine Trees', 'Crooks to', 'field', 'Park', 'Akerane', 'Quarries', and 'Turnpike'. The map is detailed with roads, fields, and buildings.

## ABBREVIATIONS USED IN THIS PLAN

DIT	Dublin Institute of Technology
DOEHLG	Department of Environment Heritage and Local Government
EIA	Environmental Impact Assessment
EPA	Environmental Protection Agency
HMAC	Historic Monuments Advisory Committee
IAVI	Institute of Auctioneers and Valuers of Ireland
IFA	Irish Farmers Association
IMO	Irish Museums Organisation
INTO	Irish National Teachers Organisation
IPCC	Irish Peatland Conservation Council
KCC <sup>2</sup>	Kildare County Council
KELT	Kildare European Leader Teoranta
KVEC	Kildare Vocational Educational Committee
NHA	National Heritage Area
NIAH	National Inventory of Architectural Heritage
NRA	National Roads Authority
NUIM	National University of Ireland Maynooth
NMI	National Museum of Ireland
OPW	Office of Public Works
Protected Structure	A structure or a specified part of a structure which are of special architectural, historical, archaeological, artistic, cultural, scientific, social or technical interest.
RIAI	Royal Institute of Architects of Ireland
RMP	Record of Monuments and Places
RPS	Record of Protected Structures
SAC	Special Area of Conservation
SPA	Special Protection Area
UCD	University Collage Dublin

---

<sup>2</sup> KCC refers to all sections within Kildare County Council i.e. Roads, Environment, Water, Architects, Kildare Library and Arts Service and Community and Enterprise





## OBJECTIVES AND ACTIONS

*“The aim of the County Kildare Heritage Plan is to identify, preserve and conserve the built, natural and cultural heritage of the County”*



## OBJECTIVE I – To Facilitate the Collection and Dissemination of Heritage Information



	Action	Proposed Partners
1.1	Prepare a Heritage Directory for County Kildare.	Community and Voluntary Forum, County Kildare Archaeological Society, DOEHLG, Kildare Local Authorities, Local History Federation, KELT, County Kildare Heritage Forum.
1.2	Encourage the cataloguing of collections in museums/heritage centres in the County.	Museums and Heritage Centres, County Kildare Heritage Forum, Local History Federation
1.3	Prepare an inventory of heritage and archaeological objects relating to County Kildare which are currently lodged in the National Museum of Ireland.	County Kildare Archaeological Society, County Kildare Heritage Forum, Local History Federation
1.4	Prepare an inventory of heritage objects relating to Kildare in private collections.	County Kildare Archaeological Society, County Kildare Heritage Forum, Heritage Council, Federation of Local History Groups, Owners of Private Collections.
1.5	Develop a methodology for the recording of oral histories in County Kildare. Collect, archive and promote existing oral histories. Revisit the 1938 Folklore study.	Community and Voluntary Forum, County Kildare Heritage Forum, KCC, Kildare Education Centre.
1.6	Establish an inventory of features, objects and artifacts worthy of preservation and recording throughout the County. Encourage local communities, heritage groups, history groups and schools to be come involved on a project basis.	County Kildare Archaeological Society, County Kildare Heritage Forum, DOEHLG, Federation of Local History Groups, KCC, HMAc, NMI, Local History Federation, KELT.
1.7	Support the recording of graveyard inscriptions; provide a guide to best practice and encourage gathered material to be lodged with the County Library.	Federation of Local History Groups, KCC, Kildare History and Family Research Centre.
1.8	Seek the expansion of the County Archive.	KCC, County Kildare Heritage Forum, County Kildare Archaeological Society, Local History Federation



## OBJECTIVE I – To Facilitate the Collection and Dissemination of Heritage Information

	Action	Proposed Partners
1.9	Encourage local businesses, Local Authorities and local schools to lodge archival material with County Archive. Explore the establishment of a media archive in the county.	KCC, County Kildare Heritage Forum
1.10	Explore access to church records.	Church Bodies, Kildare History and Family Research Centre, County Kildare Heritage Forum.
1.11	Collate archaeological excavation reports and EIA for County Kildare, ensure that copies of all such reports are lodged with the County Library and make available to the public. Encourage archaeological companies and individual archaeologists to lodge reports in the County Library.	Archaeological Companies, DOEHLG, KCC, HMA.
1.12	Prepare an inventory of established public right of ways in the County.	DOEHLG, Farming Organisations, KCC, KELT, Landowners, Waterways Ireland.
1.13	Prepare and maintain the Record of Protected Structures. Map protected structures.	KCC, Conservation Officer KCC, DOEHLG, NIAH, OPW.
1.14	Prepare an inventory of building material indigenous to Kildare.	DOEHLG, County Kildare Heritage Forum, KCC.
1.15	Prepare an inventory of vernacular architecture - Thatched cottages.	KCC, Conservation Officer KCC, DOEHLG, NIAH.
1.16	Collate and make available information on monuments, which are accessible to the public in the county.	KCC, Conservation Officer, DOEHLG, Kildare Failte, KELT
1.17	Collate existing datasets on natural heritage in County Kildare. Make information available. Identify information gaps.	Bórd na Móna, Coillte, DOEHLG, Eastern and Southern Regional Fisheries Boards, IFA, IPCC, NUIM, County Kildare Heritage Forum, Waterways Ireland, Kildare Failte, Forest Service

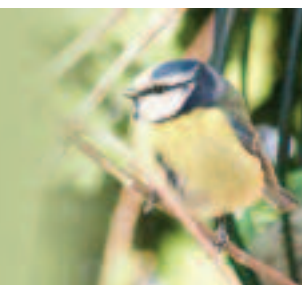
## OBJECTIVE I – To Facilitate the Collection and Dissemination of Heritage Information

	Action	Proposed Partners
1.18	Commence a habitat survey of the county, identifying locally important sites.	Bórd na Móna, Coillte, DOEHLG, Eastern and Southern Regional Fisheries Boards, IFA, IPCC, NUIM, KCC, Waterways Ireland,
1.19	Conduct a survey of hedgerows in the County to include extent, composition, condition, management and historical aspects.	DOEHLG, Coillte, IFA, County Kildare Heritage Forum, Teagasc.
1.20	Identify existing Tree Preservation Orders in the county. Identify and designate trees or groups of trees suitable for preservation.	Coillte, Forest Service, KCC.
1.21	Conduct a waterways corridor study for Kildare canals.	DOEHLG, KCC, Waterways Ireland, KELT
1.22	Produce an inventory of County Kildare's industrial heritage and examine possible future uses.	DOEHLG, Kildare Local Authorities, County Kildare Heritage Forum, NIAH, HMAc.
1.23	Identify sites of geology and geomorphology in the county. Compile an inventory of scientific papers relating to geology and geomorphology in the County.	DOEHLG, Geological Survey of Ireland, IFA, Teagasc, County Kildare Heritage Forum.
1.24	Prepare an inventory of flood plains, naturally occurring springs and fords in the County.	Geological Survey of Ireland, KCC.
1.25	Survey and record all bridges in the County	Conservation Officer, DOEHLG, NIAH
1.26	Conduct waterways corridor studies for rivers in the county	DOEHLG, KCC,
1.27	Conduct an audit of heritage education in the county	Heritage Forum, Kildare Education Centre, KELT
1.28	Conduct a survey on the suitable reuse/regeneration of cutover and cutaway bogs. Develop a pilot area to demonstrate results in the county.	Bórd na Móna, DOEHLG, IPCC.





## OBJECTIVE 2 – To Raise Public Awareness, Understanding and Appreciation of County Kildare’s Heritage



	Action	Proposed Partners
2.1	Promote the County Kildare Heritage Plan and its implementation by an annual seminar, progress reports and media coverage.	County Kildare Heritage Forum, KCC, KELT
2.2	Develop and maintain a dedicated heritage website for the county to be part of Kildare County Council's website. This web site will be linked to other relevant websites.	County Kildare Heritage Forum, KCC, County Kildare Archaeological Society, Kildare Failte, Local History Federation
2.3	Publicise inventories and surveys conducted as part of the plan, lodge in the County Library and make available to the public.	County Kildare Heritage Forum
2.4	Produce a series of heritage publications to promote all aspects of Kildare's heritage, built, natural and cultural. Target of two publications per year.	County Kildare Heritage Forum, DOEHLG, KCC
2.5	Conduct talks and exhibitions on various heritage aspects throughout the County.	Coillte, County Kildare Archaeological Society, DOEHLG, Kildare Local Authorities, County Kildare Heritage Forum, Library Service, NUIM, Waterways Ireland, Local History Federation
2.6	Explore the establishment of a County Museum <sup>3</sup> and County museum service. Develop links with and support existing local museums <sup>4</sup> in the county.	Department of Defence, County Kildare Archaeological Society, KCC, County Kildare Heritage Forum, Museums and Heritage Centres, HMAc, IMO, Kildare Failte, Local History Federation
2.7	Promote access for all to museums/heritage centres in the county including the military museum.	Department of Defence, County Kildare Heritage Forum, Museum and Heritage Centres, Kildare Failte
2.8	Establish a network of groups/individuals in the county.	Community and Voluntary Forum, County Kildare Heritage Forum, KCC, Local History Federation.
2.9	Improve access to archival material for research purposes.	NUIM, KCC, IMO

<sup>3</sup> County museum will include an area / building which will if possible facilitate the display of historic art in the county.

<sup>4</sup> For the purpose of the plan local museums in their broadest sense ie. Heritage Centres

## OBJECTIVE 2 – To Raise Public Awareness, Understanding and Appreciation of County Kildare’s Heritage

	Action	Proposed Partners
2.10	Identify and promote walking routes and “Greenways” within the county, including villages and towns. Identify and promote ancient roadways within the county such as Slí Dála.	Bórd na Móna, Coillte, DOEHLG, Farming Organisations, KCC, KELT, County Kildare Heritage Forum Kildare Education Centre, Landowners, Waterways Ireland, Kildare Failte
2.11	Establish links between Third Level Institutions, local authorities and local communities, which will benefit local heritage.	DIT, KCC, County Kildare Heritage Forum, NUIM, UCD
2.12	Inform general public, particularly estate agents, auctioneers, farmers and public bodies of protected sites (NHA, SAC, SPA), Protected Structures (RPS) and monuments and archaeological sites (Record of Monuments and Places) and make them aware of the level of protection these sites and structures have under national and international legislation.	DOEHLG, County Kildare Heritage Forum, Farming Organisations, KCC, Teagasc.
2.13	Hold talks and work shops for owners of protected structures, which will address the issues of conservation, maintenance, funding and planning.	DOEHLG, Conservation Officer, Owners of Protected Structures, County Kildare Heritage Forum, KCC, KELT
2.14	Promote access to protected structures by developing a “doors open” day for owners of Protected Structures receiving tax relief under Section 482 of the Taxes Consolidated Act, 1997.	DOEHLG, Conservation Officer, County Kildare Heritage Forum, KCC.
2.15	Establish a network of owners of Protected Structures.	County Kildare Archaeological Society, DOEHLG, County Kildare Heritage Forum, KCC,
2.16	Review and revive County Kildare Monument Watch Scheme.	County Kildare Archaeological Society, County Kildare Heritage Forum, DOEHLG, Federation of Local History Groups, KCC, HMAc.
2.17	Support the publication of Kildare’s Archaeological Inventory.	County Kildare Archaeological Society, County Kildare Heritage Forum, DOEHLG, KCC
2.18	Raise the profile of the work of the Historic Monuments Advisory Committee. Seek to increase funding made available to this committee.	County Kildare Heritage Forum, KCC, HMAc, County Kildare Archaeological Society
2.19	Display excavation artifacts through the Library and Arts Service and the proposed Museum Service.	DOEHLG, KCC, NMI

## OBJECTIVE 2 – To Raise Public Awareness, Understanding and Appreciation of County Kildare’s Heritage

	Action	Proposed Partners
2.20	Prepare an inventory of Heritage gardens, parks and demesnes in Kildare.	KCC, County Kildare Archaeological Society, DOEHLG, NIAH, HMAc
2.21	Promote the Birdwatch Ireland Countryside Bird Survey.	Bird Watch Ireland, DOEHLG, KCC, Kildare Failte, Teagasc, IFA
2.22	Develop a “birds in the school yard project” to be piloted in a school in each electoral division.	Bird Watch Ireland, DOEHLG, KCC, Kildare Education Centre, Kildare Failte
2.23	Promote awareness of importance of wildlife on intact bogs and cutaway bogs.	Bórd na Móna, DOEHLG, IPCC.
2.24	Encourage communities adjacent to cutaway and cutover bogs to develop amenities in conjunction with Bórd na Móna.	Bórd na Móna, Community and Voluntary Forum, IPCC, KCC.
2.25	Raise awareness of the importance of water quality for nature conservation.	DOEHLG, KCC.
2.26	Produce an information sheet on the importance of maintaining existing waste treatment systems.	DOEHLG, EPA, KCC.
2.27	Promote the “Heritage in Schools” Programme. Seek to promote awareness of built heritage in schools. Assist the Kildare Education Centre in the development of Heritage related training Courses.	Heritage Council, Kildare Education Centre, KCC, DOEHLG, KELT
2.28	Promote the awareness and conservation of Heritage on farms.	DOEHLG, IFA, KCC, Teagasc.
2.29	Develop a list of local heritage projects that would benefit Heritage in the county and which could be carried out by local groups.	Community and Voluntary Forum, KCC, Local History Federation, County Kildare Archaeological Society, KELT





## OBJECTIVE 3 – To Promote Best practice in Heritage Conservation and Management

	Action	Proposed Partners
3.1	Develop an education programme for local authority staff and councillors on all aspects of Kildare's built, natural and archaeological Heritage.	Kildare Local authorities, County Kildare Heritage Forum, DOEHLG.
3.2	Establish a placenames committee in the county, which will re-examine the policy on the naming of new developments and new roads. This policy will take consideration of local heritage and local townland names in the naming of new developments. Produce a policy paper.	County Kildare Archaeological Society, Federation of Local History Groups, KCC.
3.3	Review the policy on signage within the county i.e. town names, rivers and heritage sites.	KCC, NRA, Kildare Failte
3.4	Devise a mechanism for the public to request that the Local Authority include structures on the Record of Protected Structures (RPS).	County Kildare Heritage Forum, Conservation Officer, KCC.
3.5	Circulate literature on conservation of Protected Structures to libraries.	DOEHLG, KCC.
3.6	Provide a training course on conservation techniques and the use of traditional building methods.	Construction Industry Federation, DOEHLG, KCC.
3.7	Provide advice and training for local authority staff, local communities and management committees on the best practice for the management of graveyards. This training will include consideration of natural and built heritage.	DOEHLG, Heritage Council, KCC.
3.8	Establish a "Golden Mile" project in the County.	KCC, DOEHLG, KELT, Crann.
3.9	Encourage the planting of native trees in suitable locations through the Native Woodland Scheme and Neighbourwood Schemes.	Community and Voluntary Forum, DOEHLG, Forest Service, KCC, Kildare Failte

## OBJECTIVE 3 – To Promote Best practice in Heritage Conservation and Management

	Action	Proposed Partners
3.10	Produce policy papers and “best practice guidelines” on the following topics: The siting and landscaping of new developments. Biodiversity and road design (considering the NRA guidelines). Biodiversity considerations in site development and site management.	DOEHLG, KCC.
3.11	Produce guidelines for the incorporation of biodiversity considerations into local authority activities.	DOEHLG, KCC.
3.12	Examine the feasibility of strengthening enforcement measures by use of a “landscape bond”.	County Kildare Heritage Forum, KCC.
3.13	Initiate a conservation and management strategy for the Curragh. Review existing plans i.e. SRUNA and Task Force reports.	Curragh Racecourse, Department of Defence, KELT, DOEHLG, County Kildare Heritage Forum, Kildare Failte
3.14	Provide training, advice and best practice guidelines for Tidy Towns Associations and community groups in relation to wildlife and built heritage.	DOEHLG, Heritage Council, KCC, Kildare Failte, KELT
3.15	Promote the correct management of hedgerows and roadside verges Provide training for landowner, contractors and local authority staff.	DOEHLG, Hedge Contractors, IFA, KCC, Teagasc.
3.16	Promote the geology and geomorphology of the county.	Geological Survey of Ireland, KCC, KELT



## OBJECTIVE 4 - To Inform policy and Provide Advice to Kildare Local Authorities

	Action	Proposed Partners
4.1	Seek the appointment of staff, resources permitting, within Kildare Local Authorities to ensure adequate expertise is available to facilitate the conservation of the county's heritage.	County Kildare Archivist (full time), County Archaeologist, County Landscape Architect, DOEHLG, Kildare Local authorities.
4.2	Establish county forum to investigate the issues of access and the implications for insurance.	Bórd na Móna, Coillte, DOEHLG, Farming Organisations, Heritage Council, KELT, KCC, Landowners, Waterways Ireland.
4.3	Establish Architectural Conservation Areas throughout the county	DOEHLG, KCC, NIAH.
4.4	Prepare two Village Design Statements for the county as a pilot project.	County Kildare Heritage Forum, KCC, Community and Voluntary Forum, DOEHLG.
4.5	Seek adequate grants for the conservation of Protected Structures through the DOEHLG grant scheme.	KCC, Conservation Officer, DOEHLG, County Kildare Heritage Forum.
4.6	Conduct a study on the appropriate re-use of protected structures. Encourage continued use and appropriate reuse of vacant protected structures.	KCC, DOEHLG, Conservation Officer, Kildare Failte
4.7	Conduct heritage appraisals of all County, Town and Local Area Plans to ensure that all aspect of Heritage, as defined by the Heritage Act 1995, are considered. Include information generated by local surveys and inventories in town and local plans.	KCC, DOEHLG.
4.8	Prepare an inventory of graveyards in Kildare, ownership, condition and management body.	KCC, DOEHLG.
4.9	Carry out an audit of sites and structures of natural, archaeological, architectural, or historic merit which are owned by County Kildare Local Authorities (including graveyards) and set up an in-house advisory group to explore issues of management and maintenance. Establish an inventory of Local Authority owned works of art.	County Kildare Local Authorities, DOEHLG, NIAH, Heritage Council.
4.10	Prepare a bio-diversity plan for the county (in accordance with the National Biodiversity Plan).	Natural Heritage Working Group
4.11	Review current consultation process between County Kildare Local Authorities and statutory bodies in relation to all aspects of heritage with a view to identifying how these processes can be improved. Identifying how these processes can be improved.	County Kildare Local Authorities, Heritage Forum, Statutory Bodies as per Planning and Development Act 2000.
4.12	Prepare an Indicative Forestry Strategy for the County.	Coillte, Forest Service, KCC.





## STATEMENT OF STRATEGY

*“The aim of the County Kildare Heritage Plan is to identify, preserve and conserve the built, natural and cultural heritage of the county”*





## **Introduction**

This section will address how the plan will be delivered over the next five years. The County Kildare Heritage Plan is a countywide plan with many partners sharing a responsibility for its implementation. While Kildare County Council will lead many of the actions, each of the other Kildare Local Authorities, Naas, Newbridge, Leixlip and Athy Town Councils will have a role to play. Whilst the Heritage Officer will in many instances act as co-ordinator for projects identified in the plan, the County Kildare Heritage Forum will seek the participation of key partners in all the actions identified in the County Kildare Heritage Plan. As this Heritage Plan is a 'first' for the county and represents a new framework, it will be important to allow for flexibility when it comes to implementing actions as the new structure evolves.

## **Timescale**

The plan sets out actions for a five-year period. 2005-2009. A detailed work programme will be identified each year outlining, actions, partners, sources of funding and timeframes. The County Kildare Heritage Forum will propose the annual work programme in agreement with all partners.

## **Partners**

The proposed partners listed with each action are in most cases, confined to those organisations represented on the Heritage Forum or within the Working Groups. As the annual work programme is agreed commitments will be sought from relevant partners, including other additional partners (not represented on the Forum). There will be ongoing consultation with other relevant organisations regarding participation in proposed actions. The lead partner for each action will be identified as each project arises.



## Finance

A budget of approximately 500,000 is estimated for the delivery of the actions over the lifetime of the Plan, excluding staff costs. This requires an average annual budget of 100,000. It should be recognised that some actions will require minimal funding, while others such as the development of a County Museum or the expansion of the County Archive, although supported by the County Kildare Heritage Forum, fall outside of the remit of the Plan to deliver.

The National Heritage Plan, published in 2002 indicates that 12.7m will be made available over a five year period for the implementation of Local Heritage Plans. The Heritage Council has a budget for the implementation of Heritage Plans in 2005. To qualify for funding from the Heritage Council the Plan must be agreed and adopted by the Elected Members of Kildare County Council.



The Heritage Council has agreed, in principle, to consider the Plan as a five-year strategic funding application. The Heritage Council will consider funding actions in the Plan, which are compatible with the objectives of the Heritage Council's Plan 2001-2005. Kildare Local Authorities are committed, in partnership with others, to the delivery of the actions as listed in the plan over the next five years and in doing so will consider funding allocation for the delivery of the Plan in accordance with the estimates for 2005. The Kildare County Council will also support the delivery of the Plan through the work of its Heritage officer and other professional staff.

The commitment of other key partners to funding actions in the Plan, will largely be dependant on their funding allocations and remits, and will be decided when work programmes are being drawn up. However, the County Kildare Heritage Forum will actively seek funding from partners other than the Heritage Council and the Kildare Local Authorities.

## Monitoring and Evaluation

The County Kildare Heritage Plan sets out a series of actions to be achieved over a five-year period. The County Kildare Heritage Forum will monitor the annual work programme. The County Kildare Heritage Forum will evaluate the implementation of the plan in year three of the lifetime of the plan.





## APPENDIX ONE

*“The aim of the County Kildare Heritage Plan is to identify, preserve and conserve the built, natural and cultural heritage of the county”*





## APPENDIX ONE    The Formulation of the Heritage Plan 5

February 2003	The Heritage Plan process was presented to Management Team, Community and Voluntary Forum and the Local Urban and Rural Development Strategic Policy Committee of Kildare County Council. The concept of a Heritage Plan was presented to the Kildare History and Family Research Centre Annual Seminar.
March 2003	The Heritage Plan process was presented to the Corporate Policy Group.
April 2003	The Local Urban and Rural Development SPC endorsed the Heritage Plan process.
May 2003	A Heritage Seminar held in the Heritage Centre Kilcullen.
May 2003	The Heritage Plan process was presented to Kildare County Council. Agreement was secured from Kildare County Council to establish the County Kildare Heritage Forum. Suggestions were made as to Forum composition.
June-Sept	Individuals, organisations, Government Department and agencies were invited to make nominations County Kildare Heritage Forum.
23rd September 2003	The inaugural County Kildare Heritage Forum Meeting was held in the Council Chamber in Kildare County Council. Presentations were made by Mr Liam Scott, The Heritage Council, Mr Naill Bradley, Kildare County Manager and Bridget Loughlin, Kildare Heritage Officer. Kildare County Kildare Heritage Forum agreed to invite submissions and to hold public consultation meeting around the County. Natural, Built and Archaeological/ Cultural Heritage Working Groups were established. The Forum identified individual who would be asked to join the working groups because of the expertise they would add to the groups.
19th 20th 21st November 2003	The first meeting for Natural, Built and Cultural/Archaeological working groups were held. The relevant Working Group Documents were presented to each member of the various Working groups. The issues raised at the heritage seminar workshops, public consultations, and submissions were collated. The main issues were established and actions identified.

## APPENDIX ONE *The Formulation of the Heritage Plan<sup>5</sup> (continued)*

3rd 4th 5th December 2003	The second Working Group Meeting for Natural, Built and Cultural/Archaeological working groups were held. Further discussion of issues and identifying actions occurred. A position paper was prepared identifying actions and making recommendations for inclusion in the plan.
12th December 2003	The third County Kildare Heritage Forum Meeting was held. Chairperson was elected. The aim of the Heritage Plan was discussed. Position papers from three working groups were presented.
7, 8, 9th January 2004	The second County Kildare Heritage Forum Meeting was held. The aim and objectives of the Heritage Plan were agreed. The proposed partners were identified.
13th February 2004	The third County Kildare Heritage Forum meeting was held. The Heritage Officer made presentations on topics, which appear in the Heritage Plan. The Forum agreed the aim and objectives. It was agreed to proceed to the first draft of the Kildare Heritage Plan.
18th March 2004	The fourth County Kildare Heritage Forum Meeting was held. The first draft of the Kildare Heritage Plan was presented and agreed.
27th April 2004	The Draft Heritage Plan presented to Kildare County Council Management Team.
31st May 2004	The Draft Heritage Plan adopted by Kildare County Council.
1st June –25th June	The Heritage Plan was on public display. Four public consultation meetings were held throughout the County.
8th July 2004	The fifth County Kildare Heritage Forum meeting was held. The public submissions were reviewed and incorporated into the final plan. The final plan was agreed and adopted by the County Kildare Heritage Forum.
26th July 2004	The Heritage Plan adopted by Kildare County Council.

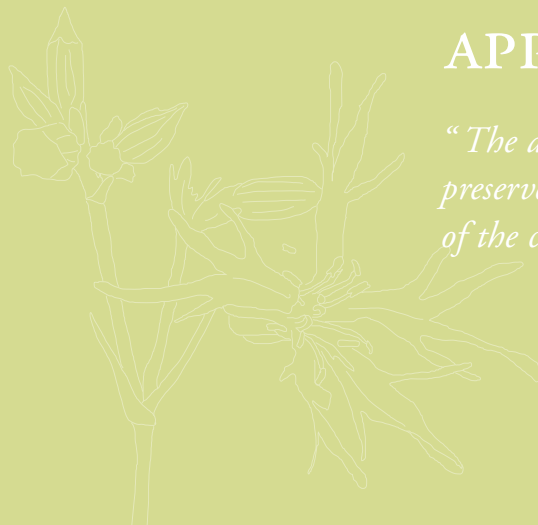


<sup>5</sup> This process was informed by the Heritage Councils "A methodology for Local Authority Heritage Officers on the preparation of County / City Heritage Plans"



## APPENDIX TWO

*“The aim of the County Kildare Heritage Plan is to identify, preserve and conserve the built, natural and cultural heritage of the county”*



## APPENDIX TWO Membership of the County Kildare Heritage Forum

Sector		Agency/Body
Local Government	Cllr PJ Sheridan Cllr Fionnuala Dukes Cllr Tony McEvoy Cllr Seamus Moore Cllr Pat Black Cllr Breege Lynch Cllr Noel Scully	Kildare County Council Kildare County Council Kildare County Council Naas Town Council Newbridge Town Council Leixlip Town Council Athy Town Council
Kildare County Council	Mr Dara Wyer Mr Peter Black Mr Mario Corrigan Ms Bridget Loughlin	Environmental Awareness Officer, Kildare County Council Conservation Officer, Kildare County Council Kildare Library Services, Kildare County Council Heritage Officer, Kildare County Council
Local Development State Agencies	Mr Liam Hartford <sup>6</sup> Mr Hugh McCreevy Mr Bill Murren Mr Dominic Molony Mr Tom Egan Mr Michael Brady	KELT Teagasc Forest Service Waterways Ireland Bórd na Móna Midlands and Eastern Regional Tourism Authority
Government Departments	Mr Marc Richie Dr Linda Patton	National Inventory of Architectural Heritage of the National Monuments & Historic Properties Section of the Dept. of Environment, Heritage & Local Government National Parks & Wildlife Service of the Dept. of Environment, Heritage & Local Government
Educational	Dr John Sweeney Ms Ann Kelleher	NUI Maynooth Kildare Education Centre
Social Partners	Mr Ger Smith Mr Sean Cleary Mr Paul Croghan	IFA Community and Voluntary Forum Community and Voluntary Forum
Heritage Groups/Committees	Mr Niall Meagher Mr Eamon Kane Mr Ger McCarthy	Historic Monuments Advisory Committee County Kildare Archaeological Society Federation of Local History Groups

<sup>6</sup> Mr. Kieran Duggan represented KELT until February 2004



## APPENDIX TWO Membership of the Working Group

Natural Heritage Working Group		Archaeological/Cultural Heritage Working Group	
Dr Linda Patton Bill Murren Ger Smith Hugh McCreevy Tom Egan Dara Wyrer Dr John Sweeney Cllr Tony McEvoy Cllr Noel Scully Cllr Breege Lynch Dr Anne Behan Caroline Hurley George Hipwell	National Parks and Wildlife Service Forest Service IFA Teagasc Bórd na Móna Environmental Awareness Officer KCC NUI Maynooth Kildare County Council Athy Town Council Leixlip Town Council Ecologist IPCC Coillte	Liam Hartford Ger McCarthy Sean Cleary Michael Brady Cllr Fionnuala Dukes Cllr Seamus Moore Mario Corrigan Eamon Kane Anne Kelleher Frank Taaffe Sylvia Desmond Noel Dunne	KELT Kildare Federation Of Local History Groups Community and Voluntary Forum MERTA Kildare County Council Naas Town Council Library Service Kildare Archaeological Society Director of Kildare Education Centre Athy Heritage Company NRA Archaeologist NRA Archaeologist
Built Heritage Working Group		Aspects of heritage considered in each Working Group	
Mr Marc Richie Mr Niall Meagher Mr Dominic Molony Mr Peter Black Cllr PJ Sheridan Cllr Pat Black Mr Paul Croghan Emer Doyle Rachel McKenna Mairead Weaver	National Inventory of Architectural Heritage Historic Monuments Advisory Committee Waterways Ireland Conservation Officer Kildare County Council Newbridge Town Council Community and Voluntary Forum Planning Dept KCC Architects Department KCC Heritage and Planning Division of National Monuments Section of Historic Properties Division of DOEHLG <sup>7</sup>	<p>The Built Heritage group considered the following aspects of heritage:</p> <ul style="list-style-type: none"> <li>• monuments</li> <li>• architectural heritage</li> <li>• heritage gardens and parks</li> </ul> <p>The Natural Heritage Group considered the following aspects of heritage:</p> <ul style="list-style-type: none"> <li>• fauna</li> <li>• landscape</li> <li>• wildlife habitats</li> <li>• flora</li> <li>• geology</li> <li>• inland waterways</li> </ul> <p>The Archaeological/Cultural Heritage Group considered the following aspects of heritage:</p> <ul style="list-style-type: none"> <li>• archaeological objects</li> <li>• museums and archives</li> <li>• education</li> <li>• heritage objects</li> <li>• local and military history</li> </ul>	

<sup>7</sup> Dulra O'Riordan (DOELGH) also attended **Built Working Group** meetings



## APPENDIX THREE

*“The aim of the County Kildare Heritage Plan is to identify, preserve and conserve the built, natural and cultural heritage of the county”*

## APPENDIX THREE Public Consultation

Attendance/ participation in Heritage Seminar and workshops In the Kilcullen Heritage Centre in May 2003.

Geraldine Gahan	Edel Decics	Mark Keating	Mary McNamee	Cllr Jim Reilly
Moira Baxter	Aine Delahunt	Naoimi Keena	Tony Mooney	Brendan Ryan
Cllr Paddy Behan	Emer Doyle	Patricia Keenan	Con Morrin	Cllr PJ Sheridan
Dr Anne Behan	Cllr Fionnuala Dukes	Brian Kelly	Olive Morrin	Pat Sherry
Pat Bell	Nessa Dunlea	Ed Kelly	Sinead Mullen	Sean Smith
Mary Berney	Kenneth Dunne	Karen Kenny	Eva Mullooly	Shelia Smith
Elizabeth Birch	Noel Dunne	Liam Kenny	Damian Murphy	Ger Smith
Peter Black	Sean English	Brian Keyes	Anne Murray	Margarite Solon
Catherine Boylan	Aidan Farrell	Stephen Kilroy	Fiona Nick	Mary Stones
Celine Broughal	Elma Fenton	Sean Landers	PJ Nolan	Brian Swan
Ann Burke	Sr Finten	Declan Loakman	Mr Nugent	Val Swan
Margaret Butterfield	Andy Flaherty	Eileen Logan	Margaret O'Riordan	Roy Thompson
Tony Byrne	Sean Flannery	Thomas Loughlin	Anne O'Byrne	Desmond Travers
Brian Casey	William Forde	Nicholas Louw	Orla O'Connell	Dr Barbara Walsh
Emma Jane Clarke	Pat Gallagher	Fionnuala Lynch	Fergal O'Donovan	Mairead Weaver
Seamus Clinch	John Geraghty	Conor Mallaghan	Des O'Leary	Gordon Weston
Mairead Connellan	Gail Gibson	Tom Malone	Eimear O'Neill	Vincent Young
Anne Crofton	Liam Hartford	Brian McCabe	Amanda Pedlow	Valerie J Keeley Archaeological Co.
Elizabeth Cullen	Muriel Hendy	Cllr Tony McEvoy	Doreen Phelan	
Romie Cullen	Bernadette Hurst	Tracey McGibbon	Percy Podger	
Senator Dardis	Michael Jacob	Rosemary McLoughlin	Joan Potterton	

## APPENDIX THREE Submissions Received

Individual	Organisation		Organisation	
Con Costello	Michael Boland	Institute of Geologists of Ireland	Karel Kiely	Kildare Heritage & Genealogy Co Ltd
Eamon Kane	Catherine Boylan	Celbridge Historical Society	Thomas Loughlin	Archaeologist
Elizabeth Cullen	Richard Brabazon	Curragh Local History Group	Brian McCabe	Kill History Group
Gabrielle Brabazon	Emmet Burns	Archaeologist, Forestry Service	Cormac McCarthy	Eastern Regional Fisheries Board
Grace Maher	James F Collins	Soil Science Dept UCD	Sr Mary Minehan	Brigidine Sisters/Cairde Bhride
Guy St John Williams	Mario Corrigan	Library Service	Olive Morrin	Teresa Brayton Heritage Group
John Sweeney	Joanna Cramsie	Casteltown House	Donna Mullen	Bat Conservation Ireland
Liam Kenny	Anne Crofton	KCC Architects dept	Eamonn Mulvihill	Kildare Heritage Company
Mary Harney	Christine Crofton	BirdWatch Ireland	PF Nowlan	Military Heritage of Ireland
Michael Doolan	Deaglan de Paor	Newbridge Tidy Towns Assoc.	Donal O'Carroll	The Military History Society of Ireland
Michael Mullally	Declan Doogue	County Recorder BBSI	Cllr Kevin O'Connor	Leixlip Town Council
Padraig Clancy	Nessa Dunlea	Kilcullen Heritage Group	Matthew Parkes	Irish Geological Heritage Programme
PF Nowlan	Richard Farrell	Kildare Sports Partnership	Margaret Pearse	Ballymore Eustace Historical & Heritage Soc.
Robert Guinness	Pat Farrington	Forestry Service	Mary Quinn-Kelly	Dept of Zoology, UCD
Romie Cullen	Sean Flannery	Tir Na Mona	George Smilie	Soil Science Dept UCD
Sean Walsh	Bernadette Gilligan	Killeighter Graveyard Committee	Margharita Solon	Nas Na Riogh Housing Association
Tom Madden	Lisa Harlow	Intel	John Thompson	Inland Waterways Association of Ireland Kildare Branch
	William E Hogg	Mills and Millers of Ireland	Mary Stones	Kildare Town Heritage Centre
	Gregg Ryan	Irarnrod Eireann	Desmond Travers	Military Vehicle Club of Ireland
	Ger Kelly	Athy Tidy Towns	Barbara Walsh	Kildangan Community Development Assoc.
				Irish Wind Energy association
				Kildare Archaeological Society



## APPENDIX THREE Attendance at Public Meetings

Allenwood, Nurney, Kildare, Newbridge, Naas, Ballitore, Athy, Maynooth and Celbridge.			
Anne Gaynor	Ger Smith	Mary Corcoran	Richard Brabazon
Anne Kellegher	Geraldine Gahan	Mary Ryan	Robert Kelly
Ann McHugh	Grace Maher	Maurice Heffernan	Robert O'Reilly
Bernadette Gilligan	John McKenna	Michael Doolan	Romie Cullen
Bernie McMahon	Janus Preisler	Michael Jacob	Rosario Corcoran
Breda Rogers	Jim Cullen	Michael Lawler	Sally O'Connor
Brian Doyle	Jim Waters	Michelle Devine	Sr Fionntain Daibhis
Bridie Loughlin	Joe Corrigan	Moira Baxter	Sarah Fields
Catherine Gegan	John J Walsh	Morna Hosey	Seamus Taaffe
Clive Delaney	John Sweeney	Nessa Dunlea	Seamus Moore
Déaglán de Paor	Jonathan Delaney	Nicky Martin	Sean Marchetti
Eamon Burke	Jonathan Irwin	Noeleen Loughlin	Séan O Fearghail TD
Eamon Kane	Joseph Connelly	Olive Morrin	Sean O Leary
Eileen Loughlin Doyle	Joy Cullen	Pat Behan	Sinead Mullen
Eilish Burke	Kathleen Lawler	Cllr Pat Black	Stephen Talbot
Eimear O'Doherty	Kevin Durkan	Pat Finerty	Tino Marchetti
Elaine Donohoe	Liam Hartford	Pat Kinsella	Tom Madden
Emer Doyle	Lilly O'Meara	Patricia Keenan	Tony Nolan
Eugene Doyle	Maeve Maloney	Patrick Kelly	Tony White
Cllr Fionnuala Dukes	Margaret Timmons	Patrick O Loughlin	Violet Shailock
Frederick Preisler	Mairead Connellan	Paul Croghan	
Frank Taaffe	Marina Moore	Peg Regan	
Gabrielle Brabazon	Mario Corrigan	Phil O'Shea	
Ger Kelly	Martin Philips	Rita Edwards	

## APPENDIX FOUR Relevant Heritage Legislation

National and EU Heritage Legislation	International Conventions and Agreements which Ireland has signed and ratified
<b>Heritage and Planning</b> Planning and Development Act, 2000 Heritage Act, 1995 Environmental Impact assessment (Council Directive 85/337/EEC, as amended) Strategic Environmental Assessment (Council Directive 2001/42/EC)	UNESCO Convention for the protection of the World Cultural and Natural Heritage (ratified 1992).  European Convention on the Protection of the Architectural Heritage of Europe (Granada Convention), 1997.  European Convention on the Protection of the Archaeological Heritage (Valletta Convention), 1997.  Convention on Wetlands of International Importance (Ramsar Convention), 1971 (ratified, 1984)  Convention on International Trade in Endangered Species (CITES), 1974.  Convention on the Conservation of European Wildlife and Natural Habitats (Berne Convention), 1979 (ratified, 1982)  Convention on the Conservation of Migratory Species of Wild Animals (Bonn Convention), 1979 (ratified, 1983)  Convention on Biological Diversity, 1992 (ratified, 1996)  Agreement on Conservation of Bats in Europe (Bonn Convention), 1993 (ratified, 1995)  International Tropical Timber Agreement 1994, (1996).  Agreement on the Conservation of African-Eurasian Migratory Waterbirds (AEWA) (Bonn Convention), 1996.  Pan-European Biological and Landscape Diversity Strategy (endorsed 1995).  European Landscape Convention, 2000, (ratified, 2002)
<b>Built Heritage</b> National Monuments Acts 1930-1994 National Cultural Institutions Act, 1997 Architectural Heritage (National Inventory) and Historic Monuments (miscellaneous Provisions) Act, 1999 Planning and Development Act, 2000	
<b>Natural Heritage and Waterways</b> Wildlife Act, 1976 Wildlife (Amendment) Act, 2000 European Communities (Natural Habitats) Regulations, 1997 Birds Directive (Council Directive 79/409/EEC), 1979 Habitats Directive (Council Directive 92/43/EEC), 1992 Water Framework Directive (Council Directive 2000/60/EC), 2000	
<b>Museums and Archives</b> National Cultural Institutions Act, 1997 Local Government Acts 1994 and 2001	
<b>Landscapes and Heritage Gardens and Parks.</b> Planning and Development Act 2000.	