

KILDARE LOCAL AUTHORITIES



Annual Report 2011

Table of Contents	Page
Foreword	3
Offices and Opening Hours	5
Membership of Kildare County Council	6
Corporate Management Team	11
Strategic Policy Committees Membership	12
Membership of Committees	13
Meetings Held	17
Customer Care	18
Accessibility	19
Arts	20
Kildare Library Services	26
Community and Culture	32
Waste Management	55
Roads, Transportation and Public Safety	63
Fire Services	84
Water Services	96
Planning	104
Housing	116
Kildare Civil Defence	118
ICT Activities	122
Higher Education Grants	124
Register of Electors	126
Freedom of Information	127
Human Resources	128
Measuring Up	134
Conferences 2011	145
Financial Statement	149
Naas Town Council	151
Athy Town Council	165
Leixlip Town Council	175
Droichead Nua Town Council	193

Foreword

Welcome to the 2011 annual report of Kildare Local Authorities.

The annual report details Kildare Local Authorities activities and achievements during 2011.

The year 2011 was challenging for town and county councils. The focus for the most part, resulting from reduced budgets and diminishing resources, was on efficiency and value for money. Councillors and staff were challenged to maintain frontline services on reduced budgets.

The start of the year proved particularly challenging.

The severe cold and subsequent thaw affected road transport and water supplies in the county in the early part of the year. The council responded to these conditions by keeping roads open and safe and campaigning to conserve and sustain water supplies.

This severe weather event was followed closely by a very significant underground fire at Kerdiffstown landfill near Johnstown, which burned for a number of weeks. Our fire services and support personnel worked tirelessly during this time to deal with this fire. We are very thankful for the co-operation and assistance we received from other fire services and agencies during this time.

Some of the significant events of the year included:

- The launch of the Kildare Sports Partnership in January 2011. The partnership worked with various organisations, groups and agencies to increase participation in sport and physical activity with the county.
- The adoption of a new County Development Plan 2011-2017 in May.
- The Barrow Abstraction Scheme, Contract no. 1 for Srowland Water Treatment Plant DBO was signed in April 2011 and Contract no. 2 for Srowland to Ardsnull Rising Mains was signed in November 2011

- The launch of the Kildare Local Authorities Road Safety Plan 2011 – 2015 in December. Also our Road Safety Officer was named joint Road Safety Officer of the year at the Road Safety Authority Leading Lights Awards in October.
- The Kildare Age Friendly County Strategy 2011-2014 was launched in November 2011. The county programme with Older Voices Kildare established an older person's forum which came together for the first time in 2011 as EngAGE Kildare
- Following the signing of a formal Business Transfer Agreement Kildare County Council's waste collection service was transferred to a private operator. Also the operation of civic amenity sites at Sillcott Hill, Kilcullen and Gallows Hill, Athy were contracted out to a private operator.
- The Universal Access Naas Town Hall was completed in 2011

Sincere thanks is due to the elected members, management and staff who continue to work together to achieve greater efficiencies in order to meet the needs of our citizens.

Good wishes



Michael "Spike" Nolan

Mayor



Michael Malone

County Manager

Offices and Opening Hours

Headquarters; Áras Chill Dara, Devoy Park, Naas, Co. Kildare

Telephone: 045-980200, Fax: 045-980240

E-mail: secretar@kildarecoco.ie

Website: www.kildarecountycouncil.ie

24 Hour Emergency Number: 1890 500 333

Opening Hours:

Main Building: 9:00 a.m. – 5:00 p.m. Monday to Friday (our offices are closed to the public on Wednesday mornings until 9:30 a.m.)

Motor Tax Office: 9:15 a.m. – 3:15 p.m.

Planning Department: 9:00 a.m. – 4:00 p.m.

Housing Department: 9:00 a.m. – 2:00 p.m.

Finance Section: 9:30 a.m. – 4:30 p.m.

Roads, Transport and Public Safety: 9:30 a.m. – 4:30 p.m.

Library Headquarters

Riverbank, Newbridge Telephone: 045-431109

Area Offices






Athy Area Office	Rathstewart, Athy	059-8631329
Clane Area Office	The Woods, Clane	045-892695
Kildare Area Office	Newbridge Industrial Estate	045-437556
Maynooth Area Office	Leinster Street, Maynooth	01-6286236
Naas Area Office	Áras Chill Dara, Naas	045-980425

Town Councils

Athy Town Council	Rathstewart, Athy	059-8631444
Naas Town Council	Áras Chill Dara, Naas	045-980990
Newbridge Town Council	Town Hall, Newbridge	045-980560
Leixlip Town Council	Newtown House, Leixlip	01-6245777

Membership of Kildare County Council




There are 25 members representing 5 electoral areas – Athy, Celbridge, Clane, Kildare and Naas

		<p>Name: Councillor Richard Daly Electoral Area: Athy Political Party: Fine Gael Contact Details: 087-6248886</p>
		<p>Name: Councillor Martin Miley Jnr Electoral Area: Athy Political Party: Fianna Fail Contact Details: 087-3998478</p>
		<p>Name: Councillor Ivan Keatley Electoral Area: Athy Political Party: Fine Gael Contact Details: 087-2731335</p>
		<p>Name: Councillor Mark Wall Electoral Area: Athy Political Party: The Labour Party Contact Details: 083-3341488</p>

 <p>Celbridge</p>		<p>Name: Deputy Mayor Senan Griffin Electoral Area: Celbridge Political Party: Fine Gael Contact Details: 01-6285177</p>
		<p>Name: Councillor Anthony Larkin Electoral Area: Celbridge Political Party: Non-Party Contact Details: 087-2128837</p>
		<p>Name: Councillor Kevin Byrne Electoral Area: Celbridge Political Party: The Labour Party Contact Details: 086-6009449</p>
		<p>Name: Councillor John McGinley Electoral Area: Celbridge Political Party: The Labour Party Contact Details: 01-6285293</p>
		<p>Name: Councillor Frank O'Rourke Electoral Area: Celbridge Political Party: Fianna Fail Contact Details: 087-2555257</p>
		<p>Name: Councillor Colm Purcell Electoral Area: Celbridge Political Party: The Labour Party Contact Details: 087-2539493</p>

		Name: Councillor Seamus Langan Electoral Area: Clane Political Party: Fine Gael Contact Details: 087-2871347
		Name: Councillor Liam Doyle Electoral Area: Clane Political Party: Fianna Fail Contact Details: 01-6287629
		Name: Brendan Weld Electoral Area: Clane Political Party: Fine Gael Contact Details: 045-869340
		Name: Councillor Pádraig McEvoy Electoral Area: Clane Political Party: Non-Party Contact Details: 086-8658262

		Name: Councillor Suzanne Doyle Electoral Area: Kildare Political Party: Fianna Fail Contact Details: 045-521046
		Name: Councillor Francis Browne Electoral Area: Kildare Political Party: The Labour Party Contact Details: 045-526934
		Name: Councillor Fiona O'Loughlin Electoral Area: Kildare Political Party: Fianna Fail Contact Details: 045-436792
		Name: Councillor Tony O'Donnell Electoral Area: Kildare Political Party: Fine Gael Contact Details: 087-9081649
		Name: Mayor Micheál "Spike" Nolan Electoral Area: Kildare Political Party: Fine Gael Contact Details: 045-486881
		Name: Councillor Paddy Kennedy Electoral Area: Kildare Political Party: Non-Party Contact Details: 045-433310

		Name: Councillor Willie Callaghan Electoral Area: Naas Political Party: Fianna Fail Contact Details: 045-875565
		Name: Councillor Fintan Brett Electoral Area: Naas Political Party: Fine Gael Contact Details: 087-6257842
		Name: Councillor Paddy MacNamara Electoral Area: Naas Political Party: The Labour Party Contact Details: 045-896590
		Name: Councillor Darren Scully Electoral Area: Naas Political Party: Fine Gael Contact Details: 086-3860955
		Name: Councillor Seamie Moore Electoral Area: Naas Political Party: Non-Party Contact Details: 087-2497813

Corporate Management Team

County Manager	Mr Michael Malone
Director of Services for Roads, Transportation and Public Safety	Mr Michael O'Leary
Director of Services for Water and Environmental Services	Mr Joe Boland
Director of Services for Planning and Economic Development	Mr John Lahart
Director of Services for Housing, Community and Cultural Services	Mr Peter Minnock
Director of Services for Corporate, Human Resources and ICT	Mr Eamonn O'Sullivan
Head of Financial Services	Mr Thomas Hunter McGowan

Strategic Policy Committees – Membership

Water and Environmental Services

Cllr Paddy Kennedy (Chairperson)
Cllr Mark Wall
Cllr Frank O'Rourke
Cllr Fintan Brett
Cllr Micheál Nolan
Cllr Shane Fitzgerald (Leixlip T.C.)
Allan Shine (Business Sector)
Fiona Tutty (Environment)
Tom Malone (Agriculture/Farming)

Housing

Cllr Suzanne Doyle (Chairperson)
Cllr Anthony Larkin
Cllr Paddy MacNamara
Cllr Martin Miley Jnr
Cllr Senan Griffin
Cllr Ann Breen (Naas T.C.)
Liam O'Brien (Business Sector)
Joe Curran (Community/Voluntary)
Dick Maher (Trade Union)

Community and Culture

Cllr Seamus Langan (Chairperson)
Cllr Ivan Keatley
Cllr Fiona O'Loughlin
Cllr Seamie Moore
Cllr Francis Browne
Cllr Ger Dunne (Naas T.C.)
Sinead Heneghan (Business Sector)
John Hayden (Community/Voluntary)
Triona Muldoon (Environment)

Transportation

Cllr Kevin Byrne (Chairperson)
Cllr Pádraig McEvoy
Cllr Colm Purcell
Cllr Richard Daly
Cllr Willie Callaghan
Cllr John Lawler (Athy T.C.)
Miriam O'Brien (Business Sector)
James Earle (Community/Voluntary)
Sean Darcy (Business Sector)

Planning and Economic Development

Cllr Darren Scully (Chairperson)
Cllr Tony O'Donnell
Cllr Liam Doyle
Cllr Brendan Weld
Cllr John McGinley
Cllr Damien Molyneaux (Newbrdige T.C.)
Robert Mehigan (Business Sector)
David O'Reilly (Business Sector)
James Cotter (Community/Voluntary)

Membership of Council Committees

Affixing of Seal

All Council Members

Audit Committee

Cllr John McGinley

Cllr Senan Griffin

Cllr Liam Doyle

Local Traveller Accommodation

Consultative Committee

Cllr Mark Wall

Cllr Seamus Langan

Cllr John McGinley

Cllr Paddy Kennedy

Cllr Paddy MacNamara

Twinning Committee

Cllr Liam Doyle

Cllr Paddy Kennedy

Cllr Frank O'Rourke

Cllr Fintan Brett

Protocol and Procedures Committee

Cllr Senan Griffin

Cllr Suzanne Doyle

Cllr Tony O'Donnell

Cllr Ivan Keatley

Cllr Mark Wall

Cllr Willie Callaghan

Cllr Fiona O'Loughlin

Cllr Kevin Byrne

Cllr John McGinley

Cllr Anthony Larkin

Finance Committee

Cllr Liam Doyle

Cllr John McGinley

Cllr Ivan Keatley

Cllr Paddy Kennedy

Cllr Seamie Moore

Burrin Joint Drainage Board

Cllr Ivan Keatley

Local Rural Water Monitoring Committee

Cllr Seamus Langan

Cllr Pádraig McEvoy

Cllr Ivan Keatley

Cllr Martin Miley Jnr

Cllr Francis Browne

Barrow Drainage Board

Cllr Richard Daly

Cllr Mark Wall

Membership of External Bodies

Vocational Education Committee

Cllr Willie Callaghan
Cllr Martin Miley
Cllr Paddy Kennedy
Cllr John McGinley
Cllr Francis Browne
Cllr Brendan Weld
Cllr Micheál Nolan
Cllr Richard Daly
Cllr Ivan Keatley

County Development Board

Mayor (ex-officio member)
Cllr Suzanne Doyle
Cllr Darren Scully
Cllr Kevin Byrne
Cllr Seamus Langan
Cllr Paddy Kennedy

County Joint Policing Committee

Cllr Mark Wall
Cllr Ivan Keatley
Cllr Senan Griffin
Cllr John McGinley
Cllr Brendan Weld
Cllr Seamus Langan
Cllr Tony O'Donnell
Cllr Suzanne Doyle
Cllr Darren Scully
Cllr Paddy MacNamara
Cllr Fintan Brett
Cllr Frank O'Rourke
Cllr Pádraig McEvoy
Mayor ex-officio member

County Kildare Failte

Cllr Martin Miley
Cllr Senan Griffin
Cllr Pádraig McEvoy
Cllr Micheál Nolan
Cllr Paddy MacNamara

Irish Public Bodies Mutual Insurance

Cllr Micheál Nolan

Kildare Heritage Town Co Ltd

Cllr Tony O'Donnell
Cllr Suzanne Doyle

Athy Investment, Development and Employment Forum

Cllr Richard Daly
Cllr Ivan Keatley

Mid-East Regional Authority

Cllr Pádraig McEvoy
Cllr John McGinley
Cllr Martin Miley
Cllr Brendan Weld
Cllr Micheál Nolan
Cllr Senan Griffin
Cllr Francis Browne
Mayor (ex-officio member of EU
Operational Committee)

Athy Heritage Company Ltd

Cllr Richard Daly

Kildare County Enterprise Board

Cllr Brendan Weld

Cllr Fintan Brett

Cllr Willie Callaghan

Cllr Liam Doyle

Leixlip Amenities Centre

Cllr Anthony Larkin

Cllr Colm Purcell

Cllr John McGinley

Kildare Heritage Forum

Cllr Francis Browne

Cllr Micheál Nolan

Cllr Seamie Moore

South Eastern River Basin District Advisory Council

Cllr Suzanne Doyle

Cllr Micheál Nolan

Board of the Meath Foundation

Cllr Brendan Weld

Eastern River Basin District Advisory Council

Cllr Seamus Langan

Cllr Pádraig McEvoy

Athy Investment, Development and**Local Authorities Members Association**

Cllr Senan Griffin

Cllr Richard Daly

Association of County and City Councils

Cllr Colm Purcell

Cllr Fintan Brett

Cllr Liam Doyle

Kildare Community Network Company

Cllr Anthony Larkin

Cllr Tony O'Donnell

Cllr Micheál Nolan

Southern Eastern Regional Assembly

Cllr John McGinley

Cllr Senan Griffin

Regional Drugs Taskforce

Cllr Paddy Kennedy

Dublin Mid-Leinster Regional Health Forum

Cllr Fiona O'Loughlin

Cllr Francis Browne

Cllr Seamus Langan

Cllr Ivan Keatley

Cllr Anthony Larkin

Ballymore Eustace Community Liaison Committee

Cllr Mark Wall

Cllr Willie Callaghan

Cill Dara ar Aghaidh Teo

Cllr Tony O'Donnell

Cllr Seamie Moore

Cllr Mark Wall

**Social and Environmental Panel for the
Midlands District of Coillte Teoranta**

Cllr Pádraig McEvoy

**Drehid Landfill Site Community
Liaison Group**

Cllr Fiona O'Loughlin

Cllr Brendan Weld

**Arthurstown Landfill Facility Community
Liaison Committee**

Cllr Fintan Brett

Cllr Paddy MacNamara



Meetings Held During 2011

18 Full Council Meetings

- 11 monthly meetings
- 1 budget meeting
- 5 special meetings
- 1 annual meeting

58 Area Meetings

- 10 Athy Area Committee meetings
- 11 Clane Area Committee meetings
- 12 Kildare Area Committee meetings
- 13 Celbridge Area Committee meetings
- 12 Naas Area Committee meetings

28 Other Meetings

- 8 Finance Committee meetings
- 5 Protocol Committee meetings
- 5 Audit Committee meetings
- 7 Twinning Committee meetings
- 3 Local Traveller Accommodation Consultative Committee meetings

The following meetings were also held during the year:

- 10 Corporate Policy Group meetings
- 5 Planning and Economic Development SPC meetings
- 4 Water and Environmental Services SPC meetings
- 4 Transportation SPC meetings
- 3 Housing SPC meetings
- 3 Community and Cultural SPC meetings

Customer Care

Kildare County Council aims to provide the highest quality service in an economic, efficient, effective and equitable manner to all our customers. We continue to operate a number of customer focused services and seek to improve the services offered on an ongoing basis. We ensure the highest standards of sustainability are applied throughout Kildare County Council. We encourage and develop the full potential of a committed and talented workforce through training, delegation and partnership working arrangements. We aim to facilitate maximum community involvement through consultation and information provision and to provide information that is clear, timely, complete, accurate and available at defined points of contacts and meets the requirements of people with specific access/support needs. Kildare County Council at all times ensures the optimum use of information and communication technology. Kildare Local Authorities Customer Action Plan 2011 – 2014 was published in 2011 and is available on our website.



Accessibility

National Accessibility Week 2011 took place from 28 November to 2 December; the theme of the week was 'Park Right'.

National Accessibility Week was supported and promoted in Kildare by APCOA Parking Ireland Ltd., who provide a parking management service on behalf of the council in the towns of Kildare, Newbridge, Celbridge and Leixlip.

To mark Local Authority National Accessibility Week there were a number of initiatives which took place within the county including:

- Schools poster campaign
- Meeting of Kildare Network of People with Disabilities Ireland
- Issuing of flyers with motor tax documentation

- Media awareness campaign
- Colouring competition

Kildare Local Authorities continue to work with people with disabilities and their representatives to improve accessibility to local authority services.

Arts

Arts Plan Review

As Making Inroads: An Arts Development Plan for Kildare County Council 2006-2011 was in its final year, the Arts Service undertook an extensive review of arts activity over five years. Key milestones were achieved over the lifespan of the plan including;

- Arts and Health Strategy
- Youth Arts Strategy
- Public Art Policy

As set out in the plan, significant ‘inroads’ were made in further developing partnership programmes with agencies such as the Health Service Executive, Foróige, National University of Ireland, Maynooth, Filmbase Ireland, Practice.ie

The Creative Well

The Creative Well Art programme sought to develop a new approach to

supporting wellbeing and mental health through the arts and within the context of local communities. A pilot project took place in Naas and was supported by Health Service Executive Kildare, West Wicklow Mental Health Services, Health Service Executive Health Promotion, Kildare County Mental Health Association and Kildare County Council.

Kildare Readers Festival

Providing some 'fringe' events for the Kildare Readers Festival, the Arts Service hosted Plot1/Ceapach1, an exhibition by Monica De Bath inspired by the West Kildare bogland. Furthermore, artists were invited to participate in a KRF:1 Artist Notebook project, whereby artists are invited to fill a notebook in a creative way. Fifty notebooks brimming with drawings and writings were then donated to Kildare County Council to become part of a permanent touring collection.



Kildare Readers Festival 2010 in The Osprey Hotel in Naas



Presentation of certificates to graduates of The Laban Guild Dance Leaders Course, by
Mayor of Kildare Micheál Nolan

Platform4 Audio and Digital Media Studio – Re-launch

The upgraded Platform4 studio at Leixlip Library was re-launched in March 2011. Facilities now include a fully equipped digital media film editing studio as well as the audio recording studio. The studio will be an essential tool to aspiring/emerging filmmakers and digital artists in Kildare.

Platform5 Battle of the Bands

Annual competition to select emerging music acts from County Kildare to play at the Oxegen music festival. In 2011, 12 bands were short-listed to take part in a competition over three weeks to choose two acts to play at the Oxegen music festival. Judged by engineers from the Platform4 Audio and Digital Media Studio and MCD, this competition gives great coverage to new and emerging bands from County Kildare.

Support for NUI Certificate in Youth Arts

Kildare Arts Service in partnership with NYCI offered Stephen O'Leary, from Foroige, Derrinturn, a full grant towards attending the NYCI Certificate in Youth Arts, accredited by NUI, Maynooth.

Practice.ie – National day and Kildare regional group

In association with Kidsown publishing partnership, the first annual Practice.ie national networking day for artists was held in CAKE Contemporary Arts Centre in the Curragh Camp. The day consisted of presentations from artists as well as group discussions with artists from Kildare and beyond. Members of the newly formed Practice.ie Kildare regional group were in attendance. The function of the regional group is to document arts practice with children and young people in Kildare and to develop training and workshop opportunities for artists.

Stories for the Ear - Volume 2

Curated by playwright Neil Donnelly, the second volume of aural short stories by local writers was produced. The compilation was launched at the Kildare Readers Festival by Tom Hickey.

Thanatos as Muse? Schubert and Concepts of Late Style

International festival, led by the Music Department NUI, Maynooth held in October was supported by the Arts Service. This three day event centred in Schubert's late style. The event included a master class and concert with pianist and Lieder accompanist Graham Johnson.

Kildare Dance and Movement Summer School

A special addition to the Kildare Dance and Movement Summer School at NUIM in July was the inclusion of a day dedicated to dance and older people

including a showcase of work by older dancers.

Here I am World

Four emerging filmmakers under the guidance of film mentor Peter Kelly, devised, shot and edited a 15 minute documentary film 'Here I am World' about the Kildare Laban Dance Summer School in 2011. The film was premiered in November in Riverbank, Newbridge at the Laban Guild Dance Leaders Course graduation.

Culture Night

Participation in the second Culture Night event increased by 50%, compared to its' inaugural year in 2010. Arts and cultural organisations opened their doors and provided events free of charge, which took place in September with over 50 events countywide.



'Joy to the World'

The Courthouse in Kildare Town was transformed with 'Joy to the World', a seasonal exhibition of cribs and artefacts which took place in December. This enchanting exhibition featured on RTE's Nationwide.

Riverbank Arts Centre

Box office attendance at Riverbank Arts Centre continued to grow during 2011. They announced the arrival of digital cinema, providing a true cinema

experience with top sound and picture quality to rival any commercial cinema. The dedicated childrens arts space was launched with childrens art exhibitions, video projections, small performances and more. A fantastic line up of events took place, which included Jack L, Eddi Reader, Frankie Gavin and De Dannan, Eleanor Shanley, Frankie Lane, Mick Hanly, Jape and the National Chamber Choir. Theatre lovers were presented with Beckett, Hamlet, Philadelphia Here I Come, Silent, a new play from Fishamble and Pat Kinevane and a Dear Frankie production.

Grant aid, awards and opportunities

€ 44,000 was provided in grant aid and award opportunities for artists and community groups engaging in arts programmes including Youth Arts, Arts in Education, Recording Bursary Awards, CD Lewis Literary Bursary Award and Emerging Visual Artists Solo Exhibition Bursary Award. Further funding was given to important arts resource organisations such as the Leinster Printmaking Studio in Clane.



Kildare Library Service

“A library is a public space where things are allowed to happen, where new events and projects can be encouraged and supported in a spontaneous, organic, community-driven way that does not require previous experience, or qualifications or pages of forms, or a grant application, or a marketing strategy or a business plan.”

Oisín McGann 2011

Key Indicators

Number of Libraries	15
Libraries with outdoor play facilities	2

Number of items loaned	714,532
Public internet access sessions	47,893
Book requests fulfilled	38,333
Increase in class visits	135%



The following library service objectives were delivered during 2011:

- New library in Kilcock opened its doors in late June 2011; the library has proved a great success and has seen issues increase by 400%.
- Continuing Kildare County Council's Access Implementation Plan, works have progressed at Naas Library (dedicated accessible youth space) and Maynooth Library (accessible public toilets and upgrade).
- Conservation works were completed at Local Studies and Archives, Newbridge.

- New technologies introduced: nine libraries offer self-booking computer software and three branches offer a self-service issuing facility.
- A text messaging service has been rolled out countywide to notify borrowers of events, requested books and book club meetings.
- The library service review was undertaken and delivered in 2011. The new service and hours aim to meet the changing needs of communities by increasing the amount of programmed events and activities for all ages e.g. book clubs, art classes, parent and toddler groups, IT classes, lectures, local history clubs, school holiday workshops for children. The introduction of our new scheduled time will allow us to maximise the use of our libraries by all the community and will allow the service to expand our existing popular programming services.
- An extensive marketing campaign was undertaken following from the library service review and has resulted in substantial increases in membership and library activity; there are currently 41,581 library members.
- 'eBooks' are now available to members on the library website for digital lending; this offers a collection of approximately 5,000 items that can be uploaded to laptops, Ipods and MP3 Players.
- Kildare is one of the first Irish library authorities to offer an online language learning programme BYKI, which delivers free courses in up to 90 languages.
- Inclusive programmes such as online learning projects, countywide Multi-Cultural Events, Bealtaine Programmes, Culture Night,

Community Exhibitions, author visits and musical events proved very successful in 2011.

- Kildare Library and Arts Services in partnership with NUI Maynooth are delivering Part V of the successful programme 'Maynooth Film for All'.
- The library service ran a series of workshops for teachers and parents which followed from the success of 'Toys, Technology and Training Project' facilitated by an expert in this field.
- The introduction of the Touch Type Read Spell project in Naas, Celbridge and Leixlip libraries was a significant step in our efforts to ensure equal access to all. Members of staff were trained in order to provide this service to children from local schools who have spelling and reading difficulties, dyslexia and other learning difficulties.
- Children's Book Festival 2011 hosted 200 library events with over 9,000 children participating which represents an increase of over 40%.
- The library service hosted the second 'Kildare Readers Festival' in Riverbank, Newbridge. Events included author readings, interviews and signings with such names as Bee Rowlatt, Peter Murphy, Kevin Barry, Arlene Hunt, Laura Jane Cassidy, Cathy Kelly, Dermot Bolger, Carlo Gebler and Peter Sheridan. Nearly 800 people attended this hugely successful weekend.
- A new departure of library programming was a series of curriculum centered events for secondary and primary schools which included Shakespeare workshops, digital media workshops and historical research skills events.

- The American version of *Who Do You Think You Are* TV series contacted the Kildare Research and Local Studies department in 2010 regarding material housed in archives. The Local Studies Librarian was able to provide valuable assistance which resulted in a visit of the TV crew and celebrity Rosie O'Donnell to Co. Kildare – the programme aired in the US on 18 February 2011 and in March on R.T.E. and aired again in October/November in the U.K. providing a strong positive image of County Kildare and the research capabilities.
- In Newbridge library the Cill Dara Writers Circle and the young adult 'WriTeen Scene' continued to meet monthly. Newbridge library was honoured to be presented with a framed copy of their Audio Anthology of Stories on Culture Night.
- Kildare Library Service published "Do Fish Wear Pyjamas?". A collaborative publication between Local Studies Librarian Mario Corrigan and the classes from Scoil na Mainistreach, Kildare and Scoil Bhride Naofa, Kildare.
- One Book, One Town – Kildare, a successful community reading project, attracted over 400 participants. A variety of events took place around the book 'Tom Crean, Ice Man'.



Community and Culture 2011

2011 has been a busy year for the community and culture department with a variety of projects being undertaken under the auspices of the County Development Board. The projects undertaken have shown strong interagency collaboration and partnerships.

K-Partners 2011

K-Partners is a coalition of staff from Kildare County Council and hosted organisations in community and culture services and was established in 2010. The overall aim of K-Partners is to maximise collective knowledge, contacts and expertise in order to plan strategically and co-ordinate service delivery in an integrated, efficient and effective manner.



The K-Partners team includes:

- Kildare Sports Partnership
- Parks Department
- FAI
- Community and Culture
- Kildare Integrated Services Programme
- Housing Department, Kildare County Council
- The Arts Office
- RAPID Athy
- Library Services
- Leisure Services
- Children's Services Committee
- Kildare Age Friendly County Programme

Many projects were run by K-Partners in 2011 but the project of most significance was the Sustaining Communities Project in Rathangan which was funded by the Department of Environment, Community and Local Government.



Programmes run in Rathangan included:

- Revisiting Old Habits – The Joy of the Written World
- FAI Soccer Skills Training Programme
- Kildare Sports Partnership – Increasing participation in sport and physical activity
- K-Fit – Healthy Communities Programme

The overall programme brought people together in a positive way using a holistic, healthy and community building approach, working with local communities including children and young people. The projects were supported by the wider community in Rathangan, particularly the residents associations and schools.



Newbridge Sports and Leisure Centre

Newbridge Sports and Leisure Centre is in operation now for almost 29 years providing the local community with an invaluable facility.

Over the past number of years the Sports Centre has gone through a number of developments to improve the facilities we offer to customers, the biggest improvement was in 2008/2009 where the facility underwent a € 2.3 million re- development to modernise and introduce even greater diversity of function, to ensure that we continue to serve the greatest possible percentage of the Newbridge population and surrounding areas.

The Sports Centre now boasts one of the largest gyms in County Kildare, with state of the art equipment and IFI approved equipment. A wide range of fitness classes for all levels of fitness, including personal programmes provided by fully qualified instructors, indoor and outdoor pitches, room hire, sauna and steam rooms, fitness testing facilities, party area, reception and coffee dock. Newbridge Sports and Leisure Centre is the only publicly accessible gym facility in the Newbridge area which is accessible on both a membership or pay as you go system.

We are centrally located in close proximity to the town centre, this ideal location means that it is within easy walking distance of the town and public transport, we also provide a large car park for our customers.

The Sports Centre provides a much needed community offering and is home to numerous voluntary sports and community clubs. Here are some of the community groups we cater for, KARE, FAS, KSP, Special Olympics, Jumping Jelly Beans. We also run a number of charitable events during the course of the year to raise vital funds for charity. Newbridge Sports and Leisure Centre is a dedicated sporting facility for all activities and is also a venue for the VEC and Gaelscoil for sports and inter school competitions.

Newbridge Sports and Leisure Centre is proud to have been awarded the White Flag Award every year for the past 10 years highlighting our excellent standards within our facility.



Parks Programme 2011

The following project and works were completed in 2011;

- Tree planting programme was carried out at various towns in the county.
- A tree pruning and tree removal programme was carried out based on requests received from around the county.
- A spring bulb planting programme was carried out in towns including Naas, Kilcock, Athy, Timolin and Newbridge.
- Grass maintenance was carried out in Maynooth, Leixlip, Celbridge, Kilcock, Naas, Newbridge, Kildare and Monasterevin. Landscaping was carried out on Johnstown roundabout and Collinstown roundabout in Leixlip. A policy for the sponsorship of roundabouts in the county was developed in conjunction with the Transportation Department. It is hoped to progress the implementation of this in 2012.
- A masterplan for the development of the Liffey Valley Linear Park was completed in conjunction with Newbridge Town Council. Similarly, a boardwalk was constructed to link the existing paths to the Athgarvan Road.
- The pilot allotment scheme in The Wonderful Barn continued during 2011 and all allotments on the site were rented out.
- A historic landscape report of the grounds around The Wonderful Barn was also commissioned this year which will inform future work in the restoration of the grounds around the house and folly.

- Conservation works were carried out to the Toll Collectors House at Leixlip Spa. This work was part funded by the Heritage Council. A survey of the mosses on the site was also carried out and further scrub removal was completed on the site.
- Assistance was also given throughout the year to internal departments on landscaping issues.
- Financial and technical support to residents associations and Tidy Town Committees in the county.



Playgrounds

A new playground was opened in Kilcullen at Kilcullen Community Centre, this caters for children from 1- 12 years old. Regular maintenance of the established playgrounds continued, there are now 11 playgrounds in the county.

Special Play Initiatives

Work continued on the creation of a children's play space within Riverbank Arts Centre. A number of exhibitions and artists were engaged during the year to develop the space.



FAI Development Programme 2011

Late Night Leagues – Naas

The Late Night League came about through discussions between Garda Jillian Morris and Pat Behan, FAI Development Officer for Kildare, about engaging with young people 16+ in Naas. Late Night Leagues have been operating in Dublin since 2006 and have been a huge success (both quantitatively and qualitatively), and this was felt an avenue to be explored in Naas, with An Garda Síochána recognising the value of football as a community policing tool.

Open to young people aged 16-21, this diversionary programme took place during prime anti-social hours on Friday nights and we ran two leagues over a total of 10 weeks with 54 players participating.



The leagues have been organised with assistance from Naas Town Community Warden, Julie Duffin, who not only has time to manage one of the teams in the league, but has spread the word amongst the youth of Naas and has been the driving force in securing sponsorship from local business.

After the first League had finished, Garda Jillian Morris was transferred, so Garda Nicola Tierney from the Community Policing Unit stepped into her shoes.

Both of these Gardaí were instrumental in securing funding from the Court Fine System that paid for the hire of pitches and trophies. This was crucial, as the main cost of this project was now met.



The first league kicked off in late May 2011, for 6 weeks and the second in November 2011 for 4 weeks. The leagues ran on a Friday night between 9pm and 10pm at Naas Sport Centre on two of the 5 a side astro pitches.

Not only did we have the players during these nights, but we also had a large number of supporters attending each week despite the weather conditions being less than favourable on more than one occasion.



Local businesses provided invaluable sponsorship with 4 providing kits for the teams, many others providing spot prizes and food for the two presentation nights that were held after the leagues were finished.



Talking to the local Gardai and stakeholders, anti social behaviour and other various incidents were down on the nights that the Late Night Leagues were running.



These Late Night Leagues also help establish better relationships between An Garda Síochána and the players and open up informal channels of communication, thus improving community relations in this area.

The local media were invited to both presentation nights and we had an article in "The Kildare Times" and Kildare TV website did a piece.

Ballymakealy Soccer Skills Training Programme

In March, a Soccer Skills Training programme was run in Ballymakealy housing estate in Celbridge. With the help of local woman, Bridget Moore, 8 youths in the area aged 17-19 years old were asked to get involved in the coaching of the young kids in the area. Funding for this programme was provided by K-partners which allowed the 8 lads to attend an FAI coaching course, Kickstart 1 and receive official certification.

The Kickstart 1 is an introductory coaching course and the first step on the coaching ladder. It is designed to assist coaches to introduce children to fun soccer games and FUNdamental movement skills in a well-structured, stimulating and safe environment. The objectives of the course are to provide coaches with the ability to plan, organise and implement a coaching session and to identify the stages in the development of young players at the FUNdamental phase.

We then held 2 hour sessions every Saturday for 8 weeks in the Mill indoor hall where the 8 boys practiced the coaching skills they obtained in the course, working with 25 children aged between 8-12 years, from the Ballymakealy housing estate. The children practiced their dribbling, passing, shooting, etc. through fun games under the direction of the coaches. The sessions would always finish with a mini tournament which the children always looked forward to. The children were very well behaved and really looked up to the coaches, listening to their advice and encouragement. The coaches expressed the enjoyment they got from the sessions and felt recognised in the area as the children's coach, giving them a sense of pride and importance in their community. The funding received was used to buy footballs, cones and bibs for the estate to allow the sessions to continue with the help of the coaches. We also rewarded the coaches for their voluntary work every Saturday morning by presenting each of them with a FAI tracksuit.

At the end of the 8 sessions, we held a party in the downstairs room in the Mill, for all involved in the programme and presented the children with certificates for their attendance and had food, drinks and music for all. Bridget Moore was a big help in encouraging the 8 youths to get involved in the first place but also helped with the organisation of the programme and getting the local children involved. The football equipment bought for the area has been left in the community centre in the housing estate and can be used by any of the children when they are out playing or can be used by the coaches to run more soccer training sessions with the children. It was a great success and we would hope to run a similar, sustainable project like this in other housing estates around the county to help decrease anti-social behaviour and get more young people involved in football, whether it's playing or coaching.

Kildare Sports Partnership

It was a busy year for the Kildare Sports Partnership, following its launch on 18 January 2011. The partnership worked with various organisations, groups and agencies to increase participation in sport and physical activity within the county.

The main focus was on specific target groups, namely, women and teenage girls, older people, people with disabilities, the unemployed and people from designated areas of disadvantage. Some of the initiatives and projects that happened included;

- Buntús Start
- Slí na Sláinte routes in Kildare Town and Derrinturn
- Operation Transformation Walk Day
- Rathangan Project
- Sprocket Rocket Cycling Programme for schools
- Code Of Ethics and Child Protection Programme
- Mum and Me Camogie Programme
- Summer Camps in association with Kildare Youth Services

- FitWalk Programme in Kildare Town
- Club Development Grant Scheme
- Club Development Seminar in Croke Park
- Donadea Forest 10K
- Sportstaster Programme for teenage girls
- Leinster Loop Cycling Event
- National Trails Day
- Aqua Aerobics for Over 55's
- Recreational Angling Ireland in conjunction with the School Completion Programme and much more

Two of Kildare Sport Partnership other projects included;

Inclusive Physical Activity Leaders Course for People with Disabilities

As part of efforts to try and maximise the impact that Kildare Sports Partnership have in the area of people with disabilities, we developed an Inclusive Physical Activity Leaders Course with the help of Mr. John Doran MA (Can). BA Hons. CehfT.

The learning outcomes from the course were to prepare volunteer leaders;

- To become critical thinkers and problem solvers as they develop the knowledge and skills to provide meaningful, inclusive physical activity for children and young adults with special needs.
- To prepare and plan individualised and group physical activity programmes for areas such as: movement skills and sports, games design, health-related fitness and recreational activity.
- To form a baseline understanding of the health related components of fitness.
- To apply the principles of training to health and fitness related physical activity.
- To implement safe, effective physical fitness assessments.
- To develop strategies and techniques to increase awareness of varying

abilities, foster more positive attitudes of peers, and increase advocacy efforts aimed at inclusive physical activity.

- To overcome barriers associated with inclusive exercise programming.

The first group to benefit from the course was the “The Jumping Jelly Beans Club” which is an organisation, based in Milltown, Newbridge and Naas where children and teens with special needs are welcomed to join their peers and participate through sport and physical activity. The four day course, which started 27 June 2011 took place in Milltown GAA Club when over 24 parents and teenage volunteers were trained to the standards necessary, allowing “Jumping Jelly Beans” to expand. At present there are 50 children with disabilities involved in the organisation along with 50 volunteer peers. There is also a large list of people waiting to join the group and the “Inclusive Physical Activity Leaders Course” will now allow “Jumping Jelly Beans” to expand and at least double their participation in the short term.



Some of the participants taking part in the ‘Inclusive Physical Activity Leaders Course for People with Disabilities’ Course.

Sports Taster Camps in conjunction with the School Completion Programme

This programme aims to introduce sports and physical activity to children that are not usually offered disciplines such as swimming, gymnastics, badminton etc as well as the mainstream sports. It is aimed at children at risk of early school leaving, however it will also promote the inclusion of children from disadvantaged socio-economic backgrounds and ethnic minorities. Camps were run over a four day period at Easter and a six day period in the summer using local volunteers who have completed Active Leadership Training as tutors. 350 children took part in the years activities in Athy, The Curragh Camp and Kildare Town.



European Year of the Volunteer

To celebrate European Year of the Volunteer Kildare County Council in conjunction with Kildare Community and Voluntary Forum, the Irish Red Cross and Kildare Volunteer Bureau, an oak tree was planted by Mayor of Kildare Micháel Nolan prior to Kildare County Council's Community Awards ceremony on 26 October 2011. The oak tree was planted to recognise the volunteers who enrich the communities in Kildare with their tireless work.



Kildare Age Friendly County Programme 2011

The aim of the Kildare Age Friendly County Programme is to make Kildare a great place in which to grow old. The programme is a direct response to the demographic change which will see a significant increase in the population of older people over the next 20 years. The programme is supported by the Kildare Age Friendly County Alliance which comprises Kildare County Council, VEC, An Garda Síochána, HSE, Leader Partnership, the Ageing Well Network, INTEL, and Engage Kildare. The Alliance is chaired by the County Manager.

Throughout 2011, older people from all over Kildare were consulted about what works well for them in the areas of housing, environment, health, transport, safety and security. They identified the gaps in service provision and made recommendations for future planning and development. Consultation was also carried out with service providers, agencies, business people, organisations and citizens committed to developing services and supports which create positive opportunities and outcomes for older people. One of the most significant consultations with older people took place on 21 March 2011 in the Killashee House Hotel in Naas with an attendance of over one hundred older people from around the county (see picture below).



The issues raised and the recommendations made at the various consultations formed the basis for the Kildare Age Friendly County Strategy 2011-2014 which was launched by the Mayor of Kildare, Micháel Nolan on 18 November 2011 (see picture below)



Pictured at the launch of the Kildare Age Friendly County Strategy: From L: Anne Connolly, Director, Ageing Well Network, Anna May McHugh, Champion KAFC Program, Brigid Butler, Programme Manager, KAFC Programme, Michael Malone, County Manager, Mayor Micháel Nolan, Michael O Muireachartaigh, Denise Croake, Older Voices Kildare, Peter Minnock, Director of Services

Engage Kildare

The Kildare Age Friendly County Programme in conjunction with Older Voices Kildare established an Older Person's Forum which came together for the first time on 10 August 2011 as EngAGE Kildare.

EngAGE Kildare will provide representation at local, regional and national level, provide and promote opportunities for social inclusion, work in partnership to reduce discrimination, promote respect, value and visibility, and pro-actively engage across generations in the promotion of inclusive communities.



Baseline Study

A Baseline Study of a representative sample of older people in the county was undertaken in October 2011 to ascertain people's views on various aspects of their lives. The study sought to establish the current level of satisfaction with services, facilities and other issues impacting on the lives of older people. The results of this study will be used as a tool to monitor the progress of the Kildare Age Friendly County Strategy.

Waste Management

Disposal and Recycling

In 2011, a formal business transfer agreement was signed for the transfer of the waste collection service to AES (Irl) Ltd. This decision was taken following detailed negotiations and financial considerations of all options. In 2011, Kildare County Council had approximately 18,000 households with each producing circa. 1 ¼ tonnes of waste annually. This adds up to a yearly total of 50,000 tonnes when private operators are included. The total dry recyclable material collected for processing in 2011 was 19,100 tonnes.

Recycling

The network of glass and can recycling banks around the county continues to provide the people of Kildare with a convenient way of recycling. Over 3,650 tonnes of glass and 31 tonnes of cans were recovered as well as over 450 tonnes of textiles.

A number of collections of Waste Electric and Electronic Equipment (WEEE) were organised for members of the public. This resulted in over 40 tonnes of electrical waste being recycled.

The council contracted out the operation of civic amenity sites at Silliot Hill, Kilcullen and at Gallows Hill, Athy to Oxigen Environmental Ltd during 2011.

In addition to the standard bring-banks for glass, aluminium cans and textiles, the range of materials accepted at the recycling centres is expanding as new outlets for materials are developed. The list below sets out the range of materials currently accepted:

Corrugated Cardboard

Greyboard

Newsprint

Magazines

Waste Paper	Plastics of Categories 1, 2 and 4 only
Glass Bottles	Flat Glass
Aluminium and Metal Cans	Scrap Metal
Clothes	Electrical Goods
Paints	Varnishes
Medicines	Chemicals
Aerosols etc	Waste Oil
Car Batteries	Recyclables Household Hazardous Waste

2,513 tonnes of waste was processed through the council's recycling centres at Silliot Hill and Athy, which represents a slight increase on the previous year. Public bring banks were maintained by the council at 43 sites around the county and these yielded a total of 3,651 tonnes of glass and 31 tonnes of cans. Battery collection facilities in schools, retail outlets and the two civic amenity sites continued to be a success. The battery collection scheme helps to prevent environmental harm and helps to educate people in the need for careful waste disposal.



Education and Awareness

During the year our Environmental Awareness Officer made 105 visits to schools, businesses and community groups (e.g. tidy towns) to create public awareness of waste issues and to promote good waste disposal practice in the community.

The Green Flag Campaign is helping in this effort; 80 of the county's schools had been awarded green flags by the end of the year and a total of 111 schools are registered for this distinction. The council acts as a facilitator for schools who wish to become involved in this programme and actively encourages all schools to join this project. The Green-Schools Programme is funded by all participating local authorities, including Kildare County Council, through an annual direct payment to An Taisce. In addition, the council provides materials and/or financial aid for appropriate projects for participating Green-Schools. As part of Kildare County Council's commitment to education in environmental matters, school tours of the Integrated Waste Management facilities at Silliot Hill and Athy take place on a regular basis during the school year.

The council has also been creating awareness of waste management and other environmental issues through its annual photographic competition. This competition, now in its tenth year offers people the opportunity to take photos of their local environment.

The council also supports environmental initiatives by community groups and Kildare local authorities through two schemes co-funded with the Department of Environment, Community and Local Government, namely the LA21 Environmental Partnership Fund and the Anti Litter Awareness grant scheme. The Environmental Partnership Fund scheme provided €30,000 to 31 projects ranging from providing construction of outdoor nature classrooms to projects on energy reduction. The Anti Litter and Anti-Graffiti Awareness Grant provided €21,400 to ten separate projects ranging from a litter photography competition to adopt a road scheme in Athy.

Tidy Towns

The council worked closely to support the tidy towns committees in Kildare in 2011. This support consisted of amenity grants, assistance with cleanups, the provision of bags and litter pickers. In addition, training was offered to groups protecting and enhancing local biodiversity. Further training was given in the form of three very successful seminars held in November 2011. Groups were given presentations by a tidy towns adjudicator, a tidy towns committee member and a professional training organisation on making successful applications as well as drawing up three year plans.



The Environment Section will be formally taking on the role of working with the tidy towns groups from 2012 as there are already many contacts in this area. It is hoped that this will help these groups continue their successful projects into the future.



Litter

The litter wardens are the visible face of the councils various litter prevention strategies and represent a considerable opportunity to increase public awareness of the litter problem and the council's response to it. The wardens' information activities include-

- Attendance at meetings of community groups, residents associations and tidy towns committees to advise on their activities and discuss any

litter-related problems.

- Ongoing informal contact with involved parties, which enables the wardens to take immediate action in relation to new litter blackspots, fresh incidents of illegal dumping, abandoned cars, etc.
- Visits to retail, industrial and commercial premises in the county to advise owners, occupiers and staff members of their responsibilities under the Litter Pollution Act.
- Meeting members of the public to discuss litter matters directly affecting them.
- Visits to schools to publicise their presence and to discuss litter issues with students.
- A two-man mobile environmental crew is employed to undertake a range of functions including clean-up of litter blackspots and illegal dumping, erection of “No Littering” and related signage and monitoring of recycling facilities for littering. The crew liaise closely with the litter warden service in responding to such incidents.



Unfortunately, education alone has not been sufficient to eradicate litter and the council has found it necessary to penalise offenders with 691 fines issued for litter offences in 2011.

National Spring Clean

The month of April was dedicated to promoting the National Anti-Litter Campaign – National Spring Clean. Tidy towns committees and residents associations received support through the provision of refuse and recycling bags, litter pickers, gloves and awareness raising of events taking place throughout the month.

Various programmes aimed at community groups and residents associations, including Amenity Grant Schemes, Pride of Place Initiatives, are available to assist local voluntary effort. These schemes allow for the provision of litter bins, street furniture, plants and shrubs, and the improvement of green areas. Council staff also assisted individual tidy towns groups in the participation process of the National Tidy Towns competition.



National Spring Clean Launch – Kilkea National School

National Tree Week

The council also provided 300 saplings to community groups during National Tree Week in March. On a cumulative basis, almost 4,000 trees have been planted in the county as a result of this scheme.

Roads, Transport and Public Safety

During 2011 the Roads, Transportation and Public Safety Directorate –

- delivered a programme for design and construction of local, regional and national roads subject to available finance
- provided a well-maintained public road network based on a minimum maintenance cycle of 10 years subject to financial and human resource constraints
- worked with the Road Safety Authority, An Garda Síochána and other agencies to promote road safety
- improved travelling times and road safety by implementing efficient and appropriate traffic management measures and by increasing the scale and capabilities of the councils traffic management centre subject to funding
- provided car parking facilities and regulated parking in towns and villages subject to available finances
- migrated the councils transport fleet to sustainable and renewable energy fuels as funding permitted
- maintained an area office structure to provide countywide access to the councils services and to ensure that adequate and relevant information is available in each office
- engaged in open consultation procedures to ensure broad representation for planned works
- ensured that county and town councillors are provided with timely information
- ensured that there is existing or planned infrastructure to service new development
- ensured value for money in the procurement of goods and services through the use of best practice and compliance with council, national and european procurement policies
- examined energy usage and work to minimise energy costs

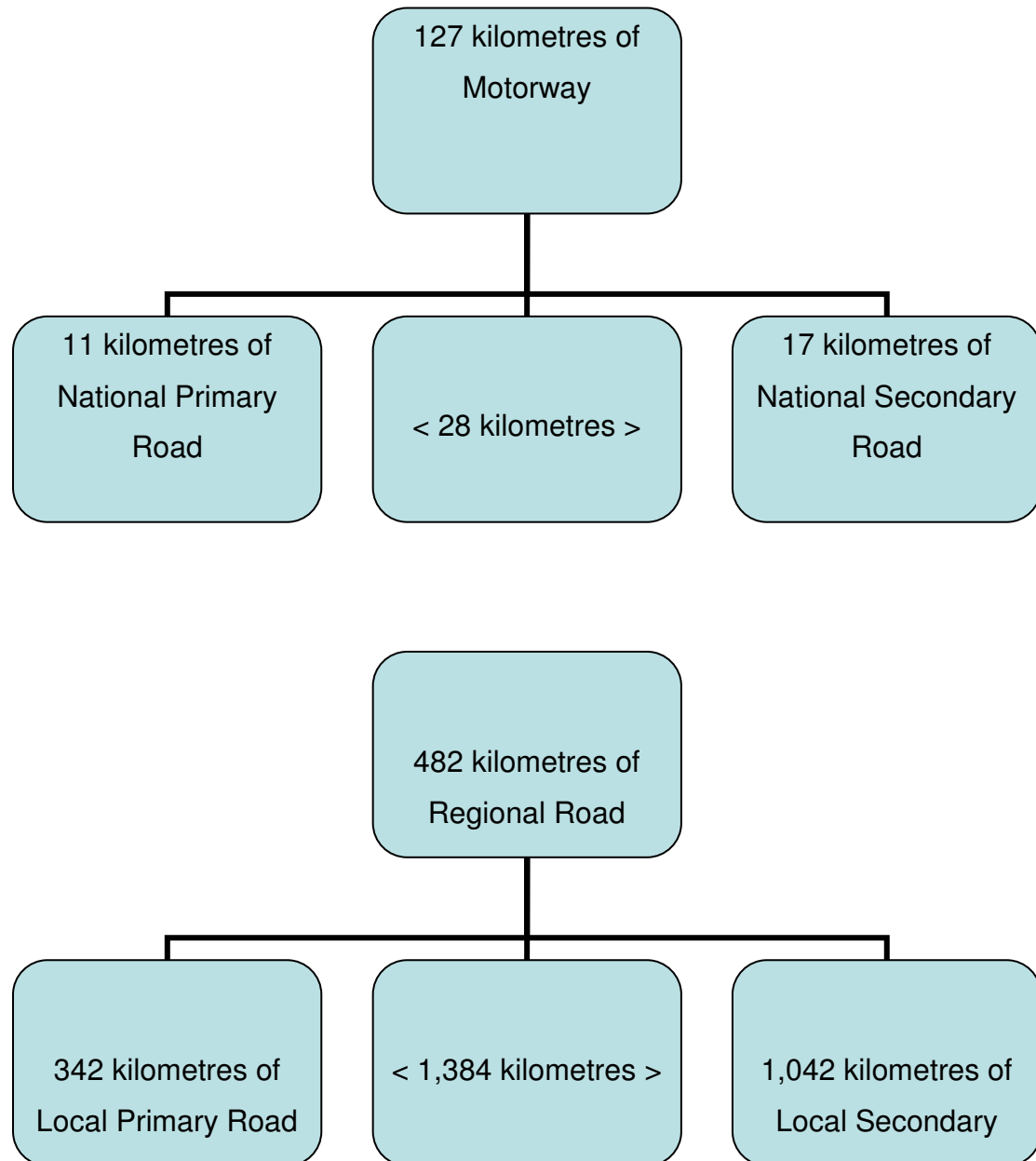
- promoted, developed and maintained Civil Defence as an effective volunteer-based organisation providing emergency response and community support services
- ensured the safety, health and welfare of all employees in the workplace and to comply with health and safety legislation



Portgloriam

Road Infrastructure

County Kildare has an extensive network of roads totalling some 2,021 kilometres and comprising –



This extensive and heavily-trafficked road network requires significant ongoing investment in maintenance and improvement by Kildare County Council in association with the Department of Transport, the National Roads Authority and the National Transport Authority.

In 2011 the level of funding available to maintain and improve the road network was, unfortunately, severely constrained due to the national and international recession. Nevertheless, as a result of strict and cost-effective management of available resources, it was possible to successfully undertake a significant programme of maintenance and improvement works.

State Grants of €30.5m + own resources of €21.5m = expenditure of €52m for 181 projects.

National Roads

County Kildare contains 155 kilometres of National Road viz;

- the M4 Motorway from Dublin to Kinnegad crosses the north of the county and carries traffic to Sligo, Galway, Castlebar and to the North West and West
- the M9 Motorway from junction 11 on the M7 Motorway to Waterford crosses the county from north to south from the M7 and carries traffic to Waterford, Kilkenny and to the South East
- the N78 National Secondary Road from junction 2 on the M9 Motorway to Kilkenny crosses the county from east to west from the M9 to Athy and then south to Kilkenny and carries traffic to Kilkenny and the South East
- the N81 National Secondary Road from Dublin to Tullow crosses parts of the eastern boundary of the county and carries traffic to Carlow, Wexford and to the South East

The National Roads Authority funds the maintenance and improvement of motorways and national roads within the county.

Funding provided in 2011 = €13.7m.

National Road Projects

Bridge Management – during 2011 the Kildare National Roads Design Office continued implementation of the National Roads Authority Bridge Management System for inspection and rehabilitation of national road structures;

Road Safety – during 2011 the National Roads Authority Regional Road Safety Engineer continued to identify safety schemes for national roads and to assist with the identification of Low Cost Safety Schemes for regional roads;

National Road Signs – during 2011 the Kildare National Roads Design Office continued a programme of Sign Scheme design and approval and to develop contracts for Sign Schemes;

N7 Newlands Cross Interchange Scheme – during 2011 the National Roads Authority procured the main contract for this scheme and the Kildare National Roads Design Office continued ongoing land acquisition and accommodation works;

N81 Tallaght to Hollywood Cross – during 2011 Kildare National Roads Design Office continued the ongoing Route Selection Process;

M7 Naas/Newbridge By-Pass Upgrade – during 2011 the Kildare National Roads Design Office continued ongoing design within the existing fencelines and progressed development of the Environmental Impact Statement;

Residual Completion Works – during 2011 Kildare National Roads Design Office continued ongoing residual completion works and ongoing residual

completion procedures on the M9 Carlow By Pass, the M9 Kilcullen to Carlow and the M7 Monasterevin By Pass projects;

Maintenance – during 2011 Kildare County Council continued implementation of an ongoing programme of maintenance, resurfacing, winter maintenance and route lighting on national roads in the county.

Maintenance and Improvement of Regional and Local Roads

There is an ongoing programme of general maintenance and improvement of the 1,866 kilometres of regional and local roads in the county which include strengthening and realignment works, repairs to potholes, footpaths, gully cleaning, maintaining and replacing road signs and nameplates, grass cutting, verge trimming and the renewal of road markings and delineators.

Restoration Improvement

A multi-annual programme of strengthening works which, in 2011, comprised -

19 schemes on regional roads with a length of 15,014 metres and an area of 97,861 square metres.

33 schemes on local roads with a length of 33,691 metres and an area of 172,325 square metres; i.e. a total of 52 schemes with a length of 48,705 metres and an area of 270,186 square metres.

It should be noted that as a result of the Government Jobs Initiative an extra €1,709,441 allocation was received from the Department of Transport in respect of this programme, i.e. a total revised provision of €6,036,140.

Restoration Maintenance

Surface dressing of roads currently in good condition which, in 2011, comprised -

9 schemes on regional roads with a length of 13,320 metres and an area of 77,210 square metres.

37 schemes on local roads with a length of 52,475 metres and an area of 227,004 square metres; i.e. a total of 46 schemes with a length of 65,786 metres and an area of 304,214 square metres.

It should be noted that as a result of the royal visit an extra €122,808 allocation was received from the Department of Transport in respect of this programme, i.e. a total revised provision of €1,531,808.

Non National Road Projects

R747 Ballycore Bridge – construction of this scheme was completed in 2011;

R402 Enfield/Edenderry Improvement Scheme – land acquisition proceeded throughout the year and notices to enter were served. Advance works (fencing and site compound) were completed and archaeology works were substantially completed with environmental surveys to follow. The prequalification stage of the procurement process was completed and tender documents and drawings were issued. The main contractor should be appointed in early 2012. Construction is expected to start in Quarter 1 of 2012 with a two year contract period;

Athy Southern Distributor Road – a Section 85 Agreement with Athy Town Council has been completed as have Route Selection, Constraints Study, Appropriate Study, Draft Environmental Impact Study, Draft Compulsory

Purchase Order and the Business Case. Outstanding design works and ground investigations continued. No further progress will be possible on this scheme without a funding commitment;

Ardreigh Road – ongoing work to complete the Final Archaeology Report and to prepare the Ardreigh assemblage for delivery to the museum continued and should be completed by the end of 2012;

Works at new Department of Defence Headquarters in Newbridge – Iarnrod Éireann commenced construction of a pedestrian footbridge/footpaths on behalf of Iarnrod Éireann and Kildare County Council. Construction should be completed by Quarter 2 of 2012;

Funding – the Department of Transport provided funding of € 4,656,544 in respect of these projects.



R403 Windmill

Local Improvement Schemes

During 2011 improvements to local access (non public) roads under the Local Improvement Scheme Programme were undertaken at two locations funded by an allocation of €27,000 from the Department of Transport.

Traffic Management Section

The Traffic Management Centre (TMC) in Áras Chill Dara, which was first established in 2006, continues to act as a focus for the provision of traffic management services for the county as a whole. The management of traffic signals, public lighting and related technology is centralised at the Traffic Management Centre in Naas.

There are currently 150 traffic signal installations (pelican crossings and signalised junctions) in the county. There are also 21 zebra crossings, 20 automated traffic counters, 33 CCTV cameras, 70 school warning signals and 6 variable message signs (parking guidance signs). Over 60 of the traffic signal installations are remotely monitored in the Traffic Management Centre.

Investment in the Traffic Management Centre to date has resulted in the provision of Urban Traffic Control (UTC) and traffic related Closed Circuit Television (CCTV) systems in areas such as Newbridge, Maynooth, Naas, Sallins and Celbridge. Improvements in the efficiency of traffic signals in these towns have provided economic time-savings to all road users. It is hoped to expand this intelligent traffic system to other urban centres around the county should adequate capital funding become available.

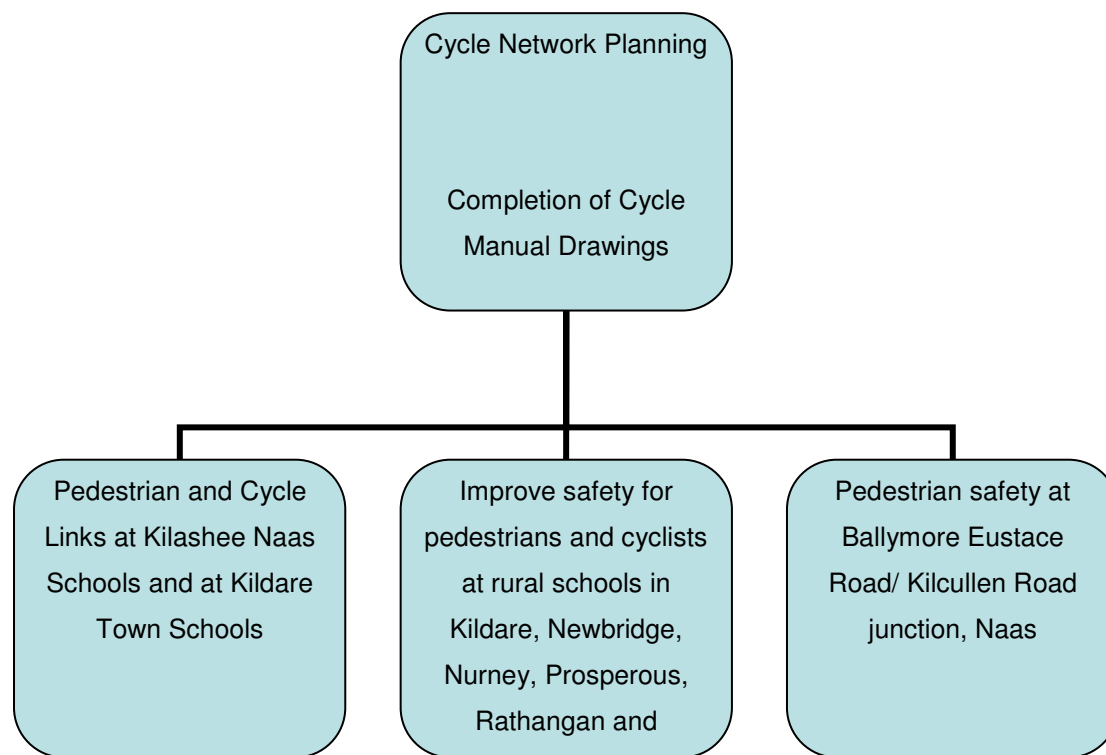
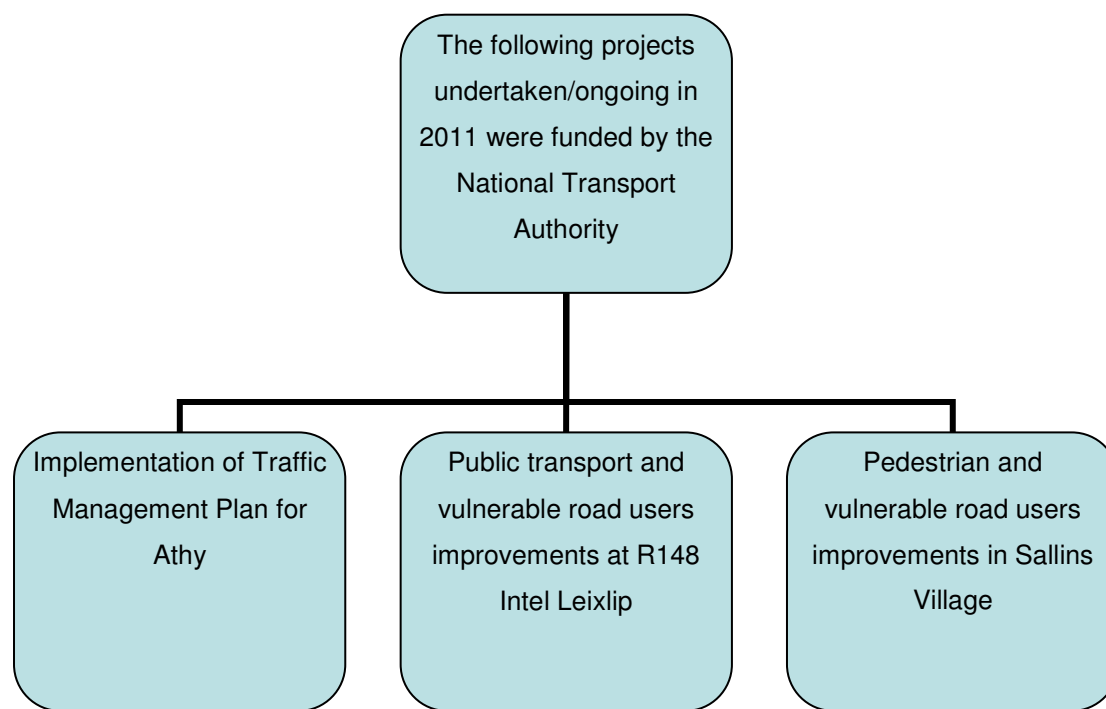


Traffic Management Centre

Public Lighting

There are circa 25,000 lighting units in County Kildare. The maintenance of these lights places a huge burden on the council with an annual cost of approximately €2.9 million for the past number of years. Every effort has been made to reduce this expenditure by going to the market for the maintenance of public lighting and for the supply of electricity. However, this has resulted in only marginal savings which have been offset by the number of lights being taken in charge by the council annually.

National Transport Authority



Severe Weather Preparedness

During the period 27 November to 26 December 2010 there were several snowfalls and some very cold nights on which temperatures fell as low as -18C. In some cases temperatures stayed continuously below 0C for several days at a time. Ground froze to a depth of about 30 centimetres. A rapid thaw set in on 26 December and temperatures rose by 20C in the space of two days. The severe cold and variability of the weather affected road transport and water supplies in County Kildare into 2011. The County Council responded to these conditions in two phases viz;

- keeping roads open and safe
- a campaign to conserve and sustain water supplies.

Road Safety

During 2011 the Road Safety Officer delivered road safety programmes and promoted awareness in the community through a variety of different media. Schools and youth groups are the principal target audience but road safety campaigns at events and festivals in the county reach all age groups.

Preschool and Child Creche

The Road Safety Officer provided two road safety programmes for preschools, i.e. Simon and Friends and Beep Beep Day. Beep Beep Day is a training day and workshop for childcare committee workers to enable delivery of road safety to young children.

Junior/Primary Schools

The Road Safety Officer delivered the following road safety programmes to the 101 Primary Schools in the county:

Schoolgoers Guide to Road Safety – this programme was developed for

students travelling to school by bus, car, bicycle or walking and focuses on pedestrian safety, cycle safety, safe crossings, seatbelts and the Safe Cross Code and also contains information for parents and guardians;

Be Safe – this Road Safety Authority activity-based resource pack is provided to students up to sixth class;

Seatbelt Sheriff- Pupils in first class take a pledge to always wear their seatbelt and to ensure that everyone else wears theirs;

Hi-Glo Silver – for pupils in second class. Hi-Glo helps Seatbelt Sheriff and his message is about visibility;

WOW – Walk On Wednesdays;

Cycle Safety Skills – being delivered to sixteen Kildare schools;

Rock and Stride – parents/guardians with school children

Junior School Warden Scheme – there are three schools in the county in this scheme.

Second Level Schools

The Road Safety Officer and An Garda Síochána visit secondary schools during term and the primary target audience is Transition Year or Leaving Certificate Applied classes. Special hard-hitting programmes were also delivered to sixth year (Leaving Certificate) students at the beginning of school term in September. The following is a list of Second Level programmes –

It Won't Happen To Me – this An Garda Síochána based programme is hard-hitting, graphic and very effective;

Your Road To Safety – the Road Safety Officer links with Transition Year co-ordinators to deliver this Road Safety Authority led programme;

Drive4Life – the Road Safety Officer links with the Drive4Life co-ordinator to deliver this graphic and effective programme;

Streetwise – this Road Safety Authority based programme is delivered to the Junior Certificate cycle and focuses on pedestrians, cyclists, motorcyclists, safety belts and speeding;

Road Safety Roadshow – the AXA/Kildare County Council Road Safety Roadshow was delivered to second level students in May 2011.

Third Level Schools

Safe Grad – the Road Safety Officer was a member of the steering committee on this National Programme for Third Level Institutes.

Kildare County Council held a Road Safety Week at National University of Ireland, Maynooth which involved the Road Safety Authority, National University of Ireland Students Union, An Garda Síochána National Road Safety Unit, Kildare Emergency Services and Kildare Civil Defence.

Other Campaigns/Events

Road Safety Week – events countywide and countrywide;

National Ploughing Championships – held in Athy for the third consecutive year and the response to the Kildare County Council Road Safety stand was extremely positive as it had been previously;

Kildare Road Safety Facebook Page – this is fast becoming the central point of information and interaction for road safety in County Kildare and beyond

and has almost 2,000 friends/followers. Road safety messages are released regularly but particularly during severe weather conditions and as part of all road safety events or campaigns.

Road Safety Officer of the Year

At the Road Safety Authority Leading Lights Awards on Wednesday, 19 October 2011 Declan Keogh, Kildare County Council Road Safety Officer was named joint Road Safety Officer of the Year (with the Clare Road Safety Officer). This is a great honour for him and for Kildare County Council and is a testament to his innovative work in promoting road safety.

Road Safety Plan

The Kildare Local Authorities Road Safety Plan 2011 – 2015 was launched in December 2011 and is designed to ensure a co-ordinated, collaborative and consistent approach to improving road safety for all and which focuses on the four E's of road safety, i.e. Education, Engineering, Enforcement and Evaluation.

Education – raising awareness of road safety by imparting knowledge and developing an understanding of the risks with a view to changing attitudes and behaviour at individual, community and organisational levels;

Engineering – making the road network safer and more forgiving of inevitable errors by road users and vehicle engineering to improve occupant and pedestrian/cyclist safety and minimize harm;

Enforcement – visible and appropriate enforcement acting as a deterrent and increasing compliance with Road Traffic law;

Evaluation – ensuring sustainable reduction in road deaths and serious injury by continuous research into the efficacy of actions undertaken.

A countywide Kildare Road Safety Working Group, recognised by the Department of Transport and by the Road Safety Authority, has been established to provide support to the local authority in its promotion of road safety in County Kildare. The working group is chaired by the Director of Services for Roads, Transportation and Public Safety and meets quarterly to develop and implement road safety initiatives and campaigns. Membership of the group is drawn from Kildare County Council, An Garda Síochána, the Road Safety Authority, the National Roads Authority, the Health Service Executive, Kildare Fire Service, Kildare Ambulance Service and from the elected members of Kildare Local Authorities.

The aims of the plan (and of the working group) are –

- to develop objectives for the reduction and prevention of road collisions;
- to develop strategies to achieve these objectives;
- to involve other agencies in the process;
- to develop a monitoring system for implementation;
- to agree actions to be progressed over the lifetime of the plan;
- to ensure that each of the electoral areas in County Kildare benefits from the implementation of the plan.

Non National Road Training

A Non National Road Training Grant of €57,239 for 2011 was received from the Department of Transport which financed the participation of 328 personnel on the following courses co-ordinated through the Ballycoolin Regional Training Centre viz;

- Chainsaw Training
- Abrasive Wheel Training
- Manual Handling Training, Driver Training
- Ride-On Roller Training
- Location of Underground Services Training
- FETAC Occupational First Aid Training

Pay Parking

Pay Parking is in operation in four towns in the county viz; Newbridge, Kildare, Celbridge and Leixlip and APCOA Parking Ireland Limited are the contracted service provider. Naas and Athy Town Councils operate separate pay parking in the town council areas. Enforcement in the non pay parking areas of the county is undertaken by four traffic/litter wardens.

Celbridge Pay Parking Bye Laws and Leixlip Pay Parking Bye Laws were both reviewed in 2011 and were adopted by Kildare County Council at the July council meeting.

Draft Pay Parking Bye Laws for Maynooth have been prepared and will be progressed in 2012.

19,156 parking fines were issued in 2011. The sum of €835,132 was received in fines and €1,100,972 in pay parking.

Meetings

Electoral Area Committees

The council's five Electoral Area Committees i.e. Athy, Celbridge, Clane, Kildare and Naas met monthly to deal with issues relating to the delivery of services within their respective areas including 617 roads, transportation and public safety issues.

Strategic Policy Committee

Strategic Policy Committees are designed to strengthen the policy development role of members of Kildare County Council. The Transportation Strategic Policy Committee met three times during 2011 and examined the following –

- Proposed policy on the maintenance and sponsorship of roundabouts
- Proposed policy on roadside memorials
- Roads, Transportation and Public Safety response to severe weather conditions
- Provision of salt/grit containers throughout the county
- Kildare Civil Defence
- Road safety
- Traffic calming at schools
- Noise levels on the M4
- Public lighting
- Regulation of private parking areas
- Directional and placename signs

The committee also received a presentation from a representative of the National Transport Authority on safe routes to schools, bus parking facilities at shopping centres etc, integrated signage at bus stops, funding for road safety, funding for off-street parking, traffic surveys and compilation of proposed National Transport Authority schemes for 2012.

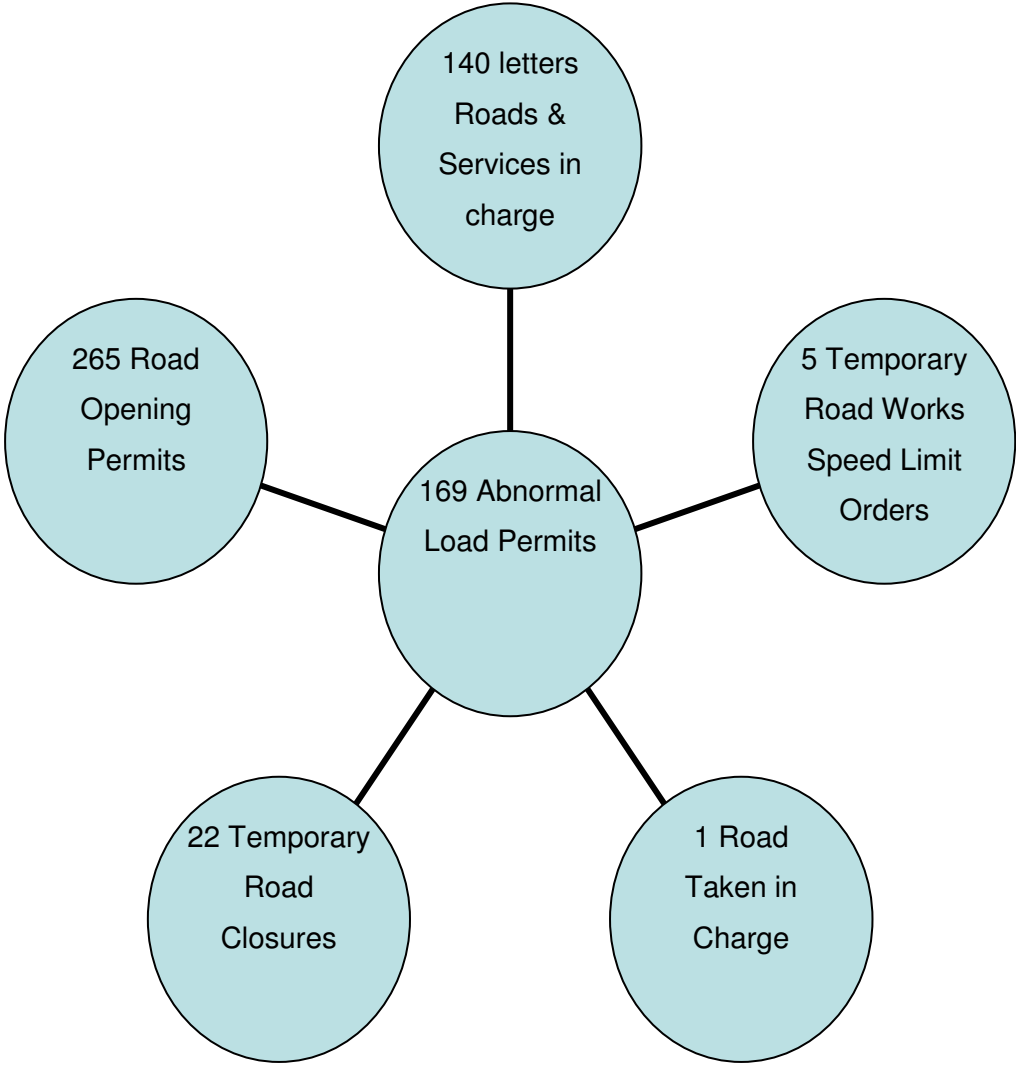
The proposed policy on the sponsorship of roundabouts drafted by the committee was adopted as council policy by Kildare County Council at its June meeting.

Kildare County Council

The full council dealt with 24 roads, transportation and public safety issues at its meetings in 2011.



Other Activities



Adoption of Bye Laws

The following Bye Laws relating to Roads, Transportation and Public Safety Directorate were adopted by Kildare County Council in 2011 viz;

- Special Speed Limit Bye Law (M4 Service Station at Martinstown and Kilmorebrannagh Enfield County Kildare) – adopted at Kildare County Council Monthly Meeting on 28 March 2011
- Leixlip Town Revised Parking Bye Laws – adopted at Kildare County Council Monthly Meeting on 25 July 2011
- Celbridge Town Revised Parking Bye Laws – adopted at Kildare County Council Monthly Meeting on 25 July 2011

Procurement

All procurement undertaken by Roads, Transportation and Public Safety Directorate in 2011 complied with Kildare Local Authorities, State and European Union procedures as appropriate.

Health and Safety

During 2011 the Directorate continued to ensure the Safety, Health and Welfare of all employees in the workplace and to comply with Health and Safety legislation. The Directorate seeks to promote a culture of health and safety awareness and compliance using a proactive approach which includes training and routine inspections.

Fire Service

The start of 2011 presented some significant firefighting challenges for Kildare Fire Service when an underground fire was discovered at the disused Kerdiffstown Landfill near Johnstown. This fire ultimately burned for four weeks before it was finally extinguished. The work of putting out the fire involved the co-operation of staff across the Council including the Fire Service, Civil Defence, Roads, Transportation and Public Safety and Water Services along with other organisations including the EPA, BAM and SKM Enviro. The Fire Services from Dublin, Wicklow and Laois worked alongside crews from all over Kildare to bring the fire under control. Due to the size and scale of the incident and the need for interagency co-operation the structures of the Major Emergency Plan were used during the course of the fire to oversee on-site activities, monitor any off site impacts and keep the media and the local residents informed. The Local Co-ordination Group comprising the HSE, An Garda Síochána, Kildare County Council met daily during the incident and was assisted with expertise from the EPA and the Defence Forces.

The fire itself was located in a waste stockpile between 15m to 20m in height and covering an estimated area of 2.9ha. The fire zone backed onto the main body of waste. The priorities for fire fighting included

- Preventing the fire spreading into the main body of wastes
- Reducing smoke and off-site impacts
- Extinguishing the fire

To achieve these objectives a number of new and innovative firefighting techniques were used including the injection of cold gases (carbon dioxide and nitrogen) into the area on fire. The firefighting process involved the excavation and cooling of the material in the fire zone and the relocation of this waste to safe storage on site.

The fire was deemed to be extinguished on 15 February but there followed a period of testing and checking after this date to ensure that no significant temperature rises were noted.



Fire at Kerdiffstown landfill



Fire at Kerdiffstown landfill

Passing Out Parade

Having completed their initial training and their probationary year nine firefighters had their passing out parade in the Central Fire Station in Newbridge on 30 September 2011. As part of their Passing Out the firefighters demonstrated their firefighting and rescue skills to their families, friends and invited dignitaries.





Open Days

Kildare Fire Service held Open Days in Monasterevin and Naas Fire Stations in September. The purpose of these Open Days was to invite the local community into the stations to meet their firefighters and develop a better understanding of the service that they provide to their community. Both days were very successful and positive feedback was received from all who attended. Building on the success of the Open Days in 2011, similar events are planned for Maynooth and Athy Fire Stations in 2012.

Day to Day Business

Kildare Fire Service is divided into three business units namely Operations, Fire Safety and Special Projects and Emergency Management. The activities of these units in 2011 is summarised below:

Operations

This section deals with issues relating to the operational fire service including firefighting staff, vehicles and equipment, training and the control centre.

In 2011, the Fire Service attended 1594 fire and emergency calls. The table below shows in the context of the number of emergency calls since 2003, and indicates that the number of calls attended have fallen to a level last seen in 2005.

Year	2003	2004	2005	2006	2007	2008	2009	2010	2011
Number of Fire Calls	1437	1538	1590	1780	1658	1913	1654	1768	1594

The number of calls broken down into our six station areas is shown in the following table:

Year	2003	2004	2005	2006	2007	2008	2009	2010	2011
Station									
Newbridge	374	372	410	454	442	472	415	455	440
Naas	284	384	441	487	458	467	400	474	397
Athy	248	237	215	205	206	290	258	243	222
Maynooth	220	250	268	318	256	293	253	237	207
Monasterevin	138	119	109	123	126	166	159	181	164

Leixlip	173	212	147	193	170	222	169	178	164
---------	-----	-----	-----	-----	-----	-----	-----	-----	-----

The calls are broken down by call types as follows:

Year	2003	2004	2005	2006	2007	2008	2009	2010	2011
Fire Type									
Chimney	314	294	291	286	256	252	270	323	279
Dwelling Fires	168	154	195	171	181	223	169	203	191
Other premises	93	113	121	129	85	135	112	97	79
Road Traffic Crash	171	148	192	156	193	217	148	151	173
Other Rescues	33	38	42	43	44	49	33	47	51
Flooding	8	2	3	9	29	96	53	3	4
Outdoor Fires	370	440	358	518	395	416	360	504	446
Motor Vehicle Fires	140	196	180	170	205	278	285	248	181
Miscellaneous	17	24	44	61	69	40	23	28	24
False Alarms	109	101	164	237	204	207	201	142	150

The top five incident types attended by Kildare County Fire Service during 2011 were;

- **Outdoor Fires (446)**

Outdoor fires occur in clusters around all of the major conurbations in the county.

- **Chimney Fires (279)**

It is worth noting that chimney fires, that were showing a downward trend since 2003, had spiked in 2010 to a level of 323. The downward trend experienced again during 2011 can be directly attributed to the much milder winter period experienced in 2011. It remains the case that most chimney fires can be prevented by householders having chimneys cleaned regularly.

- **Dwelling Fires (191)**

Dwelling fires range in severity from small cooker fires to fully developed and fully involved house fires. The number of dwelling fires has decreased slightly from levels in 2010. This may be attributable to greater vigilance by home owners, due perhaps to the fact that more people are at home during the current economic downturn.

- **Vehicle Fires (181)**

Most vehicle fires are attributable to stolen cars that are later abandoned and set alight.

- **Road Traffic Collisions (173)**

The numbers of attendances at road traffic collisions remains high. In responding to vehicle collisions the fire service needs to be very conscious of its own safety particularly on the many high speed roads in the county.

Fire Appliances

During 2011, the fire service sourced and purchased, from the UK, a second-hand fire appliance. The expenditure on this vehicle was in the order of €20,000 and was funded by a capital grant from the Department of the Environment, Community and Local Government (DoECLG). This vehicle has now been refurbished to meet the requirements of Kildare County Fire Service.

Subsequent to this purchase, Kildare County Fire Service was allocated funding for a new appliance under the DoECLG 2011 Capital Expenditure Programme. This vehicle will serve in Newbridge Fire Station.

Training and Implementation of Standard Operational Guidance (SOG's)

During 2011, Kildare County Fire Service began the exercise of implementing the suite of Standard Operational Guidance documents, which are being issued on an ongoing basis by the National Directorate for Fire and Emergency Management (NDFEM). It is expected that approximately 62 different SOG's will issue by the completion of the program covering a wide variety of Fire Service incident types and situations.

Control Centre

The Fire Service continues to operate a control centre which receives 999/112 emergency calls for the fire service, mobilises the appropriate resources and provides support to those fire service resources when deployed. In addition to the fire service emergency work the control centre also provides out of hours emergency call answering for a number of local authorities including Kildare.

Fire Safety

This section deals with Fire Safety Certification, Community Fire Safety, Petroleum Licensing, District Court licensing and planning for Outdoor events e.g. National Ploughing Championships and Oxygen.

- **Fire Certification**

153 applications for Fire Safety Certificates were received in 2011.

During the year:

- 14 were deemed to be invalid
- 154 were deemed to be valid.
- 140 Fire Safety Certificates were granted.
- 2 Fire Safety Certificate Applications were refused.

Apparent discrepancies in these figures are as a result of a number of 2010 applications being dealt with in 2011 and some 2011 applications being carried over to 2012.

- **Regularisation Certificates**

33 applications for Regularisation Fire Safety Certificates were received in 2011.

- 3 were deemed to be invalid
- 32 were deemed to be valid.
- 17 Regularisation Fire Safety Certificates were granted in 2011
- 1 Regularisation Fire Safety Certificate application was refused.

- **Childcare Premises**

In 2011 a total of 82 inspections were carried out on full day care and sessional premises, this represented 35% of all 233 day care premises.

- **Hotel Inspections**

6 hotels that had not received a full inspection in the previous three years were inspected.

- **Dangerous Substance Act**

8 petrol filling stations applied for licenses under the Dangerous Substance Act. All were granted licenses.

- **Air Pollution Act, 1987 (Petroleum Vapour Emissions) Regulations 1997**

The Fire Safety Section formally wrote to all petrol filling facility operators and outlined the requirements under the act / regulations. 7 new facilities applied for Vapour Recovery Certificates and 6 existing premises applied for renewal of their licenses.

- All 13 were granted.

- **Circuit and District Courts Licensing**

A total of 64 inspections were carried out on 57 licensed premises, 37 of these had applied for dance licenses.

- **Building Inspections**

In addition to Licensing, Child Care facilities and Dangerous Substance Act inspections the Fire Safety Department carried out an additional 155 inspections on 118 other premises.

- **Community Fire Safety**

In addition to the schools training programme two fire safety talks were given to community groups. Three interviews were given on KFM during Fire Safety Week, at Christmas and at Halloween. A fire safety stand was manned and chip pan fire demonstrations were given at the National Ploughing Championships and a chip pan fire demonstration was given in Newbridge during Fire Safety Week.

Special Projects and Emergency Management

This section deals with Major Emergency Management, the Risk Based Analysis of Fire and Emergency calls, Pre-Incident Planning, Seveso II, the Inspection and Enforcement of Residential Institutional Buildings, Explosive and Firearms Licensing and Fireworks Applications

Major Emergency Management

The following was achieved in 2011;

- An appraisal completed on Major Emergency Management preparedness for Kildare County Council. This appraisal was forwarded to the Department of Environment, Community and Local Government.
- An 'Emergency Extranet' was developed in conjunction with the IT Section. This facility will enable secure access to aspects of the Major Emergency Plan by authorised personnel from Kildare County Council.
- The Major Emergency Risk Assessments were updated.
- Five Major Emergency Management Committee meetings were organised.
- Two major emergency exercises were carried out for Kildare County Council Staff (one mobilisation exercise in October and one discussion based tabletop exercise in December).
- Staff from the section attended all Regional Working Group meetings and Sub-Committee meetings.
- Regional on site co-ordinator training was delivered.

Pre-Incident Planning

The following tasks were undertaken;

- 33 Pre-Incident Plans were completed for high risk buildings, enabling follow-on compliance inspections to be carried out
- 35 Pre-Incident planning compliance inspections were carried out
- All Vehicle Mounted Data Systems were updated on a monthly basis
- Refresher training sessions on Vehicle Mounted Data System (VMDS) use were carried out in all stations

High Risk Residential Premises

The following work was carried out;

- 25 nursing home inspections
- 5 hospital inspections

Miscellaneous

The following additional tasks were completed;

- An Inter Agency Tabletop exercise was run for the Top Tier Seveso Site at IIE Enfield in December
- All applications for proposed fireworks displays were processed
- Data collated for Risk Based Analysis for Kildare Fire Service for 2011 and a report prepared
- Liaison with Bord na Mona and Coillte and maps of bog and forest areas uploaded on VMDS

Water Services

The Water Services function is divided into four sections:

- Ongoing operation and maintenance of Water and Wastewater Schemes
- Capital Investment Programme
- Rural Water Programme
- Flood Alleviation

Operation and Maintenance

Water Supply

The water services section is responsible for the provision and maintenance of adequate water supplies and wastewater treatment and discharge facilities in compliance with both the EU Drinking Water Directive and EU Urban Waster Water Treatment Directive.

Kildare is highly dependent on Dublin local authorities for its water supply. Of the current average daily demand of up to 80,000 cubic metres, some 94% comes from the regional water treatment plants at Ballymore Eustace (Dublin City Council) and Leixlip (Fingal County Council). The bulk of our work involves

- Maintain repair and upgrade reservoirs, pipes and fittings.
- Monitor performance and manage the network to ensure the efficient use of resources.
- Connect new commercial and private customers.
- Monitor and protect water quality.

Continued water conservation activities, spearheaded by the Leak Detection Unit, have resulted in the unaccounted for water levels being reduced from a high of 32 % in January 2011 to 26 % average for November/ December

2011. This is a significant achievement given that the average unaccounted figure for water levels in the country is approximately 40%.

Waste Water

Kildare is generally self sufficient in this regard, with wastewater being treated at a number of wastewater treatment plants within the county.

The largest of these plants are at Leixlip (serving Kilcock, Maynooth, Celbridge, Leixlip and Straffan) and Osberstown (serving Naas, Newbridge, Kilcullen, Athgarvan, Prosperous, Sallins, Clane and Kill). Both plants have an existing design capacity of 80,000 population equivalent (PE).

The Council plans to upgrade both plants and associated networks at Osberstown WWTP increasing to 130,000 PE and Leixlip WWTP increasing to 150,000 PE.

The Waste Water Discharge (Authorisation) Regulations, 2007 (S.I. No. 684 of 2007) require the Environmental Protection Agency (EPA) to authorise all local authority waste water discharges. The purpose is to reduce and prevent the pollution of waters and follows on from the requirements of the Water Framework Directive.

Kildare County Council has submitted licence applications for all 37 plants in the county using in-house staff for the preparation of the licences and employing external expertise to address ecology issues identified in the Habitats Directive.

A total of 10 Waste Water Treatment plants have been issued with licences to date. There are 3 remaining plants namely Rathangan, Monasterevan and Kildare awaiting grant of licence.

All small plants, i.e. with population less than 500 PE (coloured blue), have been issued with certificates of authorisation appropriate to this size of plant.

Capital Programme

The Water Services Capital Works Section is responsible for the delivery of the major Water Supply and Wastewater Schemes in the county.

The Department of Environment, Community and Local Government has included the following contracts under the Water Services Investment Programme 2010-2012;

Contracts at Construction

- Kildare Wastewater Treatment Plant – Design Build Operate Contract
- Barrow Abstraction Scheme
 - Contract 1 - Water Treatment Plant – Design Build Operate Contract
 - Contract 2 - Network
 - Contract 3A - Network

Contracts to Start Construction 2010-2012

- Ballymore Eustace Sewerage Scheme
 - Contract A – Wastewater Treatment Plant, Contract B – Pumping Station and Pipelines
- Castlewarden to Ballygoran Pipeline and Reservoir Scheme
- Lower Liffey Valley Sewerage Scheme - Wastewater Treatment Plant Upgrade
- Upper Liffey Valley Sewerage Scheme Phase 3
- Osberstown Wastewater Treatment Plant Upgrade
 - Contract 2A – Network, Contract 2B – Network
- Barrow Abstraction Scheme - Contract 4 - Bagenalstown Lock Upgrade

- Kildare Sewerage Scheme - Contract 2A – Civil Engineering Works

In addition the following major Water Services Contracts are being advanced to construction in 2012;

- Ballygoran to Collinstown Watermain Scheme
- North Leixlip Sewerage Scheme

Rural Water Programme

Group Water Schemes

A group water scheme provides a private water supply to 2 or more houses by means of a common or shared source of supply and distribution system.

The Council assists groups by working in partnership with them and by:

- Providing advice and guidance on the formation and operation of group schemes
- Providing technical advice on source and supply issues, distribution networks, water quality and treatment, scheme design, etc
- Enabling groups to take a water supply from public water mains where this is feasible
- Providing advice and assistance on tender procurement and evaluation
- Grant aiding group scheme up to 85% of the approved cost, subject to a limit of €6,475 per house
- Supervision of construction standards
- Providing an annual subsidy towards the operation and maintenance costs incurred on the scheme by the group

There are currently 97 operational Group Water Schemes in Kildare.

Summary of Grants Paid in 2010

New Group Water Schemes	€120,000
To Boherhole/Mainham Group Water Scheme	
Subsidy Grants	€34,000
To the various Group Water Scheme's in the county	
Advance Design Build Operate Works	€172,180
In respect of Usk/Gormanstown	
Take Over of Group Water Scheme	€172,179.51
European Court of Justice Priority Interim Works	€60,738.29
To Killeel Group Water Scheme	
Total	€386,917.80

Smaller Water and Sewerage Schemes

Funding is provided for capital projects for the provision of upgrading of small water and sewerage schemes that complement existing rural water measures.

In 2011, €768,103.80 was spent on the Small Schemes Programme, which incorporated the following schemes, amongst others:

- Kildare Town Dunmurray Road Water and Sewerage Scheme
- Athy Water Supply Scheme
- Kill Village (The Gables) Sewerage Scheme
- Kilcock Ringmain (Motorway Crossing)
- Castledermot Water Supply Scheme

Individual Water Supply Grant Scheme (Well Grants)

A grant of 75% of cost subject to a maximum grant of €2,031.58 is payable for upgrading a private individual water supply when no alternative group or public supply is available. Grant aid of €30,415.03 was paid under this scheme in 2011.

Rural Water Monitoring Committee

The Rural Water Monitoring Committee was set up in 1998 and the committee meets quarterly to agree and monitor the Rural Water Programme. The committee is comprised of representatives from the I.F.A., the I.C.M.S.A., the County Federation of Group Water Schemes, the National Federation of Group Water Schemes and members and officials of Kildare County Council.

Public Conveniences

The expenditure on provision of public conveniences in Newbridge and Kildare for 2011 was €64,413.62.

Flood Alleviation

A dedicated flood alleviation unit operates within the Water Services Department implementing the Major Flood Alleviation Capital Programme. Funding for such schemes is sourced from the Development Levy Contribution Scheme and the Office of Public Works (OPW). Over the past number of years the following schemes were completed;

- Toni River Flood Alleviation Scheme
- Butterstream Flood Alleviation Scheme Phase 2
- Confey Flood Alleviation Scheme
- Newtown Flood Alleviation Scheme
- Sallins Flood Alleviation Scheme Phase 1
- Kilbelin Flood Alleviation Scheme
- Butterstream Flood Alleviation Scheme Phase 3

The following schemes are currently at construction stage and nearing completion:

- Sallins Flood Alleviation Scheme Phase 2
- Johnstown Flood Alleviation Scheme
- Ardclough Flood Alleviation Scheme

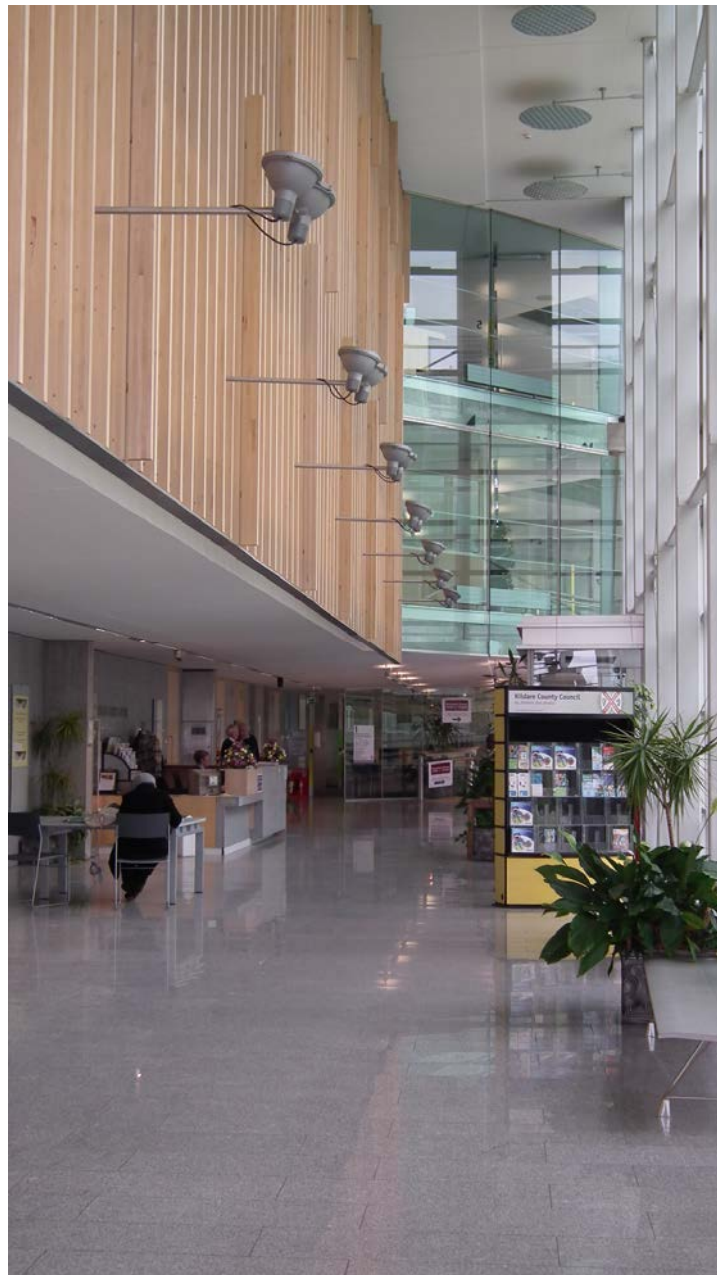
It is also planned to carry out works in the following areas over the course of 2012;

- Mooneys Stream Flood Alleviation Scheme
- Butterstream Flood Alleviation Scheme Phase 4
- Ballymore Eustace (River Walk) Flood Alleviation Scheme

In addition to the above works planned for 2012, discussions with various bodies are ongoing regarding the Morrell River catchment north of the N7 to its confluence with the River Liffey in Turnings, Straffan. This catchment is recognised as being at risk of flooding during storm events however major capital investment is required to reduce the risk of flooding within the area. All

attempts will be made over the course of 2012 to secure the appropriate levels of funding to advance the required mitigation works.

It is widely anticipated that changes in rainfall patterns and rises in sea levels as a result of climate change may make flooding more frequent and severe in the future. While climate change cannot be prevented we can take measures to prepare for it and in turn reduce the damage and hardship as a result.



Forward Planning

Development Plans

The purpose of a Development Plan is to set out an overall strategy for the proper planning and sustainable development of its functional area. This is done in accordance with the requirements of the Planning and Development Acts, the National Spatial Strategy, the Regional Planning Guidelines and any other national, regional and local policy developments and EU requirements. A new County Development Plan for Kildare for the period 2011 to 2017 was adopted by the council in May 2011 and work continues on the implementation of its policies and objectives.

In summary, the main objectives in the plan are:

- Zoning of land
- Provision of infrastructure
- Conservation and protection of the environment
- Management of features of the landscape
- Compliance with environmental standards
- Integration with social, community and cultural requirements
- Protection of structures
- Architectural conservation
- Regeneration
- Accommodation for travellers
- Provision of recreational amenities
- Provision of community services
- Promotion of sustainable development
- Preservation of public rights of way

Naas Town Council completed the review of their Town Development Plan and a new Naas Town Development Plan 2011-2017 was adopted by the Town Council in May 2011.

Athy Town Council commenced the review of its Development Plan in April 2010 and work continued on it during 2011. It is due for adoption early in 2012.

Local Area Plans

In order to ensure the objectives of the Core Strategy of the County Development Plan are met, there is a requirement to vary the County Plan to incorporate the following Small Town Plans: Kill, Prosperous, Rathangan, Athgarvan, Derrinturn and Castledermot. Work commenced on the variation in 2011 and the formal statutory process will commence in January 2012.

Work also commenced on the review of the following Local Area Plans in 2011: Kildare Town, Maynooth and Newbridge. New Local Area Plans for these towns will be adopted in 2012/2013.

The following Local Area Plans will be amended to bring them in line with the new Core Strategy in the County Development Plan throughout 2012/2013:

- Monasterevin
- Kilcullen
- Kilcock
- Clane
- Sallins
- Leixlip/Collinstown
- Celbridge/Castletown

All the plans are prepared within the context of the National Spatial Strategy, Regional Planning Guidelines, the County Development Plan, the Strategic Environmental Assessment Regulations and other local and national policies.

The Forward Planning Section continued to liaise with the Department of Education and Skills throughout 2011 assisting the Minister and officers of the

Department in planning for the future provision of educational services in the county. Contact with the Department was mainly via regular meetings held both at Kildare County Council offices and at the Department's offices in Tullamore on a rotating basis. It is intended to continue these useful meetings in 2012.

The meetings discuss all relevant planning issues relating to the provision of education, from pre-planning discussions through to compliance related matters post permission. The Department of Education and Skills, together with the City and County Managers' Association, drafted a Memorandum of Understanding during 2011 on acquisition of sites for school planning purposes. In essence, the Memorandum of Understanding puts in place a process whereby the local authority assists in the site identification and acquisition process on behalf of the Minister. Official requests were made of Kildare County Council for sites in Monasterevin and Naas and the process commenced during 2011.

Development Management

Planning Applications

Kildare County Council received a total of 1237 planning applications during 2011 and of these, 216 were deemed invalid and returned to the applicants. The Planning Authority issued 728 decisions to grant and 263 decisions to refuse permission. 49 appeals were confirmed by An Bord Pleanala.

Naas Town Council received a total of 95 applications during 2011 and of these, 11 were deemed invalid and returned to the applicants. The Planning Authority issued 64 decisions to grant permission and 6 decisions to refuse permission, no appeals were confirmed by An Bord Pleanala.

Athy Town Council received a total of 41 applications in 2011 and of these, 5 were deemed invalid and returned to the applicants. The Planning Authority issued 20 decisions to grant permission and 6 decisions to refuse permission,

4 appeals were confirmed by An Bord Pleanála.

Due to changes in legislation, the Planning Permission Application form and the site notice have been updated. An email list of over 200 planning agents has also been compiled and any relevant information/updates is emailed to these agents to keep them up to date with any changes to processes in the Planning Department.

Pre-Planning Meetings

Pre-planning meetings are designed to deal with prospective applicants for large-scale residential or commercial developments. They are generally very beneficial and will improve the quality of a subsequent planning application. In 2011, a total of 77 formal pre-planning meetings were held in-house dealing with commercial and large multi unit developments. Pre-planning clinics which are held during the year also, are designed to deal specifically with prospective applicants for a house at a rural location or other small-scale developments. A total of 5 pre-planning clinics were held in Áras Chill Dara in 2011, these clinics were attended by 63 prospective applicants. In addition to the clinics held in Áras Chill Dara, outreach clinics were held in Athy, Clane and Leixlip Area Offices. A total of 8 outreach clinics took place in 2011 which were attended by 43 applicants.

Building Control

317 valid Commencement Notices and 153 applications for Fire Safety Certificates were received under Building Control legislation in 2011. In addition, 33 applications for regularisation certificates were received, 91 applications for Disability Access Certificates were received and 40 applications for seven day notices were received. A new Technical Guidance Document Part M Access and Use 2010, has been introduced. This document applies to works which take place on or after 1 January 2012 but many of the

Disability Access Certificate applications submitted in 2011 demonstrate compliance with the new document.

Development Control

The council continues to make significant progress in the taking in charge of residential estates. Fourteen estates were taken in charge in 2011 and a further three estates were advertised for taking in charge. It is anticipated that these estates and other estates will be taken in charge in 2012. The management of unfinished estates and estates where developers have found themselves in financial difficulties, in receivership or in liquidation is now the priority for the Development Control Department and the re-allocation of resources into this area is delaying work in relation to the taking in charge of completed developments.

Planning Enforcement and Prosecutions

The objectives of the enforcement system are to ensure that objectionable development is discontinued and that planning permission is obtained before commencement of development. The planning authority is obliged to investigate written complaints that they consider are not frivolous or without substance. A total of 226 new complaints of unauthorised development were received in 2011. There were 239 warning letters issued to developers and 77 enforcement notices served where warning letters were not complied with. Legal proceedings were initiated in 27 cases and 102 unauthorised development files were closed.

Heritage

Kildare County Council, through the Heritage Office, continued to develop its role in the protection and promotion of the built and natural heritage resources of the county throughout 2011. This was achieved by providing advice on all

aspects of Kildare's heritage and matters relating to heritage issues in the county and by developing policies and priorities for the identification, protection, preservation and enhancement of the county's heritage. The heritage work programme seeks to promote interest, education, knowledge and pride in the heritage of the county, and in so doing, increasing awareness, appreciation and enjoyment of the county's heritage for all.

The Heritage Officer contributed to the development of policy in the context of the review of the Local Area Plan and amendments to the County Development Plan 2011-2017, through the assessment of planning applications and by continuing to actively engage with individuals and community groups across the county to provide advice, support and guidance in relation to the various aspects of heritage.

The development of a co-ordinated heritage strategy at county level is a key recommendation of government policy as outlined in the National Heritage Plan (2002) and the National Biodiversity Plan (2002). This is being achieved through the establishment of the County Kildare Heritage Forum and the co-ordination and implementation of the County Kildare Heritage Plan 2005-2009, which has been extended to 2012. The actions of the County Kildare Heritage Plan implemented in 2011 include the following:

Collection of heritage data

- Architectural Conservation Area Statement for Kildare Town
- Urban Tree Survey: Maynooth, Celbridge
- Habitat Mapping and development of Green Infrastructure mapping for Maynooth, Celbridge, Kildare, Kilcullen and Newbridge
- Daubentons Bat Survey training
- Digitisation of oral recording records
- Survey work on the invertebrate populations of the Curragh
- Mapping of the Floral Protection Order Species

Raising heritage awareness

- Community Heritage Grant Scheme 2011 (27 applications received)
- Newbridge Heritage Trail- addition of more plaques.
- Birds in the School Yard Project (Kildare Education Centre co-funded)
- Heritage Week 2011 (over 50 county wide events)
- Signage at Ballynafagh Lake
- National Tree Week
- Ongoing advice to tidy towns groups, community groups and individuals regarding heritage management and conservation.

Promoting best practice

- Graveyard maintenance training for FÁS workers and graveyard committees
- Archaeological training for local authority staff
- Support Tir Na Mona in the management of Ballynafagh Lake

Inform and advise on local authority heritage management

- Completed evaluation of the County Kildare Heritage Plan 2005-2009 with a view to providing recommendation on the next Heritage Plan, which will be prepared in 2012.
- Appropriate Assessment training for local authority staff (planners).
- Input into various Local Area Plans and amendments to County Development Plan 2011-2017
- Advice to Historic Monuments Advisory Committee
- Leixlip Spa Committee

A total of €99,800 was spent on the above programme in 2011 of which €16,200 was secured from the Heritage Council. The Heritage Plan project- "Reusing Farm Buildings - A Kildare Perspective"- publication was short listed for the Excellence in Local Government Awards 2011.

Architectural Conservation

The Architectural Conservation Officer provides technical advice and recommendations to the local authority and the public, on the built heritage of the county. This is carried out on a statutory basis through Part 4 of the Planning and Development Act. Historic buildings and their setting are protected through, their addition to the Record of Protected Structures. Associated historic urban, rural and designed landscape spaces, can be further protected by establishing Architectural Conservation Areas.



Addition to the Record of Protected Structures former Gardeners House, Castletown

As part of the Development Plan reviews, historic building surveys were carried out for the county, Naas and Athy in 2011. Buildings were added to the Record of Protected Structures for the county, Naas and reviewed for Athy.



View of Kildare Town and John Rocque's 1757 map (RIA atlas)

Architectural Conservation Areas were also proposed as part of the various Development Plan reviews. An Historic Landscape Characterisation Study was carried out for Kildare. This is an important heritage survey framework, which informs Local Area Plan reviews and the definition of Architectural Conservation Areas. This study was made possible through Heritage Council funding and as an action of the Heritage Officer's Heritage Forum.



Window repair at Clongowes Wood College and detail to tower

Architectural Conservation advice guides sensitive repair and proposed interventions to Protected Structures, early consultation is critical.



Completed Conservation Grant works to Thatch cottage at the National Stud Tully

The Conservation Grants Scheme has been paused due to government budgetary cut backs.



The Wonderful Barn, Barnhall, Leixlip - conservation repair works were funded by the Heritage Council

The Conservation and Heritage sections were successful in securing conservation funding from the Heritage Council. It allowed urgent repair works to take place, on this internationally important former grain store and dove cote folly.



Newberry Hall Carbury c.1760 set in a 444 acre demesne

Important roof repair was carried out to this Georgian Palladian farm complex, the Conservation Officer liaised with the owners Conservation Architect.



Rathangan Community Hall

The Conservation Officer is actively involved in the reuse of historic buildings.



Ardrass Chapel roof repair

The Historic Monuments Committee seeks advice from its technical officers on the ongoing maintenance and repair of these medieval structures in the county.

Housing Department

The council's housing stock now stands at 2,915 with an average rent of €42 per unit.

Among the services provided by the Housing Department are:

- Social Housing
- Social Housing Leasing/Rental Accommodation Scheme
- Improvement Grant Scheme for Disable and Elderly Persons
- Homeless Services
- Traveller Accommodation
- Tenant Liaison Officers
- Community Development
- Housing Maintenance
- House Purchase Loan
- Tenant Purchase Scheme
- Voluntary Housing

The emphasis in the delivery of social housing support has changed from capital expenditure to current expenditure. The traditional housing construction programme has been replaced by the Social Housing Leasing Initiative and the Rental Accommodation Scheme and housing through the voluntary sector.

In delivering these services, the Housing Department attempts to provide a quality customer service to clients, elected members and council staff. The downturn in the economy means that there is a greater need for support in the provision of housing for families and this has meant an increase in the number of housing applications and an increase in the number on the housing list

There are up to 4,000 people in receipt of rent supplement in County Kildare

and while they are on the social housing waiting list, they do not have an immediate housing need as they are adequately housed with state support.

Kildare Civil Defence

Kildare Civil Defence has at present 94 volunteers and each volunteer is trained in First Aid, Search and Rescue, Welfare, Auxiliary Fire Fighting and Communications.

Training classes are held in Naas and Athy on a weekly basis. A number of volunteers trained and qualified as instructors throughout the year.

2011 was a very busy year for Kildare Civil Defence.

The year started with Civil Defence providing Auxiliary Fire Personnel to assist Kildare Fire Service in relation to the fire at Kerdiffstown landfill. Civil Defence Welfare Team provided hot food twice a day for 21 days for all emergency personnel on site.



Kildare Civil Defence resources being used at the landfill fire in Kerdiffstown

Kildare Civil Defence was involved in a wide range of activities during the year such as;

- Assisted in a search for a missing person in the Broadford area at the same time as the fire in Kerdiffstown landfill.
- Assisted at the St. Patrick's Day parades in Clane, Newbridge and Athy and also participated in the Easter parade in Naas.



- Involved in the visit of the Dalai Lama to Kildare Town and also assisted An Garda Síochána in the Queens visit to Kilcullen.
- Kildare Civil Defence Welfare Unit provided food to the emergency services when they were tackling the large bog and gorse fires.
- Provided personnel to assist with the running of the Kildare Marathon which ran through Newbridge, Athgarvan, the Curragh and Kildare Town.
- Assisted at the Dubai Duty Free Irish Derby, Oxegen music festival, Electric Picnic and National Ploughing Championships.
- Waterford City Civil Defence requested Kildare Civil Defence to assist at the Tall Ships event for the duration of the 3 day event providing stewarding, medical, boating and welfare assistance.
- Hosted the Civil Defence Officers Association Conference which was held in Killashee House Hotel in November. This was a two day training conference and also incorporated a trade show.

Athy Town Council honoured all Kildare Civil Defence Members by hosting a civic reception which was held on 17 June 2011.



Members of Kildare Civil Defence with Sgt. Tim Burke who attended the Civil Defence Officers Association Conference in Killashee House Hotel

ICT Activities

Infrastructure

The main body of work in 2011 was the delivery of a wireless Wide Area Network (WAN) infrastructure for the county and town council offices. This is illustrated below:



This project involved the wireless connection of the sites listed back to Áras Chill Dara. The bandwidths achieved are of the order of 30-100 times previous bandwidth with a pay-back period on the initial investment of 3-4 years.

Whilst this project was ongoing, the IT technical support crew processed over 15,000 calls to the helpdesk to do with email, PC and printing issues and general user support problems.

Development

Development effort centred on the launch of new websites for the county and town councils, see www.kildarecountycouncil.ie for example. These websites were upgraded to facilitate the increased popularity of social media platforms, Twitter, Facebook, RSS feeds, etc.

The council developed a full dog licensing system back end and online payments front end and continues to work to move a number of legacy MS Access based systems into MS SQL with browser enabled front ends.

The council will continue to promote Kildare.ie as the portal of choice to promote the county in tourism, community and business areas.

The council will continue to support the range of systems in the sections; (Planning, Finance, Housing, Corporate, etc).

Procurement Activities

In July 2011, Kildare County Council formally established a Procurement Unit. This unit aims to ensure best value for money for Kildare Local Authorities whilst attaining compliance with an increasing array of legislation and regulations in the procurement area. The unit is establishing procedures and policies and apart from managing selected individual tenders, is establishing a centre of procurement excellence to offer assistance to sections undertaking procurement exercises.

Higher Education Grants

This is the final year that Kildare County Council will be processing new higher education grants. A new centralised body has been set up by the Department of Education and Skills called the Student Universal Support Ireland (SUSI) to process all higher education grants for the academic year 2012/2013 and onwards. Kildare County Council will continue to process existing higher education grants and this will be phased out over the coming years.

There is a slight decrease in applications this year compared to the previous year academic year 2010/2011.

Academic Year	No. of new applications received	No. of renewals	No. of Grants issued	No. of Refusals Issued/Withdrawals/Incomplete
2010/2011	1121	893	1458	556
2011/2012	1027	1199	1442	784

Qualifying distance criteria for the non adjacent rate of a Higher Education Grant

This year the higher education grant scheme increased the distance that student must reside from home to college from 24km up to 45km. This had a significant impact on students residing in County Kildare. A large proportion of students saw their grant reduced to the adjacent rate because of this change.

Online Applications

In 2011 Kildare County Council gave students the option to apply online for their higher education grant application. This has proven to be extremely popular and approximately 500 of the 1121 new applications received were online applications. This increased the processing time of assessing applications significantly.

Incomplete Applications

In order to address the problem of incomplete applications a team of staff from the Higher Education Grant section attended two seminars in NUI, Maynooth for new students and for mature students. An information and help desk was set up to provide vital information to students entering into third level education for the first time or those returning to third level education. This help desk received hundreds of queries and was commended by students and college staff.

The value of grants paid in 2011 was €5 million.



Register of Electors

The council publishes a Register or list of all those entitled to vote in the county each year. The Draft Register for 2012/13 was published on 1 November 2011 and put on public display in Post Offices, Garda Stations, libraries and county council offices throughout the county. The total number of electors on the Draft Register for 2012/13 was 140,683.

The council conducts extensive research and publicity campaigns during the year to ensure that the register is as accurate as it can be. Our website now has the facility to view up-to-date information on the Register and all current forms are available for download. There is also the option on the website to check your details online.



Freedom of Information

The number of applications received in 2011 was 31 of which 9 were requests for personal information.

Requests were dealt with as follows:

- 14 requests granted
- 8 requests part-granted
- 3 requests refused
- 3 requests withdrawn
- 1 dealt with outside FOI

There was 1 application for internal review and 1 appeal lodged with the Information Commissioner.



Human Resources

Recruitment

The staff complement for Kildare Local Authorities at 31 December 2011 was:

Core Staff	Number	Whole Time Equivalent
Managerial *	6.00	6.00
Clerical/Administrative	369.00	332.00
Professional/Technical	158.00	157.00
Outdoor	381.00	314.00
Incentive Career Break Scheme	12.00	10.90
Supernumeraries	21.00	21.00
Total Core Staff	947.00	840.90
Other Staff		
Contract Posts	30.00	30.00
Site Supervisory Contract Posts	3.00	3.00
Temporary/Seasonal *	7.00	7.00
Retained Firefighters	76.00	N/A
Non Department of Environment, Community and Local Government	11.00	5.00
Total Other Posts	127.00	45.00

The Department processed applications for various positions in relation to 12 competitions that were held during the year. 585 applications were received, 446 male and 139 female.

As a result of the competitions held for the posts, 102 applicants were deemed qualified and placed on panels, 75 male and 27 female. 10 posts were offered - 6 male and 4 female.

Training and Development

The continuing need for a modern, flexible, multi-skilled workforce is recognised, and training schemes are tailored accordingly, with the co-operation and participation of staff. Particular emphasis is placed on health and safety requirements, accessibility and diversity, management skills, technical skills and skills for the job.

Employee Assistance Programme

Awareness sessions were held during 2011 throughout the county to promote The Employee Assistance Programme to all staff. A link for the website was placed on the staff intranet under 'Latest items added'. Staff can access a wide variety of information from legal matters to financial matters on the website. Human Resources promote the EAP on a continuous basis throughout the year. Human Resources circulate flyers from the EAP who promote different themes during the year. The freephone number is 1800 995 955 which is accessible 24 hours a day, 365 days a year. All contact made by staff with the Employee Assistance Programme is totally confidential.

Industrial and Employee Relations

Human Resources continues to engage with trade unions and staff representatives on a regular basis to deal with both local and national issues as they arise. The Kildare Local Authorities Action Plan under the Public Service (Croke Park) Agreement 2010-2014 was originally presented to the relevant trade unions in Nov/Dec 2010 and was revised in April, 2011. Consultation continued throughout 2011 on the implementation of the local action plan and this formed the bulk of the workload in industrial relation terms.

Kildare Local Authorities has made significant progress in implementing its local action plan which includes measures required to deal with the reduction of staffing levels throughout the organisation over the past three years. Further actions have been successfully implemented involving review and restructuring of services, integration of town council services, inter-agency shared services, establishing multi-disciplinary business units, modernising and streamlining the procurement function, eGovernment initiatives and, in addition, the implementation of nationally agreed policies and procedures. Human Resources policy of fostering good industrial relations through the Partnership approach at corporate level has facilitated the implementation of the change programme across the local authorities as this could not be achieved without the continued co-operation and effort of the county council and town council workforce. Significant savings were achieved in 2011 as a direct result of the co-operation between management, staff and the trade unions in view of the difficult financial situation facing local authorities.

Workplace Partnership

Workplace Partnership is the way we do things, not something to do in Kildare Local Authorities. Each directorate has its own respective workplace partnership committees. The Kildare Local Authority Workplace Partnership Committee is nominated by representative of unions, management and employees within Kildare Local Authorities.

Consensus is the method used for decision-making in Workplace Partnership. The Workplace Partnership framework is recognised as the method for implementation of the Employees (Provision of Information and Consultation) Act 2006.

During 2011 the committee met on seven occasions and dealt with the following agenda items:

- Continuation of the Return to Learning Programme
- Production of staff newsletter
- Internal communications
- Departmental Partnership Meetings
- Dignity at Work
- Cycle to Work Scheme

Retirements

The following persons retired during 2011, having completed 851 years combined service:

Name	Position
Anne Hefferenan	Staff Officer
Betty Lalor	Assistant Staff Officer
Charlie Talbot	Senior Executive Officer
Chris O'Hara	General Services Supervisor
Dermot Donnelly	General Operative
Des Garrett	Caretaker
Des O'Connor	Senior Engineer
Edel Boland	Assistant Staff Officer
James Cross	General Operative
Joe Giblin	Revenue Collector
John Power	Trained Plant Operative
Joseph Dempsey	General Services Supervisor
Liam Carroll	Chief Technician
Liam Winders	Foreman
Marianne Hogan	Staff Officer
Marie Murphy	Clerical Officer
Mary Breathnach	Senior Library Assistant
Mary Butler	Clerical Officer
Mary Coughlan	Senior Library Assistant
Mary Gallagher	Clerical Officer
Michael Dempsey	General Operative
Mike Carroll	Community Warden

Paddy Morning	Plumber
Padge Keogh	Draughtsman/Tech 2
Sandra Gannon	Staff Officer
Sean Byrne	Executive Technician
Sean Leonard	Driver Cat 6A
Thomas Cullen	General Operative
Tim Coyle	General Operative
Tom Stephens	Senior Executive Engineer
Tom Tinsley	Senior Executive Engineer
Tommy Dowling	Chargehand/Fitter

Measuring Up

The following pages from our service indicators report give a picture of the county and the council's work in 2011

Nationwide service indicators for local authorities were introduced in 2003 and applied formally in 2004. From 2008 there are 46 local authority service indicators, including a number of new indicators, some deletions and amendments. The tables below show the 2011 results for Kildare County Council.

The indicators give a picture of how the council performed 46 of its functions. While this information is useful for citizens, government departments and for the council itself, it must be borne in mind that the indicators are not balanced between one local authority and another to take account of disparities in resources, especially in funding.

Community Participation and Co-operation	
CP 1	% of local schools and youth groups involved in the local Youth Council/Comhairle na nÓg scheme
	84% of Schools and 97% of Youth Projects

CP 2	Number of groups registered with the Community and Voluntary Forum
	610

Corporate Issues			
Sick Leave			
C 1	% of working days lost to sickness absence through:	Certified leave	Uncertified leave
		5.05%	0.66%
Staff Training			
C 2	Expenditure on training and development as a % of total payroll costs		
	4.56%		

Environmental Services							
Unaccounted For Water							
E1	Unaccounted for water (UFW) as a percentage of total volume of water supplied under the water supply schemes that the local authority is responsible for						28.9%
Drinking Water Analysis							
E2 -	A. Percentage of drinking water analyses results in compliance with statutory requirements with regard to:				Public schemes	Private schemes (where appropriate)	
					99.8%	99.3%	
Fire Service							
F1	Average time, in minutes, to mobilise fire brigades in respect of Fire			Full-time stations	Part-time stations (retained fire services)		
				N/A			
	Average time, in minutes, to mobilise fire brigades in respect of all other emergency incidents			N/A	5.99 minutes		
F2	Percentage of attendance at Scenes:	A.First attendance is at scene within 10 minutes	B.First attendance is at scene after 10 minutes but within 20 minutes	C.First attendance is at scene after 20 minutes	D. First attendance at scene within 10 minutes all other emergency incidents	E. First attendance at scene within 10 minutes but within 20 minutes	F. First attendance at scene after 20 minutes
		21.73%	59.82%	18.15%	20%	67.12%	12.88%
Fire Safety Certificates – Fire Prevention							
F3	A. Total number of fire safety certificate applications received		B. Total number of fire safety certificate applications processed		C. Total number of applications deemed invalid		
	153		168		14		
Household Segregated Waste							
E3	A.Percentage of households who receive a waste collection service and are provided with segregated waste collection for dry recyclables			B. Percentage of households who receive a waste collection service and are provided with segregated waste collection for organics			
	99.96%			47.49%			

Household Waste Sent for Recycling

E4	A. Percentage of Household Waste collected from kerbside, which is sent for recycling	B. Tonnage of household waste collected from kerbside, which is sent for recycling	C. Tonnage of household waste recycled, which arises from waste collected from recycling facilities (i.e. bring banks, civic amenity sites, transfer stations and other recycling facilities)
	27.64%	19105	5032.8

Household waste sent for Landfill:

E5	Tonnage 50,010
	Percentage : 72.36%

Recycling Facilities

E6	Total number of facilities:					
	Glass	Cans	Textiles	Batteries	Oils	Other
	43	39	64	223	2	4
E6	Total number of locations for recycling per 5000 or the population:					
	Glass	Cans	Textiles	Batteries	Oils	Other
	1.02	0.92	1.52	5.31	0.047	0.09
	Number of bring sites:					
	Glass	Cans	Textiles	Batteries	Oils	Other
	41	37	62	221	0	2
E6	Number of civic amenity sites:					
	Glass	Cans	Textiles	Batteries	Oils	Other
	2	2	2	2	2	2

Litter Wardens

E7	Total number of litter wardens:	Full-Time	Part-Time	Number of Litter Wardens (both Full-Time and Part-Time) per 5000 population
	8	1	7	0.1905

Litter Prosecutions							
E7	Number of on-the-spot fines issued	Number of prosecution cases taken because of non-payment of on-the-spot fines	Number of prosecutions secured in cases taken because of non-payment of on the spot fines	Number of on the spot fines paid	Number of notices issued (under sections 9,15,16,17 and 20 of the Litter Pollution Act 1997)	Total number of prosecutions taken(all prosecutions under the Litter Acts 1997 to 2003)	Total Number of prosecutions secured (all prosecutions under the Litter Acts 1997 to 2003)
	749	60	37	310	50	60	37
Litter Pollution							
E7	Percentage of areas within the local authority that are:	Unpolluted (litter-free)	Slightly polluted with litter	Moderately polluted (with litter)	Significantly polluted (with litter)	Grossly polluted (with litter)	
		29%	47%	24%	0%	0%	
Environmental Complaints and Enforcement							
E8	Environmental Complaints and Enforcement:	Total number of cases subject to complaints concerning environmental pollution (relating to waste, litter, water pollution, noise pollution, air-pollution)	Number of complaints investigated	Number of enforcement procedures taken	Number of complaints resolved where no further action was necessary		
		1146	1137	972	1029		
School Environmental Campaigns							
E9	Percentage of schools participating in environmental campaigns:	Primary Schools	Secondary Schools				
		87.6%	73%				

Housing

Housing Vacancies

H1	Total number of dwellings in local authority stock	Total number of dwellings, excluding those subject to major refurbishment projects	Overall % of dwellings that are empty (excluding those subject to major refurbishment schemes)	% of empty dwellings unavailable for letting	% of empty dwellings available for letting
	3576	3568	1.62%	84.48%	15.52%
H2	Average time taken to re-let dwellings available for letting (in weeks)				13.77
	Average time taken from the works (above) being completed to the date of the first rent debit				3.32
H3	Number of repairs completed as a % of the number of valid repair requests received				91.81%
H4	Total number of Traveller families accommodated as a % of the targets set in the local Traveller Accommodation Programme.				90.90%
H5	Enforcement of standards in private rented sector				
	A. Total number of registered tenancies				9652
	B. Number of dwelling units inspected				545
	C. Number of inspections carried out				694
	D. Number of dwelling units inspected as a % of registered tenancies (i.e. B as a percentage of A)				5.65%
H6	Grants to adapt housing for the needs of people with a disability				
	A. Average time taken (in weeks) to process applications under the Mobility Aids Grant Scheme, including any necessary inspection(s) , from the date of receipt of a valid application to the date of decision of the application.				1.97
	B. Average time taken (in weeks) to process applications under Housing Adaptation Grant for People with a Disability, including any necessary inspection(s), from the date of receipt of a valid application, to the date of decision on the application.				2.23
H7	Pre-Tenancy Familiarisation Courses				
	A. Total number of new local authority tenants				146
	B. Percentage of new local authority tenants, who have been offered pre-tenancy familiarisation courses				100%

Library Services					
Public Opening Hours					
L1	Average number of opening hours per week for full-time libraries	Average number of opening hours per week for part-time libraries	Percentage of full-time libraries that have lunchtime openings	Percentage of full-time libraries that have evening openings	Percentage of full-time libraries that have Saturday openings
	36.6	13.82	100%	100%	76%
Library Visits					
L2	Number of visits to full-time libraries per 1000 of the population				
	531,330				
Library Stock					
L3	A. Annual expenditure on stock per head of population	Number of items issued per head of population (county/citywide) for books		Number of items issued per head of population (county/citywide) for other items	
	2.06	2.76		0.65	
Internet access					
L4	Number of internet sessions provided per 1,000 population				
	228				

Motor Tax					
M1	Number and % of motor tax transactions which are dealt with:	Over the counter	Are dealt with by post	Number that are dealt with in other ways (e.g. on-line or phone)	
		40.7%	6.99%	52.92	
M2	Number of postal applications which are dealt with (i.e. disc/driver licence issued) from receipt of the application:	On the same day	On the third day or less	On the fifth day or less	Over five days
		6686	6667	1624	2114
M2	% of overall postal applications which are dealt with (i.e. disc/driver licence issued) from receipt of the application:	On the same day	On the third day or less	On the fifth day or less	Over five days
		39.12	39.01	9.50	12.37

M3	Time Taken to Process Driving Licence Applications			
	A.Number of Driving Licence Applications which are dealt with on the same day as receipt of the applications	B. Number of Driving Licence Applications which are dealt with on the second or third day from receipt of application	C. Number of Driving Licence Applications which are dealt with on the fourth or fifth day from receipt of application	D. Number of Driving Licence Applications which are dealt with on the same day as receipt of application
	715	2091	390	24008
	E.Percentage of overall Driving Licence applications which are dealt with on the same day as receipt of application	F. Percentage of overall Driving Licence applications which are dealt with on the second or third day from receipt of application	G. Percentage of overall Driving Licence applications which are dealt with on the fourth or fifth day from receipt of application	H. Percentage of overall Driving Licence applications which are dealt with in over five days from receipt of the application
	2.63%	7.69%	1.43%	88.25%
M4	Average Number of Opening Hours Per Week		28.2	

Planning and Building Control

Planning Applications

P1 A	Number of applications decided:	Individual House	Housing Development	Other not requiring an EIA	Other requiring an EIA
		218	12	779	11
P1 B	Number of decisions decided within 8 weeks	Individual House	Housing Development	Other not requiring an EIA	Other requiring an EIA
		86	2	416	3
P1 C	Number of decisions which required the submission of further information	Individual House	Housing Development	Other not requiring an EIA	Other requiring an EIA
		132	10	353	8
P1 D	Number of decisions where an extension of time was agreed to by the applicant, under section 34(9) of the Planning and Development Act 2000	Individual House	Housing Development	Other not requiring an EIA	Other requiring an EIA
		0	0	0	0
P1 E	Average length of time (in days) taken to determine an application where further information is sought (days):	Individual House	Housing Development	Other not requiring an EIA	Other requiring an EIA
		76	82	80	59
P1 F	% of Granted	Individual House	Housing Development	Other not requiring an EIA	Other requiring an EIA
		59.63%	75%	77%	91%
P1 G	% of Refusals	Individual House	Housing Development	Other not requiring an EIA	Other requiring an EIA
		40.37%	25%	23%	9%
P1 H	% of cases where the decision was confirmed with or without variations, by An Bord Pleanála	Individual House	Housing Development	Other not requiring an EIA	Other requiring an EIA
		70%	100%	85%	100%
P1 I	% of cases where the decision was reversed by An Bord Pleanála	Individual House	Housing Development	Other not requiring an EIA	Other requiring an EIA
		30%	0%	15%	0%

Planning Enforcement						
P2	A.Total number of cases subject to complaints that were investigated	B.Total number of cases subject to complaints that were dismissed	C.Number of enforcement procedures taken through negotiations	D.Number of enforcement procedures taken through warning letters	E.Number of enforcement procedures taken through enforcement	F. Number of prosecutions
	252	53	51	163	53	22
Planning Public Opening Hours						
P3	Public opening hours - Average number of opening hours per week					
	34.3					
Pre-Planning Consultation						
P4	A.Number of pre-planning consultation meetings held					
	209					
P4B	Average length of time (in days) from the request for consultation with local authority planner to actual formal meeting for pre-planning consultation.					14.7
Planning – New Buildings Inspected						
P5	Building inspected as a % of new buildings notified to the local authority					35%
Taking Estates in Charge						
P6	A. The number of residential estates for which the planning permission has expired, in respect of which formal written requests for taking in charge (from residents or developers) were on hands at the beginning:					36
	B. The number of estates that were taken in charge in the year in question:					17
	C. Number of dwellings in respect of column B					778
	D. Percentage of estates in column A not completed to the satisfaction of the planning authority in line with the planning permission					11
	E.Number of estates in column D in respect of which enforcement action was taken in the year in question and/or the bond was called in					1
	F. Number of estates in Column D in respect of which works were undertaken by the authority to bring the estate to taking in charge standard					0

Recreational Services			
Children's Playgrounds			
Rec 1	Number of children's playgrounds:	directly provided by the local authority	facilitated by the local authority
		10	1
Swimming Pools			
Rec 1	Number of visitors to local authority facilitated leisure facilities		
	926040		

Revenue					
Housing Rent					
Rev 1	Amount collected at year end as a percentage of amount due	% of arrears less than 4 weeks	% of arrears less than 4-6 weeks	% of arrears less than 6-12 weeks	% of arrears more than 12 weeks
	81.80%	2.96%	3.14%	4.97%	88.93%
Housing Loans					
Rev 2	Amount collected at year end as a % of amount due	% of arrears less than 1 month	% of arrears that are 1 month old or more, but less than 2 months old	% of arrears that are 2 months old or more, but less than 3 months old	% of arrears that are 3 months old or more
	56.68%	1.78%	0.93%	1.12%	96.17%
Commercial Rates					
Rev 3	Amount collected at year end as a % of amount due from Commercial Rates				
	77.21%				
Refuse Charges					
Rev 4	% of households paying refuse charges (including waivers) at year end				
	93.13%				
Non-domestic water charges					
Rev 5	Amount collected at year end as a % of amount due for Non-Domestic Water Charges				
	58.28%				

Roads**Road Restoration Programme**

R 1	A. The number of kilometres of local and regional roads improved and maintained under the Restoration Programme per annum	B. The number of kilometres of local and regional roads constructed under the specific improvements grants scheme per annum
	72.345	51.035

Conferences 2011

Conference Title	Location	Date	Cost	Number of Delegates
The Role of Irish Institutions and Law Reform	Thomand Park Limerick	28 and 29 January 2011	€418.68	1
AMAI Spring Conference	Westlodge Hotel Bantry Co Cork	11 and 12 February 2011	€621.94	1
Carlow Tourism Conference	Seven Oaks Hotel Carlow	3 to 5 March 2011	€295.12	1
STEM Conference	Tullamore Court Hotel Tullamore Co Offaly	10 March 2011	€218.78	2
The Local Government Planning Service	Silver Tassie Hotel Letterkenny Co Donegal	11 to 13 March 2011	€551.20	1

Equal Status Legislation	Westport Plaza hotel Westport Co Mayo	18 to 20 March 2011	€525.54	1
Association of County and City Councils	Tullamore Court Hotel Tullamore Co Offaly	24 and 25 March 2011	€0.00	1
Changing Trends In Drug Abuse	Silver Tassie Hotel Letterkenny Co Donegal	25 to 27 March 2011	€569.66	1
20 th Annual Kerry Environmental Conference	The Meadowlands Hotel Tralee Co Kerry	7 to 10 April 2011	€1151.26	2
LAMA Spring Conference, "Economic Revival a Role for Local Government"	Fairways Hotel Dundalk Co Louth	29 and 30 April 2011	€693.74	3

Irish Planning Institute Planning Conference 2011	Radisson Blue Hotel Galway	5 and 6 May 2011	€292.30	1
Renewable Energy Local Government Can Make a Difference	Mill Park Hotel Donegal	3 to 5 June 2011	€527.44	1
Indemnity from Liability of Decisions of the Corporate Body	The Kingsvally Hotel Galway	10 to 12 June 2011	€424.38	1
EU Funding and Functions	Celtic Ross Hotel Roscarbery Co Cork	17 to 19 June 2011	€605.28	1
MacGill Summer School, "Transforming Ireland 2011 to 2016"	The Highlands Hotel Glenties Co Donegal	24 to 29 July 2011	€3644.92	5
Parnell Summer School "Equality Then and Now"	Rathdrum Co Wicklow	14 to 19 August 2011	€1,782.19	3

LAMA Autumn Conference, " The Role of Tourism in Economic Recovery"	Clonea Strand Hotel Dungarvan Co Waterford	23 and 24 September 2011	€2,597.34	5
Clare Tourism, " Tourism The Potential for Economic Growth"	Falls Hotel Ennistymon Co Clare	25 and 26 November 2011	€1,236.89	4
Health and Safety and The Councillor	Clonmel Park Hotel Clonmel Co Tipperary	9 and 10 December 2011	€267.32	1

FINANCIAL STATEMENT

Year ended 31 December 2011

(with comparative revenue account figures for previous years)

REVENUE ACCOUNT

Expenditure	2011	2010	2009	2008
	€	€	€	€
Housing and Building	22,375,627	19,168,637	17,477,789	24,034,092
Road Transportation and Safety	27,914,562	28,980,073	28,025,312	33,689,241
Water Supply and Sewerage	23,673,594	25,789,418	27,409,154	26,649,792
Development Incentives and Controls	8,680,129	9,025,113	10,902,049	12,280,863
Environmental Protection	32,750,134	26,067,527	24,388,617	26,144,240
Recreation and Amenity	8,246,631	8,201,211	8,374,092	9,197,433
Agriculture and Education	13,642,277	13,313,628	11,732,699	10,179,094
Miscellaneous Services	6,960,813	8,425,173	8,604,449	6,178,969
Total	144,243,767	138,970,780	136,914,161	148,353,724

Receipts (Grants, Goods and Services)

Housing and Building	20,419,668	17,091,974	15,430,394	17,733,553
Road Transportation and Safety	13,880,457	14,197,721	12,460,058	16,812,689
Water Supply and Sewerage	12,353,255	14,735,412	16,828,457	15,196,356
Development Incentives and Controls	1,306,399	1,776,645	2,701,802	4,249,035
Environmental Protection	21,252,249	16,193,242	12,672,530	15,436,947
Recreation and Amenity	1,387,880	1,325,077	757,152	1,311,827
Agriculture and Education	12,679,258	12,026,516	10,946,502	8,755,946
Miscellaneous Services	4,239,618	3,868,292	4,610,198	2,051,860
Sub-Total	87,518,784	81,214,879	76,407,093	81,548,213
Urban Authority Accounts	2,852,094	2,647,313	2,802,175	3,177,038
Pension Related Deductions	2,268,787	2,319,302	1,887,497	
Local Government Fund	21,604,877	22,458,849	23,866,930	28,176,862
County Rates	36,235,752	38,359,818	38,904,433	38,784,510
Total	150,480,294	147,000,161	143,868,128	151,686,623
Transfers to/from Reserves	-5,321,720	-7,056,892	-6,186,166	-2,523,002
Surplus/Deficit for year	914,809	972,489	767,801	809,897
Opening Balance	-3,913,254	-4,885,743	-5,653,544	-6,463,441
Closing Balance	-2,998,445	-3,913,254	-4,885,743	-5,653,544

CAPITAL INVESTMENT	2011	2010	2009	2008
	€	€	€	€
Housing and Building	14,641,512	21,752,117	40,496,309	69,966,084
Road Transportation and Safety	26,371,931	58,673,742	112,681,176	142,124,445
Water Supply and Sewerage	20,339,215	14,927,863	26,068,719	16,954,391
Development Incentives and Controls	15,293,521	7,943,162	1,037,884	4,287,189
Environmental Protection	831,287	618,163	1,494,164	4,283,469
Recreation and Amenity	921,476	1,883,062	4,746,281	2,973,075
Agriculture and Education	0	13,098	321,662	149,334
Miscellaneous Services	6,794,682	394,284	561,182	8,356,209
Total	85,193,624	106,205,491	187,407,377	249,094,196



NAAS TOWN COUNCIL ***Comhairle Baile Nás Na Ríogh***



Annual Report 2011 ***Tuarascáil Bhliantúil 2011***

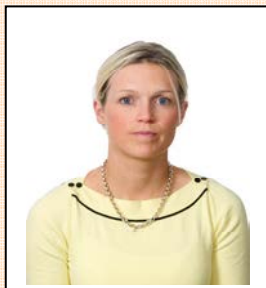
INTRODUCTION

The current council of nine elected members was elected in June 2009 and is currently serving a term of five years.

Cllr. Darren Scully served as Mayor to November 2011. Cllr. Willie Callaghan was elected Mayor at the December monthly meeting and Cllr. Emer McDaid was elected Deputy Mayor. They will serve in those positions until the next Annual Meeting in June 2012.



Cllr Willie Callaghan
Fianna Fáil



Cllr Emer Mc Daid
Fine Gael

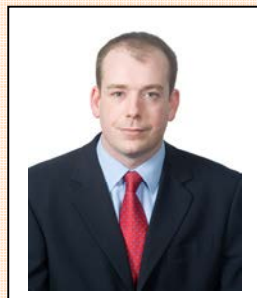


Cllr Seamie Moore
Independent

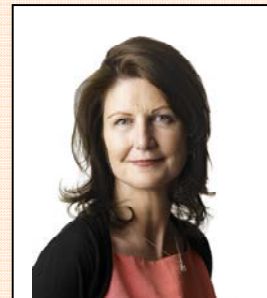


Cllr Pat Clear
Independent

Councillors Callaghan, Scully and Moore are also members of Kildare County Council. The members are also represented on a number of local community groups as well as the County Council Strategic Policy Committees.



Cllr Darren Scully
Fine Gael



Cllr Rioghnagh
Bracken
Independent



Cllr Anne Breen
Labour



Cllr Alan O Kelly
Fine Gael

The Town Manager is Eamonn O'Sullivan, The Town Clerk is Ken Kavanagh and the Town Engineer is David Reel.



Cllr Ger Dunne
Labour

The Naas Town Council Members meet on the third Tuesday of the month in the Naas Town Hall to decide policy and conduct the business of the council. The meetings are open to the public and press. Details of the agendas and minutes of the council meetings can be accessed on the Naas Town Council website. www.naastowncouncil.ie

2011 was another very difficult and challenging year for the council. The national economic downturn has added pressure on the council's own income sources and funding from the Local Government Fund has also decreased over the last couple of years. This year's budget provides for a total expenditure of €12,622,854 and income of €3,255,225. The budgeted allocation from the Local Government Fund is €1,123,654 leaving a balance of €7,941,754 to be levied from commercial rates after the provision for credit balance is applied. This amount requires an annual rate on valuation of 67.41, which maintains the 2011 figure.

The Capital Programme report for the three year period 2011-2013 was noted by the members at the February monthly meeting. Proposed expenditure was estimated at €19.1m, however €10.2m would be carried out on foot of planning permissions and would not be incurred by the council.

Naas Town Development Plan

The Naas Town Development Plan 2011-2017 was adopted on 9 May 2011 and became effective on 6 June 2011. The six year plan sets out the Town Council's overall strategy for the proper planning and sustainable development of Naas together with policies and objectives for the future development of the town for the period 2011-2017.

Development Management - Planning Applications

The total number of planning applications dealt with over the past six years by the planning department is outlined in the following table;

Year	Naas
2005	194
2006	253
2007	222
2008	169
2009	98
2010	81
2011	95

Projects

Universal Access Naas Town Hall



The original façade of the Town Hall was established in 1904 and while there have been a number of renovations carried out over the years, the most notable project, the Universal Access at the Naas Town Hall, was completed in 2011.

The Town Hall is used by a number of community groups and with the new enhanced entrance the Town Hall is now accessible to all users. The project consisted of extensive renovations to the front of the building which cost in the region of €250,000. The members of the Town Council had set aside funding for a number of years to ensure that the project could be completed.

