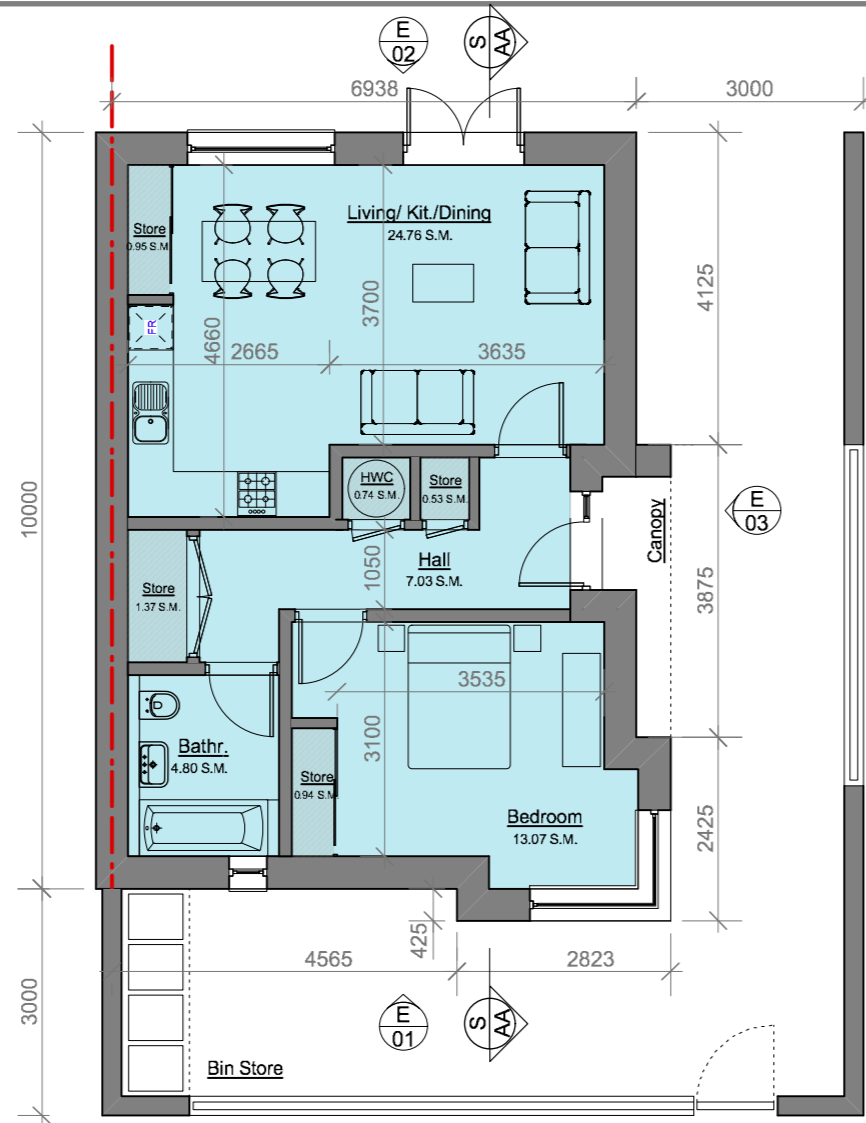
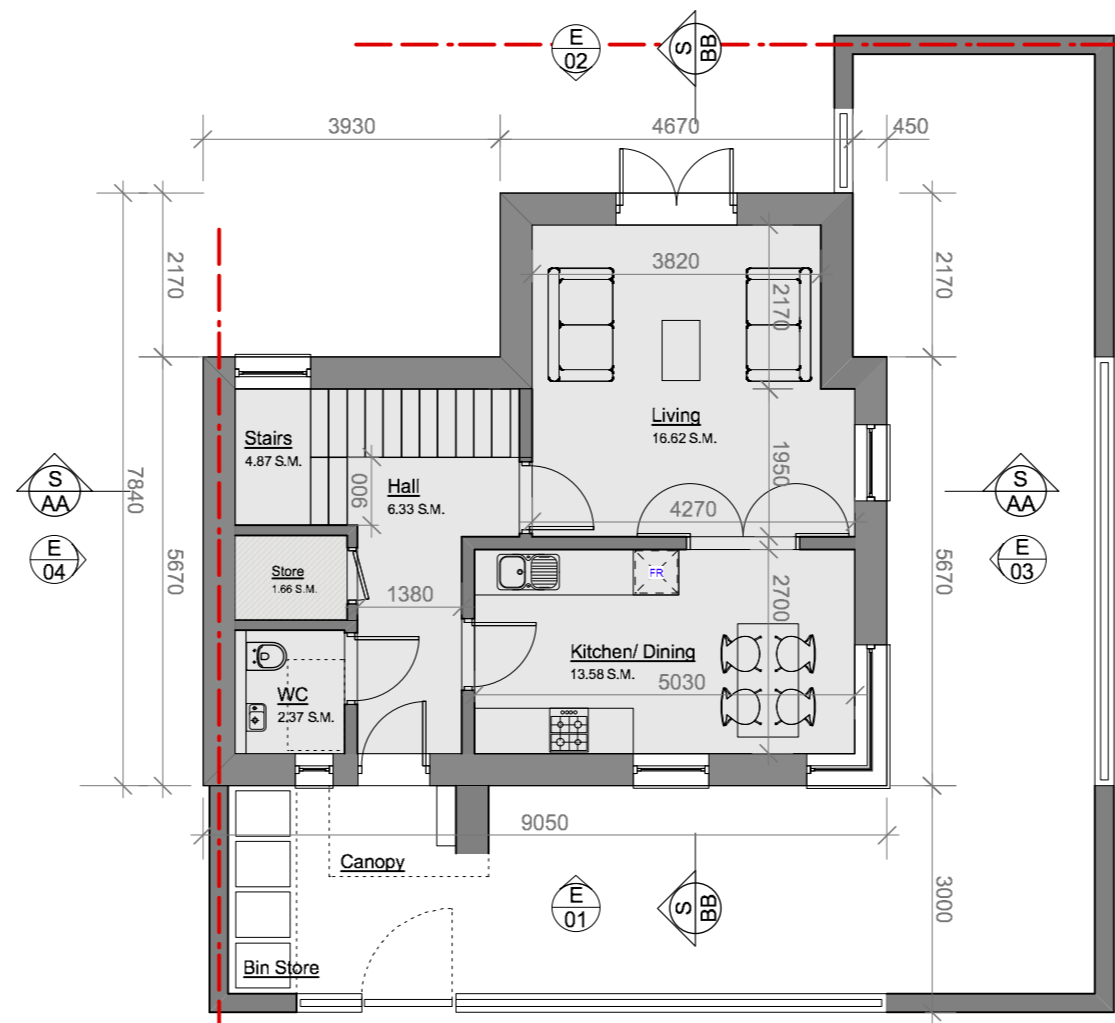


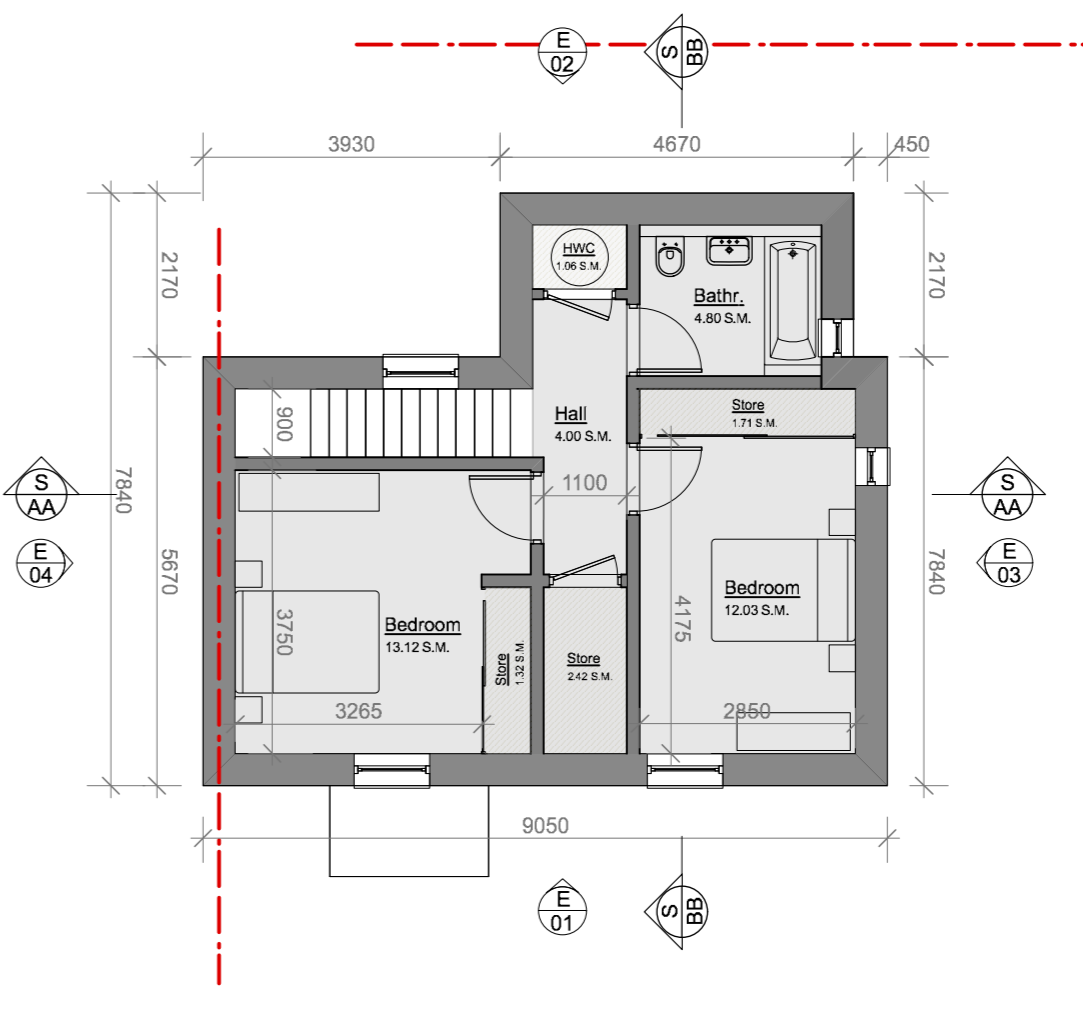
1B / 2P Terraced House - Block E / S
Ground Floor Plan
Front Entry



1B / 2P Terraced House - Block E / S
Ground Floor Plan
Side Entry



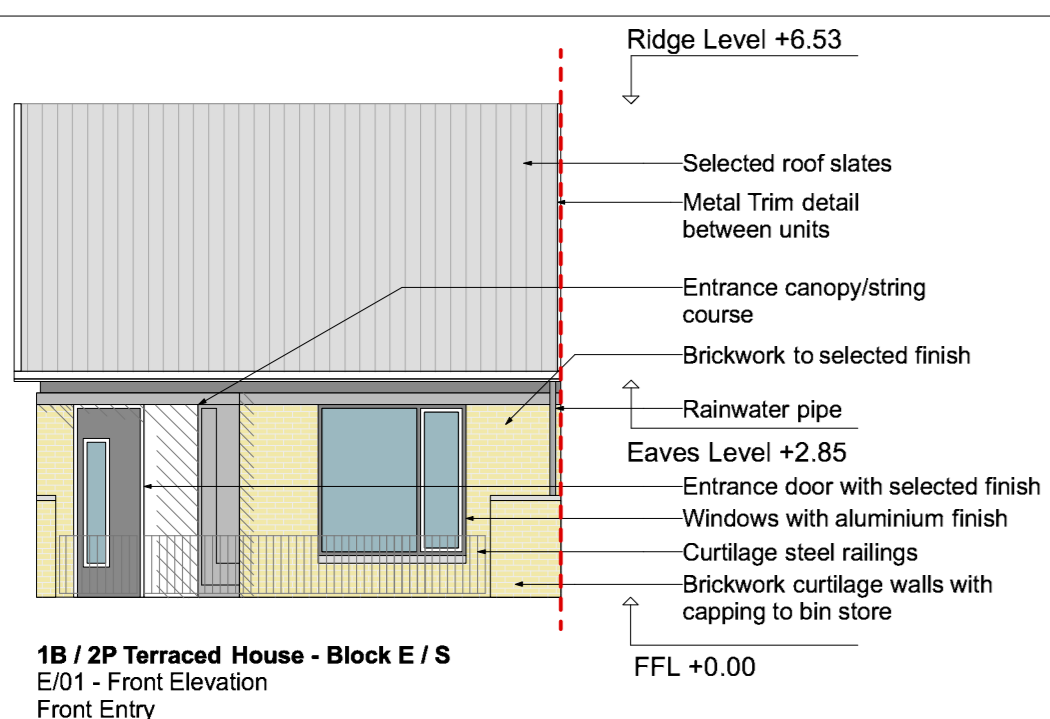
2B / 4P Corner House - Block E / S
Ground Floor Plan



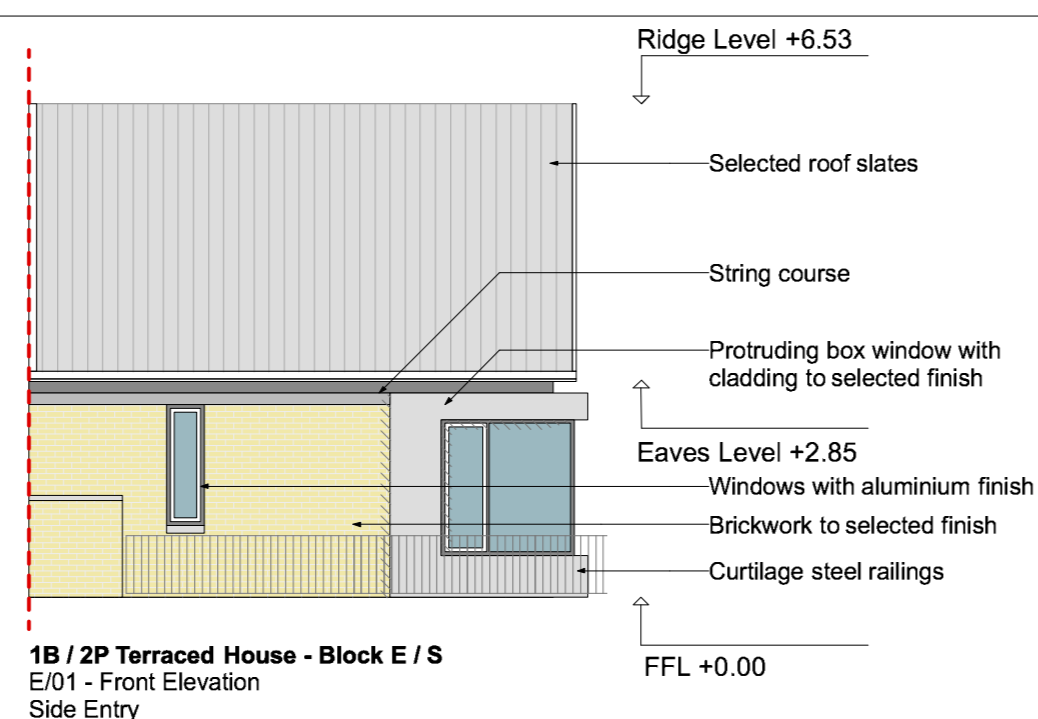
2B / 4P Corner House - Block E / S
First Floor Plan

Floor Plans

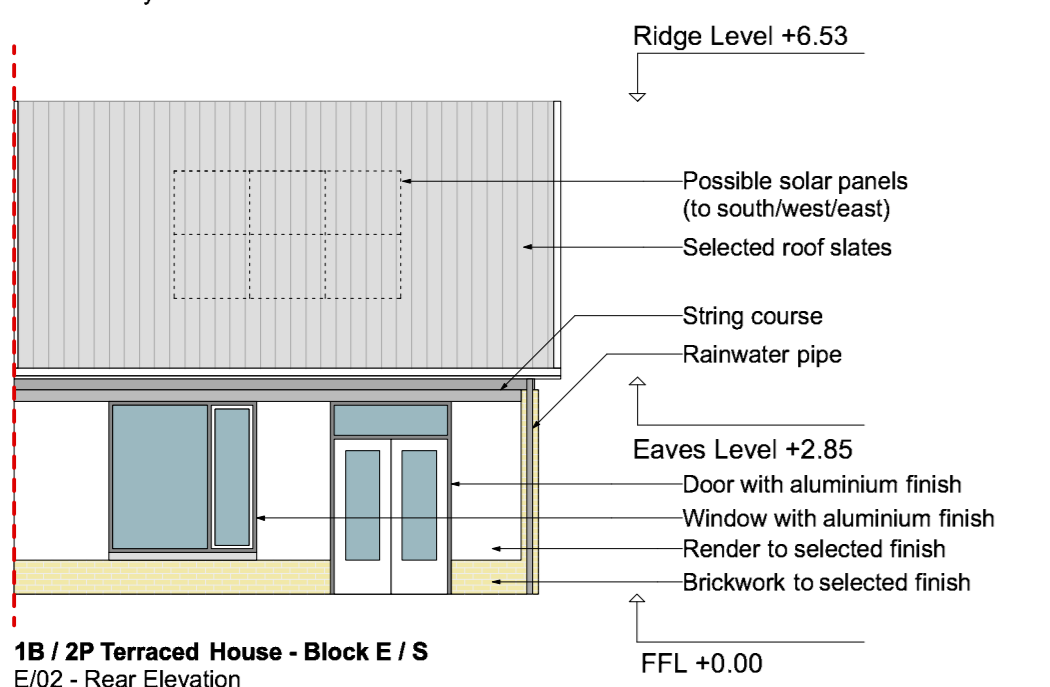
Floor Plans



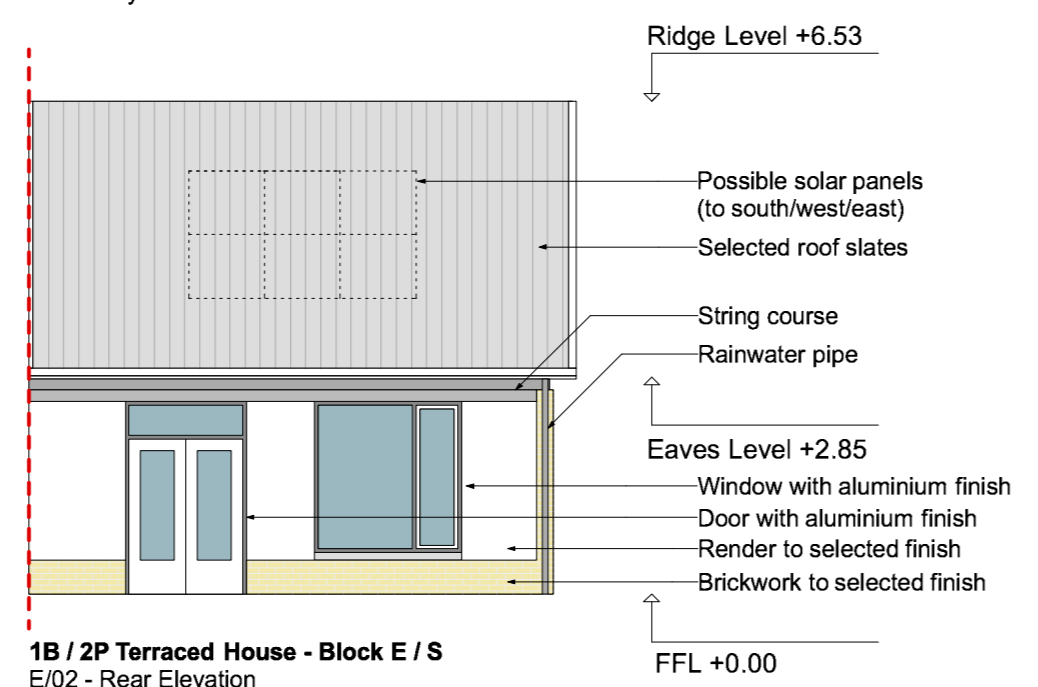
1B / 2P Terraced House - Block E / S
E/01 - Front Elevation



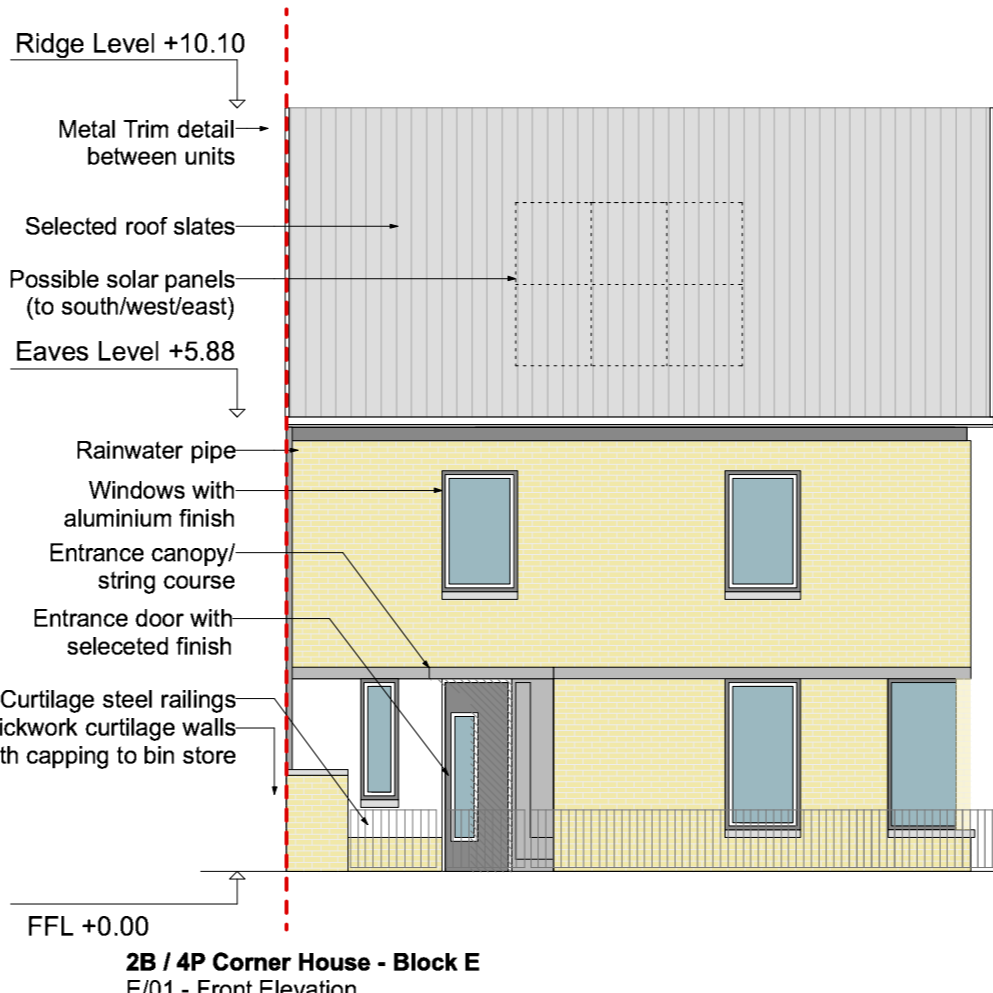
1B / 2P Terraced House - Block E / S
E/01 - Side Elevation



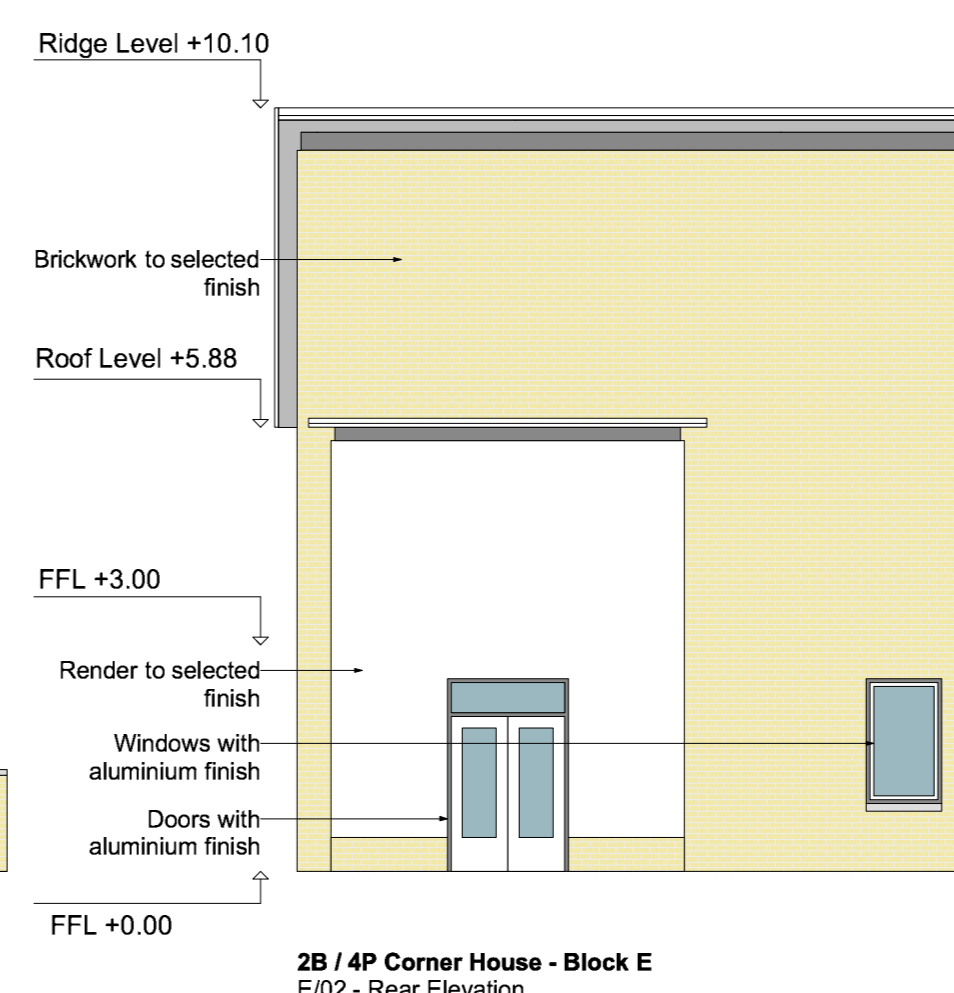
1B / 2P Terraced House - Block E / S
E/02 - Rear Elevation



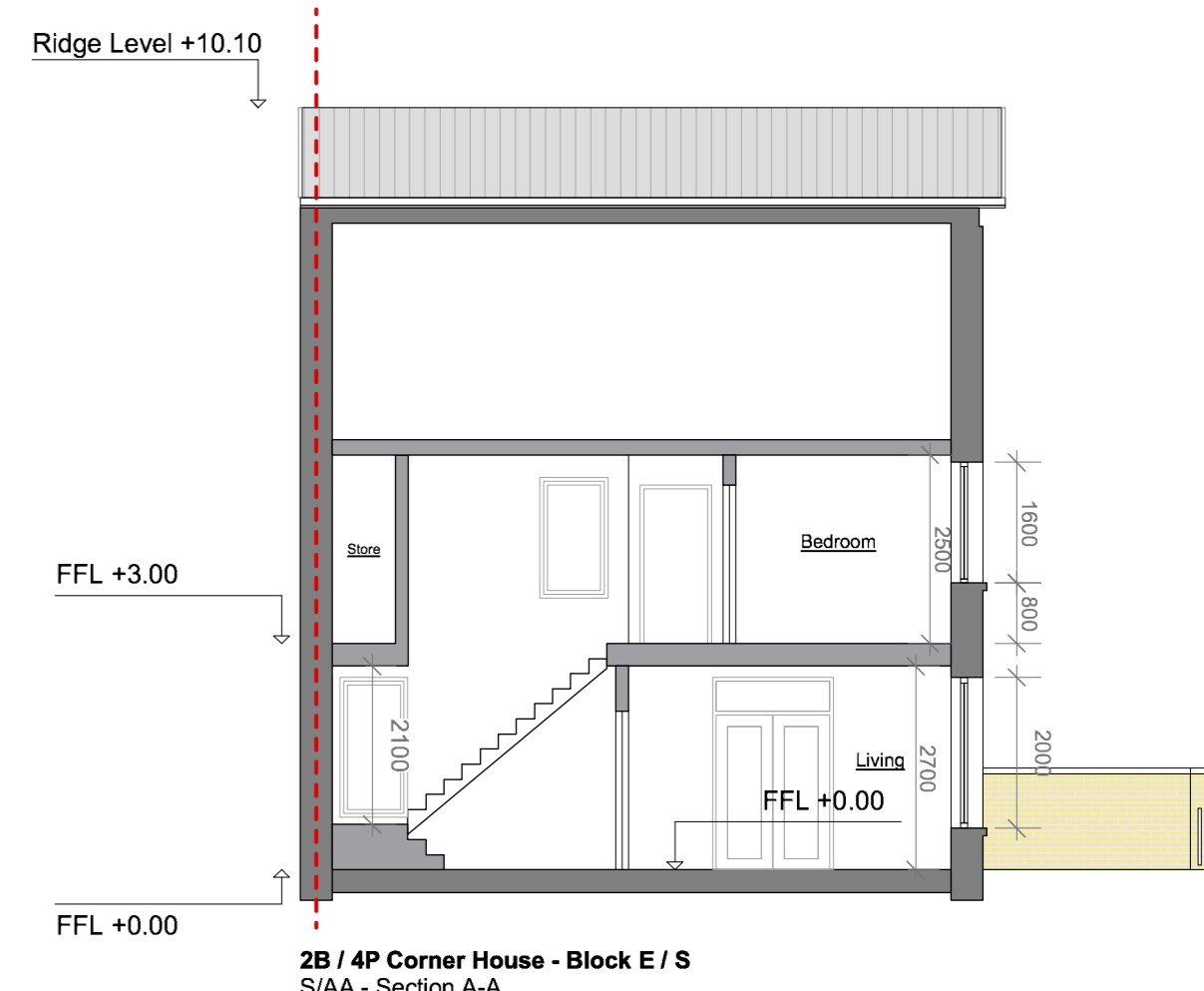
1B / 2P Terraced House - Block E / S
E/02 - Rear Elevation



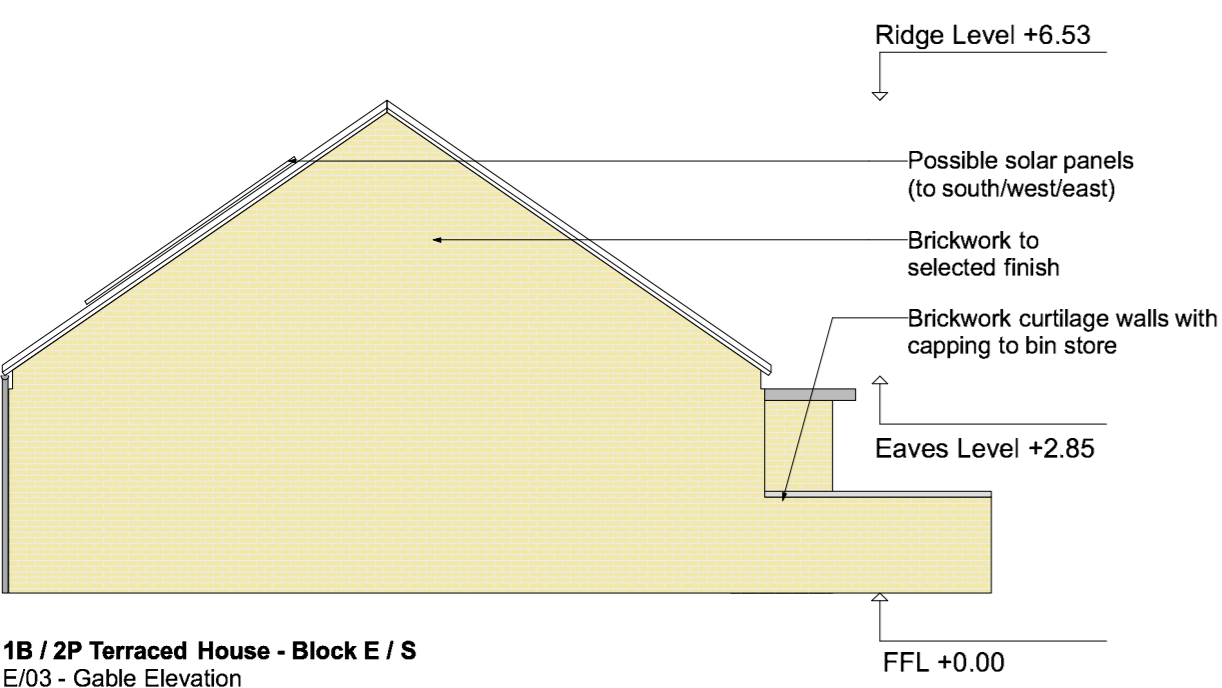
2B / 4P Corner House - Block E
E/01 - Front Elevation



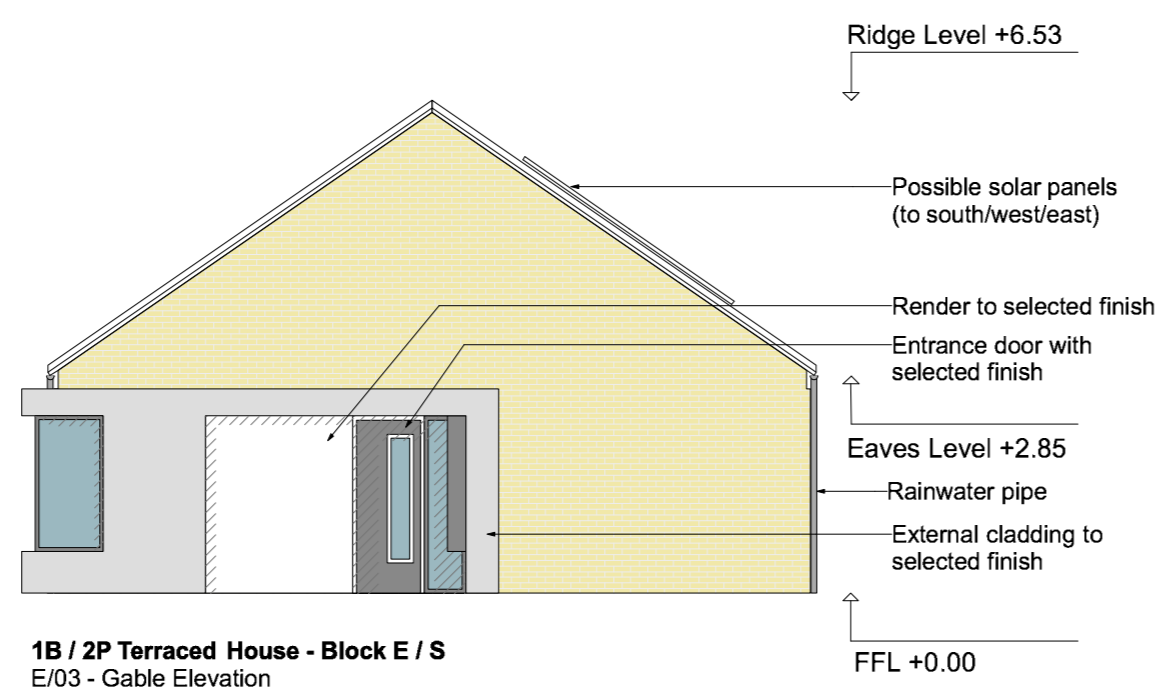
2B / 4P Corner House - Block E
E/02 - Rear Elevation



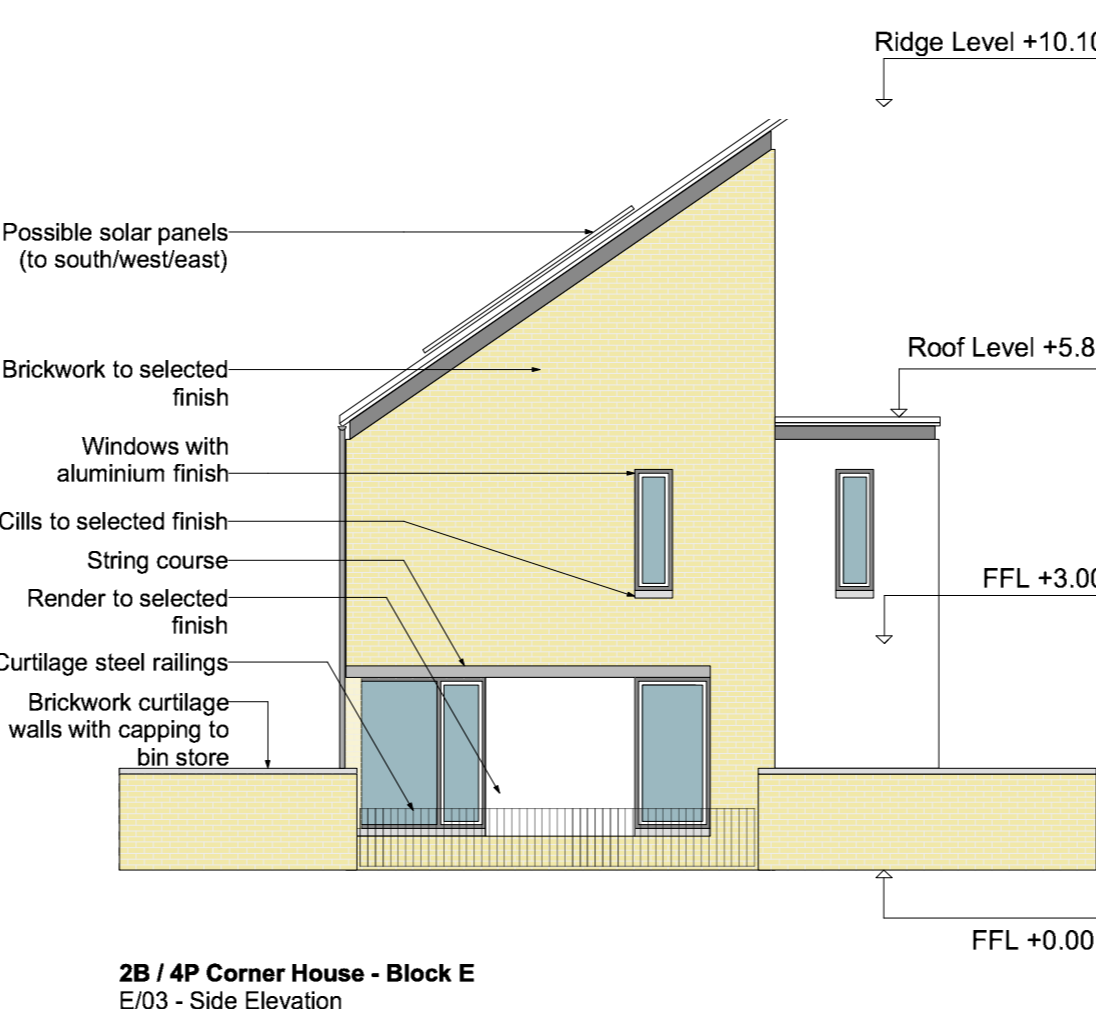
2B / 4P Corner House - Block E / S
S/A-A - Section A-A



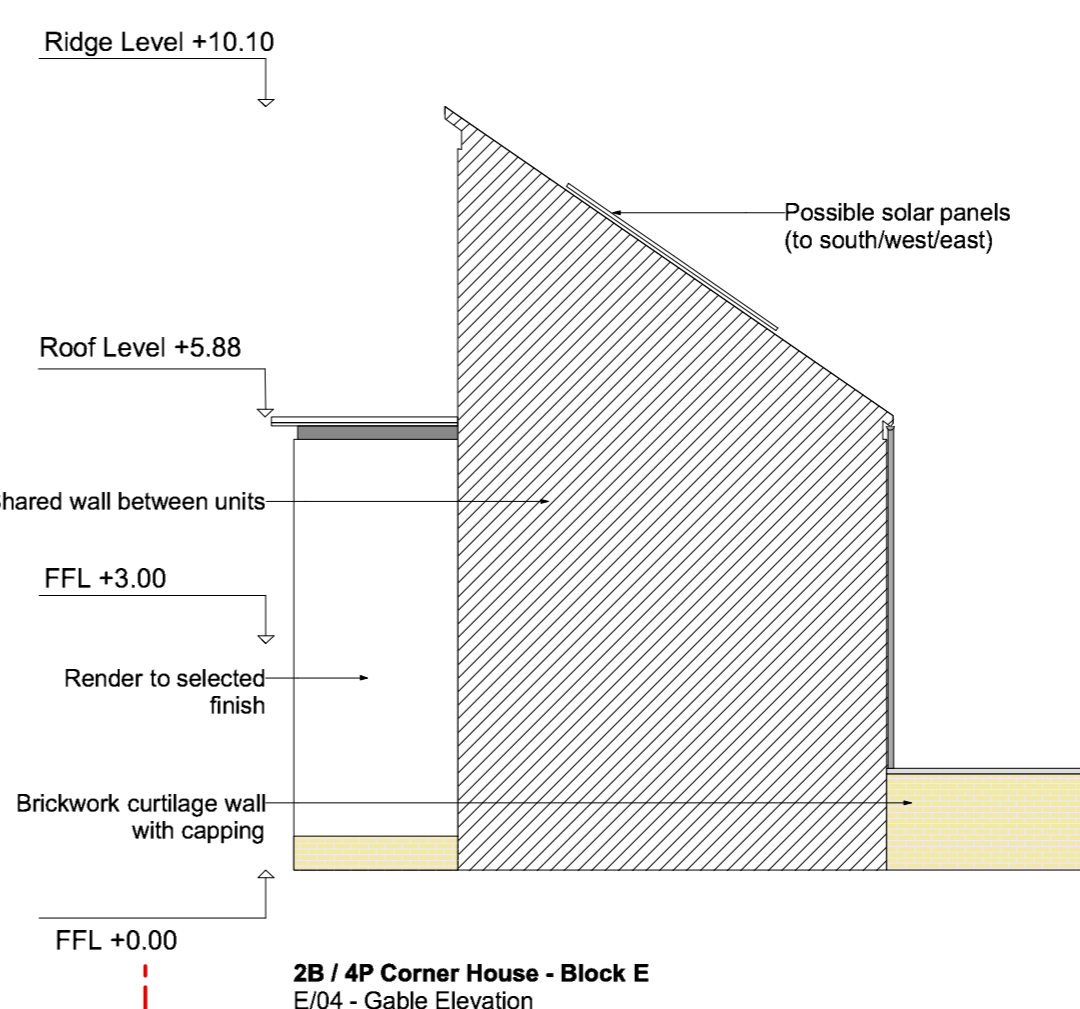
1B / 2P Terraced House - Block E / S
E/03 - Gable Elevation



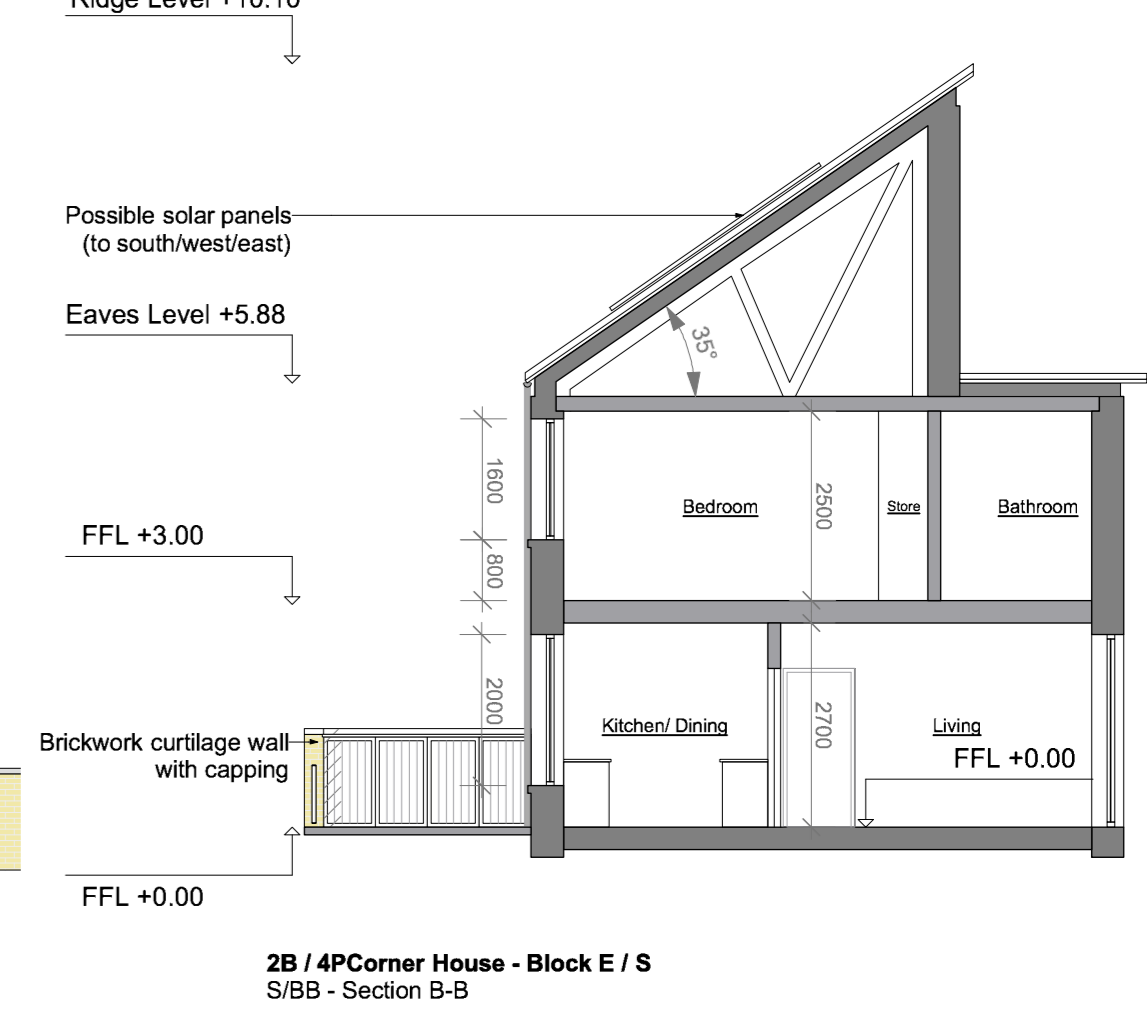
1B / 2P Terraced House - Block E / S
E/03 - Side Elevation



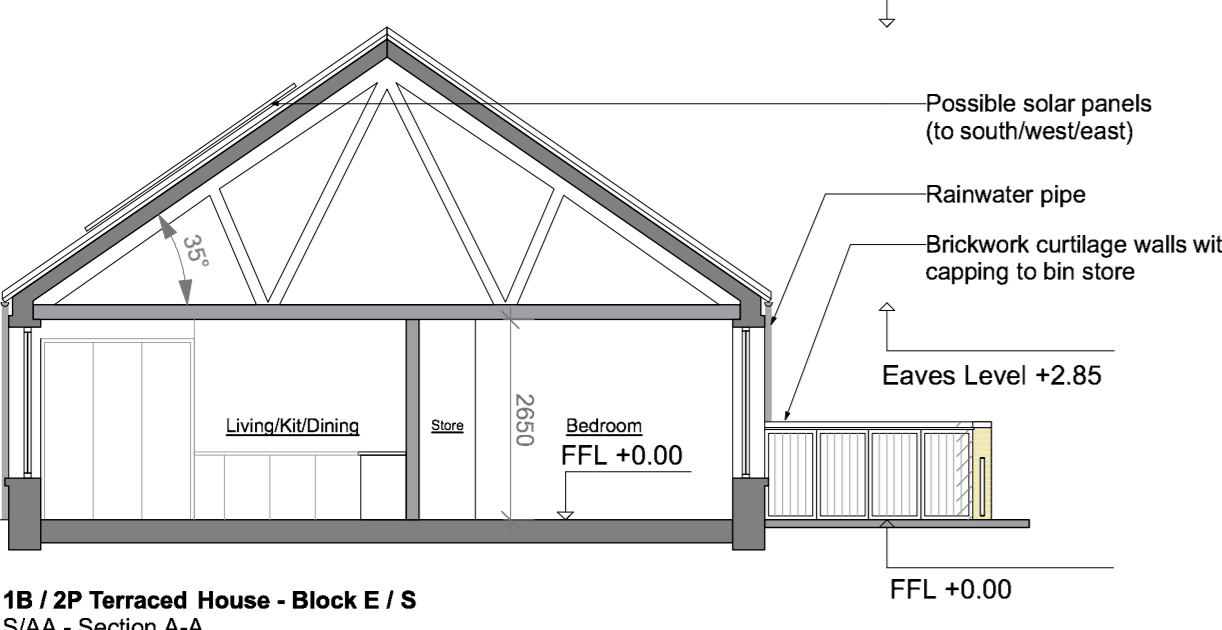
2B / 4P Corner House - Block E
E/03 - Side Elevation



2B / 4P Corner House - Block E
E/04 - Gable Elevation



2B / 4P Corner House - Block E / S
S/B-B - Section B-B



1B / 2P Terraced House - Block E / S
S/A-A - Section A-A

Elevations / Sections

Elevations / Sections



Unit Allocation

For further information on planning, screening and social infrastructure please refer to planning documentation, prepared by HRA Planning.

For further information on soft landscaping please refer to landscape design plan, prepared by Mitchell+Associates.

For further information on road engineering and drainage please refer to engineering documentation, prepared by Malone O'Regan.

For further information on mechanical and engineering, including CCTV, please refer to M+E documentation, prepared by Sempie McKillop.

For further information on ecological impact assessment please refer to ecological documentation, prepared by NMEcology.

For further information on architectural design and details please refer to the architectural design statement, prepared by SHA.

Allocation of all individual building types and their orientation to North is indicated on sheet 326/NAN/031

Used for information only. Do not use drawings. Read in conjunction with specification and contract documents. Responsibility for design is shared between architect and client. Check all dimensions on site. This drawing is the copyright of Seán Harrington Architects and may not be reproduced, in whole or in part, without permission.

REV	NOTES	DATE

SEÁN HARRINGTON ARCHITECTS

3rd Floor, 20/22 Canal Street, Dublin 1, Ireland

1-01-6753-422

Residential Development at Nancy's Lane, Clane, Wick

Client: Kildare County Council

Project Name: 1-Bed / 2-Bed Houses

Project Stage: Planning

Scale: 1:100

Date: Feb 2018

Drawn: odp

Checked: sh

326-CLA-PL-021